

BUSCO-NINE DEPARTURE

AL-321 [USAF]

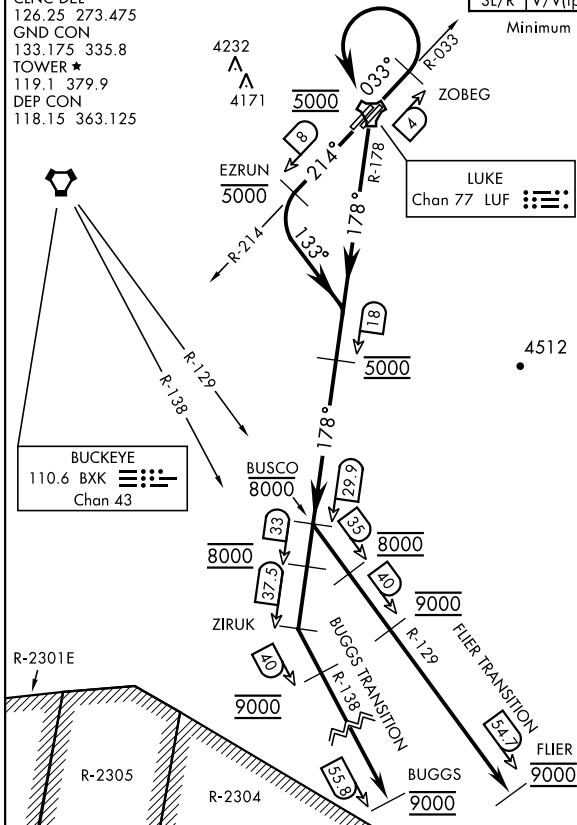
LUKE AFB (KLUF)

GLENDALE, ARIZONA

ATIS ★134.925 269.9
 CLNC DEL
 126.25 273.475
 GND CON
 133.175 335.8
 TOWER ★
 119.1 379.9
 DEP CON
 118.15 363.125

Rwy	Knots	60	120	180	240	300	360
3L/R	V/V(fpm)	370	740	1110	1480	1850	2220

Minimum Climb Rate to 5000. Controlling obstacle 4171



CAUTION: Aircraft exiting BUGGS at 8000.

DEPARTURE ROUTE DESCRIPTION

TAKEOFF RWY 3L/R: Climb on heading 033° to 5000. Abeam ZOBEG turn left direct LUF TACAN. Cross LUF at 5000 and proceed outbound via LUF R-178 to BUSCO. Cross LUF 18 DME at 5000. Cross BUSCO at or below 8000 or as instructed by ATC thence via assigned route/transition.

TAKEOFF RWY 21L/R: Climb on heading 214° to 5000. Abeam EZRUN turn left heading 133° to intercept LUF TACAN R-178 and proceed outbound to BUSCO. Cross abeam EZRUN at or below 5000, cross LUF 18 DME at 5000. Cross BUSCO at or below 8000 or as instructed by ATC thence via assigned route/transition.

BUGGS TRANSITION (BUSCO9•BUGGS): Proceed via LUF R-178 to ZIRUK. Intercept and proceed via BXX VORTAC R-138 to BUGGS. Cross LUF R-178/33 DME at 8000, cross BXX R-138/40 DME at 9000. Maintain 9000 until Buggs or as assigned by ATC.
 CAUTION: Aircraft exiting BUGGS at 8000.

FLIER TRANSITION (BUSCO9•FLIER): Intercept and proceed via the BXX VORTAC R-129 to 54.7 DME (FLIER). Cross BXX 35 DME at 8000, cross BXX 40 DME at 9000, cross FLIER at and maintain 9000 (or as assigned by ATC).

BUSCO-NINE DEPARTURE

Amdt 1 14JUL22

GLENDALE, ARIZONA

LUKE AFB (KLUF)

SW-4, 23 MAR 2023 to 20 APR 2023

SW-4, 23 MAR 2023 to 20 APR 2023