

JIIIMS THREE ARRIVAL (RNAV)

PHILADELPHIA, PENNSYLVANIA

NE-4, 23 MAR 2023 to 20 APR 2023

PHILADELPHIA APP CON
133.875 317.55
ILG ATIS 123.95
MGS AWOS-3 126.25
PHL D-ATIS ARR 133.4
PNE ATIS 121.15
TTN ATIS 126.775

NOTE: CAUTION: Parachute Jumping 3.3 NM NE BEELZ, 1.5 NM radius Cross Keys Airport, AOB 13,500 (SR-SS).

NOTE: DME/DME/IRU or GPS required.

NOTE: RNAV 1.

NOTE: For turbojets only.

NOTE: Radar required.

CHESTER COUNTY
G.O. CARLSON

TRENTON
MERCER

NORTHEAST
PHILADELPHIA

WOJIK
Landing PHL:
190K.

PHILADELPHIA
INTL

CHEAZ
190K

NEW
CASTLE

STAYK
352°
266°
(8)

RANSM
317°
(10)

CHEAZ
190K

BEELZ
300°
339°
(9)

PSOUT
087°
(7)

IROKT
Landing PHL and ILG:
Expect 9000.

BRIGS
Expect 14000.

3000
312°
(3)

4000
283°
(10)

288°
3000
(16)

4000
283°
(10)

4000
283°
(10)

4000
283°
(10)

4000
283°
(10)

4000
283°
(10)

4000
283°
(10)

4000
283°
(10)

4000
283°
(10)

4000
283°
(10)

4000
283°
(10)

4000
283°
(10)

4000
283°
(10)

ARRIVAL ROUTE DESCRIPTION

BRIGS TRANSITION (BRIGS.JIIMS3):
DASHA TRANSITION (DASHA.JIIMS3):
SNOW HILL TRANSITION (SWL.JIIMS3):

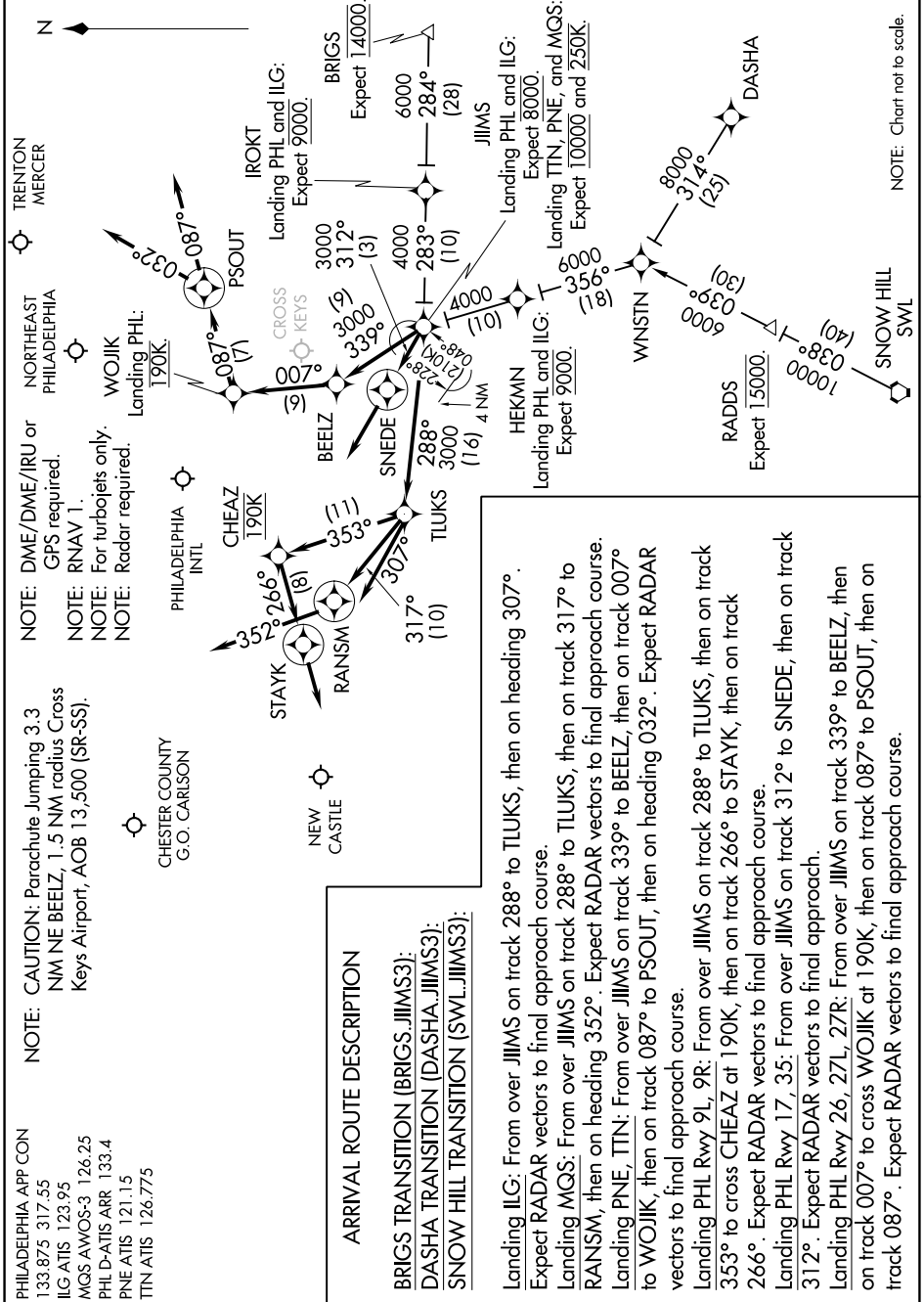
Landing ILG: From over JIIIMS on track 288° to TLUKS, then on heading 307°. Expect RADAR vectors to final approach course.

Landing MGS: From over JIIIMS on track 288° to TLUKS, then on track 317° to RANSM, then on heading 352°. Expect RADAR vectors to final approach course. Landing PNE, TTN: From over JIIIMS on track 339° to BEELZ, then on track 007° to WOJIK, then on track 087° to PSOUT, then on heading 032°. Expect RADAR vectors to final approach course.

Landing PHL Rwy 9L, 9R: From over JIIIMS on track 288° to TLUKS, then on track 353° to cross CHEAZ at 190K, then on track 266° to STAYK, then on track 266°. Expect RADAR vectors to final approach course.

Landing PHL Rwy 17, 35: From over JIIIMS on track 312° to SNEDE, then on track 312°. Expect RADAR vectors to final approach.

Landing PHL Rwy 26, 27L, 27R: From over JIIIMS on track 339° to BEELZ, then on track 007° to cross WOJIK at 190K, then on track 087° to PSOUT, then on track 087°. Expect RADAR vectors to final approach course.



NOTE: Chart not to scale.

JIIIMS THREE ARRIVAL (RNAV)

PHILADELPHIA, PENNSYLVANIA

NE-4, 23 MAR 2023 to 20 APR 2023