

VORTAC PMD <b>114.5</b> Chan <b>92</b>	APP CRS <b>265°</b>	Rwy ldg TDZE Apt Elev <b>12002</b> <b>2503</b> <b>2543</b>
--	------------------------	---

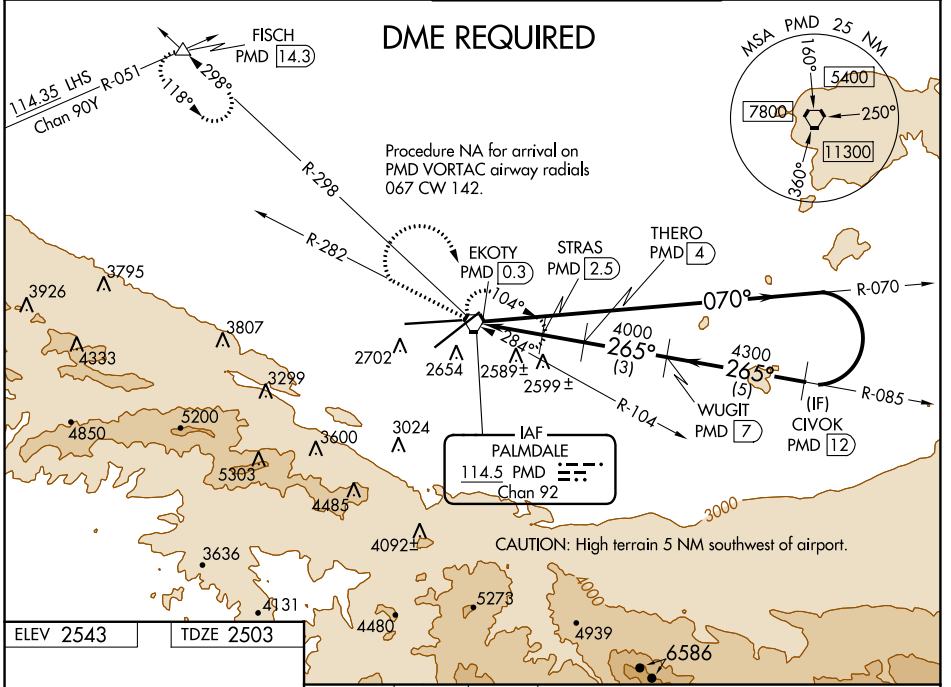
# VOR or TACAN RWY 25

PALMDALE USAF PLANT 42 (PMD)

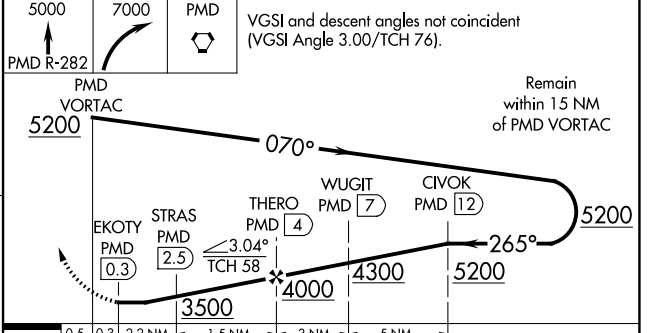
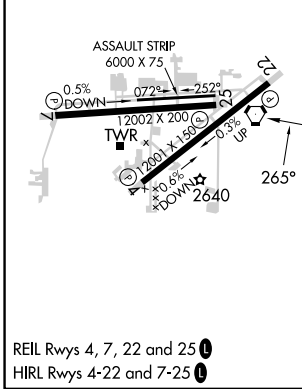
**▼** Circling NA for Cats C, D, and E south of Rws 4 and 25.  
**▲** DME required.

MISSED APPROACH: Climb to 5000 on PMD VORTAC R-282 then climbing right turn to 7000 direct PMD VORTAC and hold (TACAN aircraft climbing right turn to 6700 on PMD VORTAC. R-298 to FISCH INT/ 14.3 DME and hold SE left turn 298° inbound, continue climb-in-hold to 6700).

ATIS <b>118.275</b>	JOSHUA APP CON <b>124.55 363.0</b>	PALMDALE TOWER ★ <b>123.7 (CTAF) 0 317.6</b>	GND CON <b>121.9 317.6</b>
------------------------	---------------------------------------	---	-------------------------------



ELEV 2543	TDZE 2503
-----------	-----------



CATEGORY	A	B	C	D	E
S-25	2840-1 337 (300-1)				
<b>☑</b> CIRCLING	3020-1 477 (500-1)	3060-1 517 (600-1)	3140-1½ 597 (600-1½)	3740-3 1197 (1200-3)	3760-3 1217 (1300-3)

SW-3, 23 MAR 2023 to 20 APR 2023

SW-3, 23 MAR 2023 to 20 APR 2023