

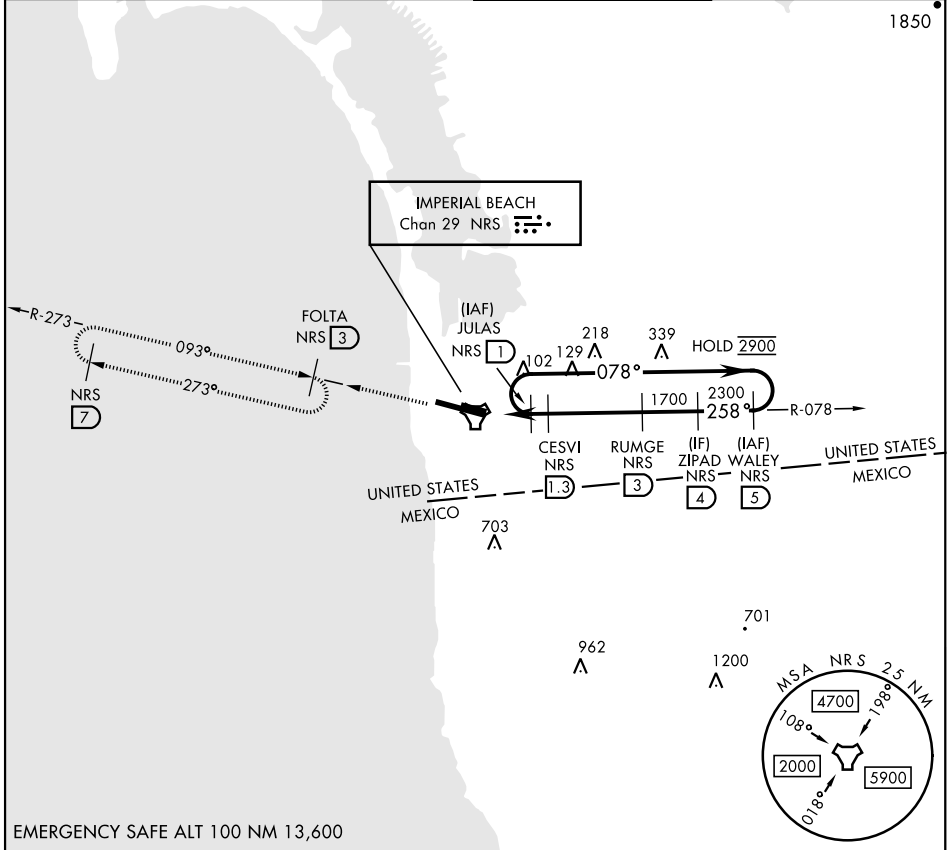
COPTER TACAN RWY 27

AL-307 [USN]

IMPERIAL BEACH NOLF (REAM FIELD) (KNRS)

TACAN Chan 29	APCH CRS 258°	Rwy Idg THRE Arpt Elev 4998 20 23
-------------------------	-------------------------	---

RADAR required.		MISSED APPROACH: Climb to 1800 on NRS TACAN R-078 to NRS, and R-273 to FOLTA. Continue climb in hold to 1800.	
▼ Max airspeed 90 KIAS.			
ATIS ★ /ASOS 276.2	SOCAL APP CON 125.15 317.55	IMPERIAL BEACH TOWER ★ 120.65 239.25	GND CON 285.575



EMERGENCY SAFE ALT 100 NM 13,600

JULAS 1 078° → 2900 ← 258°		1800 NRS R-078	NRS	ELEV 23	THRE 20
TACAN CISAV 0.5 CESVI 1.3 RUMGE 3 ZIPAD 4 WALEY 5 1700 2300 2900 258°		VDA RUMGE to thld 5.35° TCH 50			
0.8 NM 1.7 NM					
CATEGORY	COPTER				
H-27	400-½ 377 (400-½)				
HIRL Rwy 9-27					

COPTER TACAN RWY 27

SW-3, 23 MAR 2023 to 20 APR 2023

SW-3, 23 MAR 2023 to 20 APR 2023