

LOC/DME I-EXO 109.35 Chan 30(Y)	APP CRS 253°	Rwy Idg TDZE 113 Apt Elev 113	6004
--	------------------------	---	-------------

ILS or LOC RWY 25

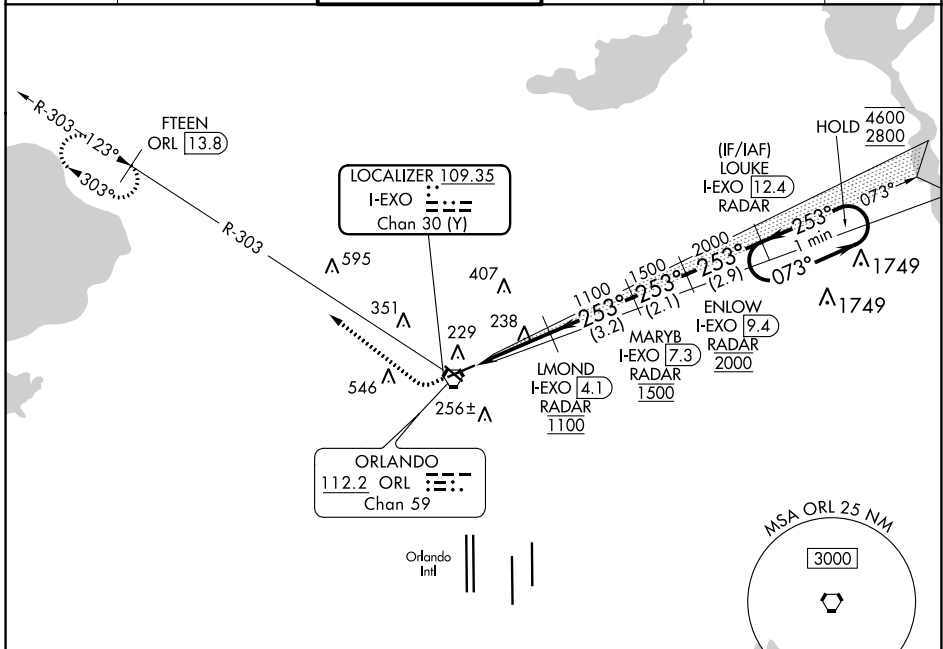
EXEC (ORL)

DME or RADAR required.

⚠ Circling Rwy 31 NA at night. In minimum visibility conditions, bright lights on highway ½ mile south of airport may be mistaken for runway lights.

MISSED APPROACH: Climb to 600 then climbing right turn to 1700 on heading 315° and on ORL VORTAC R-303 to FTEEN/ORL 13.8 DME and hold.

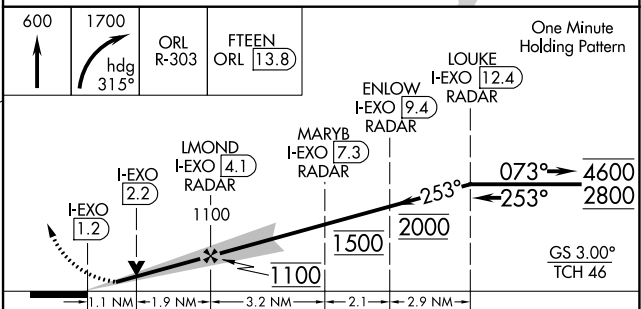
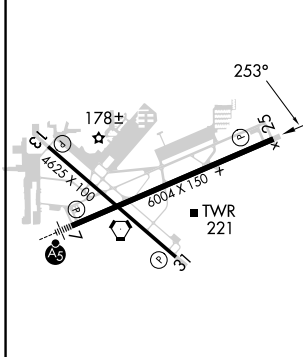
ATIS 127.25	ORLANDO APP CON 124.8 351.9	EXECUTIVE TOWER ★ 118.7(CTAF) 0 239.0	GND CON 121.4 239.0	CLNC DEL 128.45	UNICOM 122.95
-----------------------	---------------------------------------	---	-------------------------------	---------------------------	-------------------------



SE-3, 23 MAR 2023 to 20 APR 2023

SE-3, 23 MAR 2023 to 20 APR 2023

ELEV 113	D	TDZE 113
----------	----------	----------



REIL Rws 13 and 31 HIRL Rws 7-25 and 13-31	FAF to MAP 3 NM				
Knots	60	90	120	150	180
Min:Sec	3:00	2:00	1:30	1:12	1:00
C CIRCLING	580-1 467 (500-1)	680-1 567 (600-1)	860-2¼ 747 (800-2¼)	860-2½ 747 (800-2½)	