

TACAN Z RWY 18

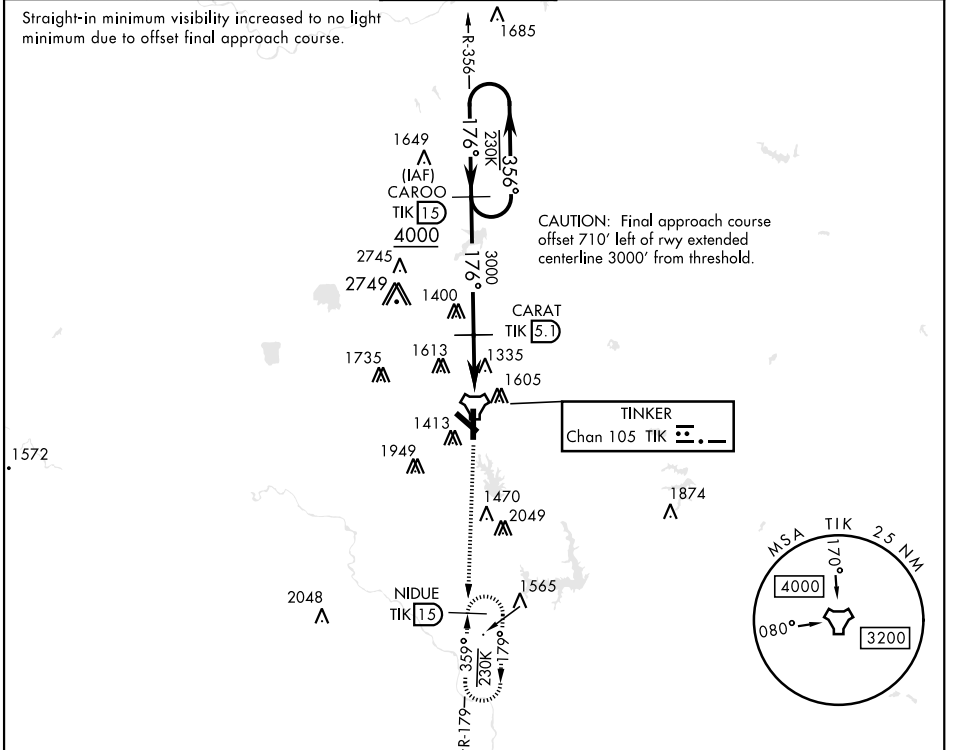
TACAN TIK Chan 105	APCH CRS 176°	Rwy Idg 11,100 THRE 1260 Arprt Elev 1291	AL-299 [USAF]	TINKER AFB (KTIK)
-----------------------	------------------	--	---------------	-------------------

* CAT E Circling NA in sector S of Rwy 13-31 and W of Rwy 18-36. Circling NA to Rwy 18.

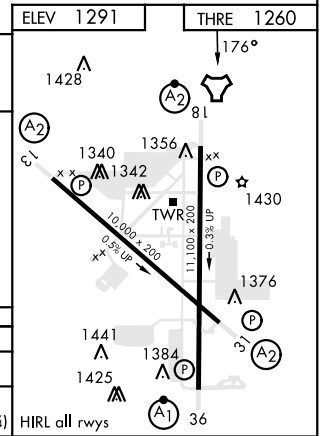
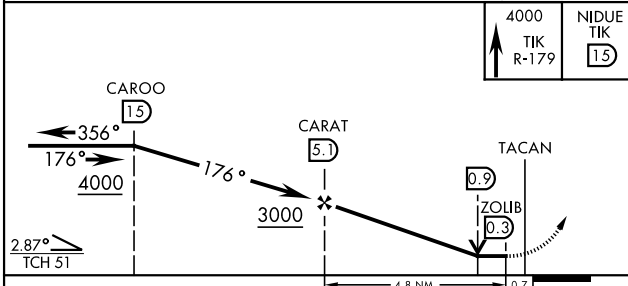
 SALSF MISSED APPROACH: Climb to 4000 on TIK TACAN R-179 to NIDUE and hold. Missed approach requires use of RNAV or ATC monitoring.

ATIS ★ 270.1	OKE CITY APP CON 124.2 336.4	TOWER 124.45 251.05	GND CON 121.8 275.8	CLNC DEL 119.7 335.8	ASR
-----------------	---------------------------------	------------------------	------------------------	-------------------------	-----

Straight-in minimum visibility increased to no light minimum due to offset final approach course.



EMERG SAFE ALT 100 NM 4700



CATEGORY	A	B	C	D	E
S-18	1720/55	460 (500-1)	1720/55	460	(500-1½)
CIRCLING *	1820-1 529 (600-1)	1840-1 549 (600-1)	1960-1¾ 669 (700-1¾)	1960-2 669 (700-2)	1960-2¼ 669 (700-2¼)

OKLAHOMA CITY, OKLAHOMA 35°25'N-97°23'W TINKER AFB (KTIK)

Amdt 4 23MAR23

TACAN Z RWY 18

SC-1, 23 MAR 2023 to 20 APR 2023

SC-1, 23 MAR 2023 to 20 APR 2023