

# ILS or LOC/DME Z RWY 36

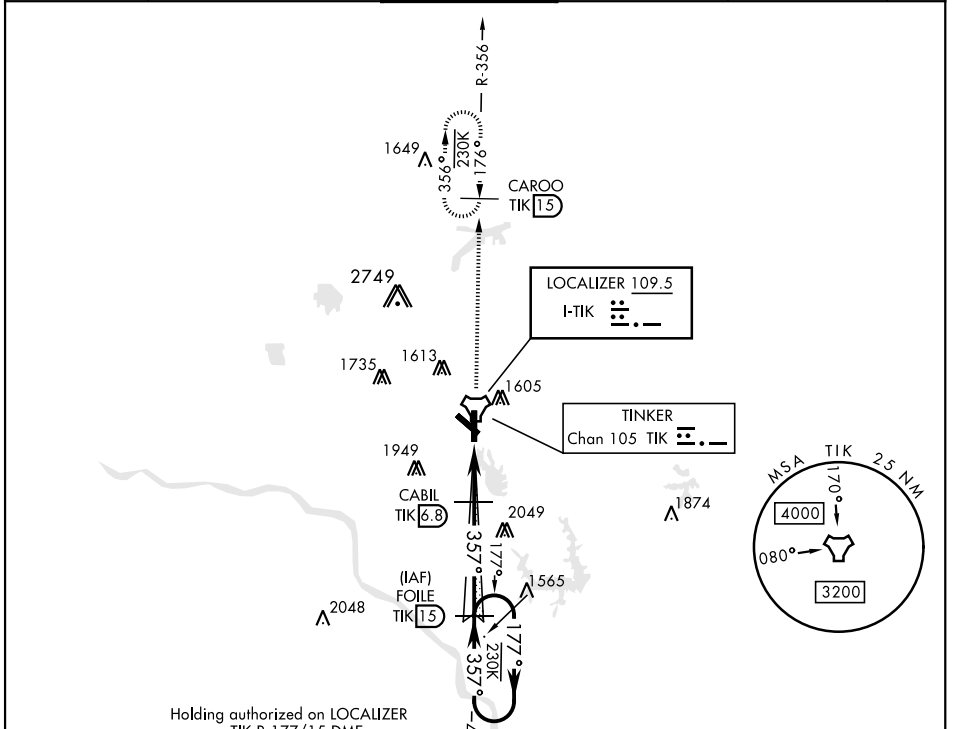
LOC I-TIK <b>109.5</b>	APCH CRS <b>357°</b>	Rwy ldg <b>11,100</b> TDZE <b>1291</b> Arprt Elev <b>1291</b>	AL-299 [USAF]	TINKER AFB (KTIK)
---------------------------	-------------------------	---	---------------	-------------------

\* When ALS inop, increase CAT ABC RVR to 50 and vis to 1 mile, CAT DE RVR to 60 and vis to 1 1/4 mile.  
 \*\* CAT E Circling NA to Rwy 18 and in sector S of Rwy 13-31 and W of Rwy 18-36.



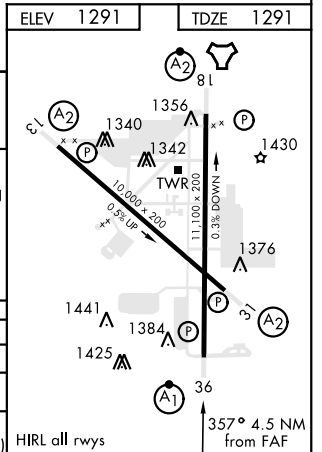
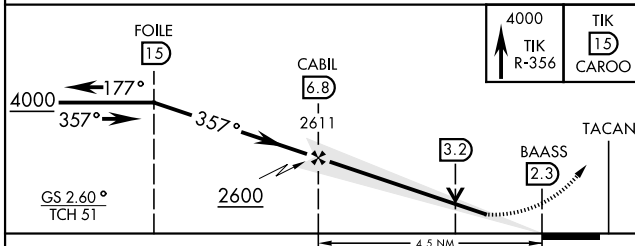
MISSED APPROACH: Climb to 4000 on TIK TACAN R-356 to CAROO and hold.

ATIS ★ <b>270.1</b>	OKE CITY APP CON <b>120.45 288.325</b>	TOWER <b>124.45 251.05</b>	GND CON <b>121.8 275.8</b>	CLNC DEL <b>119.7 335.8</b>	ASR
------------------------	---	-------------------------------	-------------------------------	--------------------------------	-----



Holding authorized on LOCALIZER or TIK R-177/15 DME.

EMERG SAFE ALT 100 NM 4700



CATEGORY	A	B	C	D	E
S-ILS 36	1491/24		200	(200-1/2)	
S-LOC 36 *	1680/24	389 (400-1/2)	1680/35	389 (400-3/4)	
CIRCLING **	1820-1 529 (600-1)	1840-1 549 (600-1)	1960-1 3/4 669 (700-1 3/4)	1960-2 669 (700-2)	1960-2 1/4 669 (700-2 1/4)

HIRL all rwys

# ILS or LOC/DME Z RWY 36

SC-1, 23 MAR 2023 to 20 APR 2023

SC-1, 23 MAR 2023 to 20 APR 2023