


OKLAHOMA CITY, OKLAHOMA

HI-TACAN Y RWY 18

TACAN TIK Chan 105	APCH CRS 176°	Rwy Idg 11,100 THRE 1260 Arprt Elev 1291
------------------------------	-------------------------	---

AL-299 [USAF]

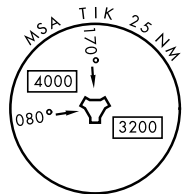
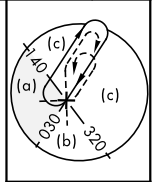
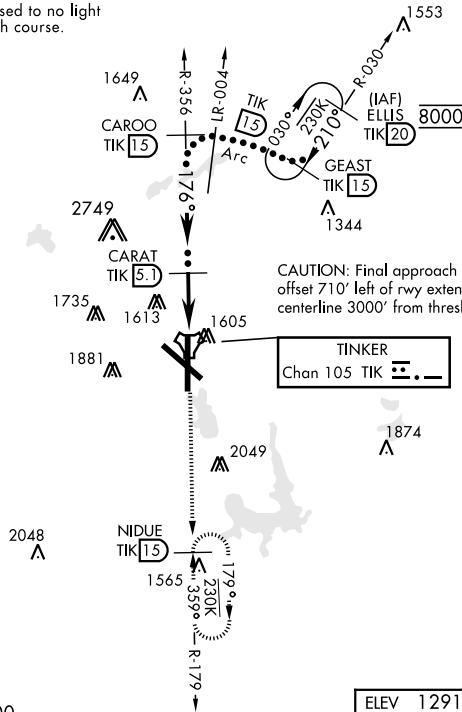
TINKER AFB (KTIK)

* CAT E circling not authorized in sector S of Rwy 13-31. Circling not authorized to Rwy 18. 
† MISSED APPROACH: Climb to 4000 on TIK TACAN R-179 to NIDUE and hold.

ATIS ★ 270.1	OKC CITY APP CON 124.2 336.4	TOWER 124.45 251.05	GND CON 121.8 275.8	CLNC DEL 119.7 335.8	ASR
------------------------	--	-------------------------------	-------------------------------	--------------------------------	-----

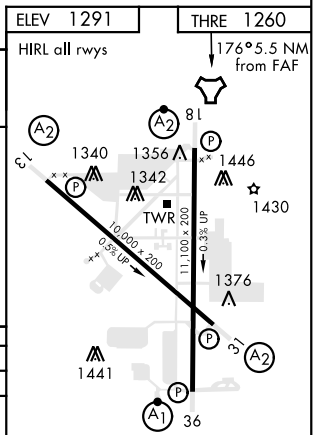
† Missed approach requires use of RNAV or ATC monitoring.

Straight-in minimum visibility increased to no light minimum due to offset final approach course.



EMERG SAFE ALT 100 NM 4700

	ELLIS R-030 20	GEAST R-030 15	CAROO R-356 15	CARAT 5.1	TACAN IZOLIB 0.9 0.3
	8000	8000	4000	3000	
	2.87°	210°	176°		
	TCH 51		Arc 15	4.8 NM	0.7
CATEGORY	C		D	E	
S-18	1720/55		460	(500-1)	
CIRCLING *	1960-1¾ 669 (700-1¾)	1960-2 669 (700-2)	1960-2¼ 669 (700-2¼)		



OKLAHOMA CITY, OKLAHOMA

35°25'N-97°23'W

TINKER AFB (KTIK)

Amtd 4 23APR20

HI-TACAN Y RWY 18

SC-1, 23 MAR 2023 to 20 APR 2023

SC-1, 23 MAR 2023 to 20 APR 2023