

OKLAHOMA CITY, OKLAHOMA

HI-ILS or LOC/DME Y RWY 36

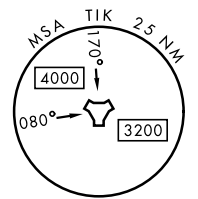
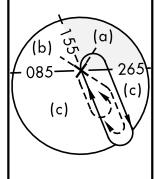
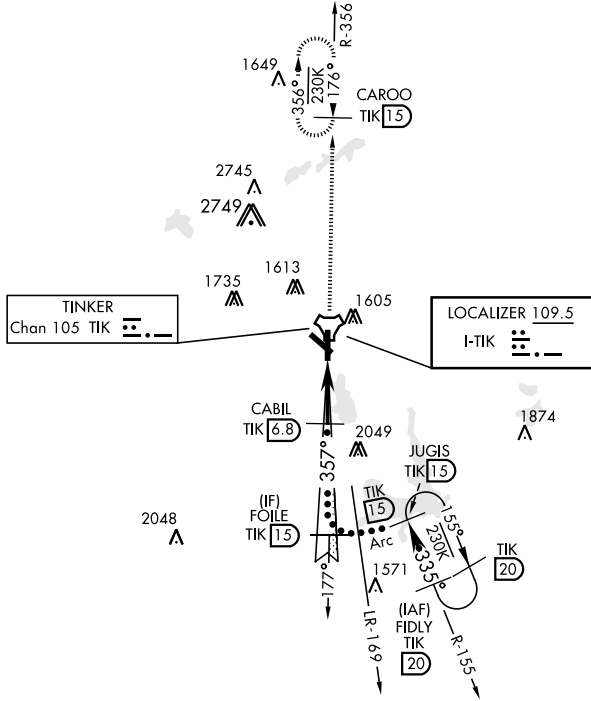
LOC I-TIK 109.5	APCH CRS 357°	Rwy ldg 11,100 TDZE 1291 Arprt Elev 1291	AL-299 [USAF]	TINKER AFB (KTIK)
---------------------------	-------------------------	---	---------------	-------------------

- * When ALS inop, increase CAT CDE RVR to 40 and vis to 3/8 mile.
- ** When ALS inop, increase CAT CDE RVR to 45 and vis to 7/8 mile.
- *** CAT E circling NA in sector S of Rwy 13-31.
Circling not authorized to RWY 18.



MISSED APPROACH: Climb to 4000 on TIK R-356 to CAROO and hold.

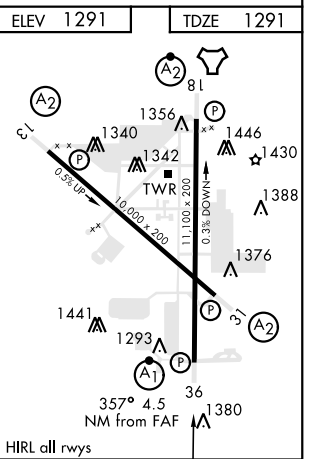
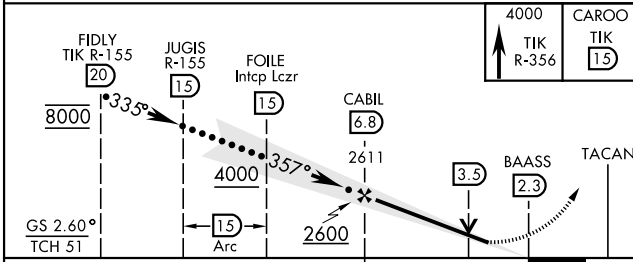
ATIS * 270.1	OKE CITY APP CON 120.45 288.325	TOWER 124.45 251.05	GND CON 121.8 275.8	CLNC DEL 119.7 335.8	ASR
------------------------	---	-------------------------------	-------------------------------	--------------------------------	-----



SC-1, 23 MAR 2023 to 20 APR 2023

SC-1, 23 MAR 2023 to 20 APR 2023

EMERG SAFE ALT 100 NM 4700



CATEGORY	C	D	E
S-ILS 36*	1491/24	200 (200-1/2)	
S-LOC 36**	1680/35	389 (400-3/4)	
CIRCLING***	1960-1 3/4 669 (700-1 3/4)	1960-2 669 (700-2)	1960-2 1/4 669 (700-2 1/4)

OKLAHOMA CITY, OKLAHOMA

35°25'N-97°23'W

TINKER AFB (KTIK)

Amtd 6 23APR20

HI-ILS or LOC/DME Y RWY 36