

OKLAHOMA CITY, OKLAHOMA


HI-ILS or LOC/DME Y RWY 18

LOC I-FRJ 111.3	APCH CRS 177°	Rwy Idg 11,100 TDZE 1267 Arpt Elev 1291
---------------------------	-------------------------	--

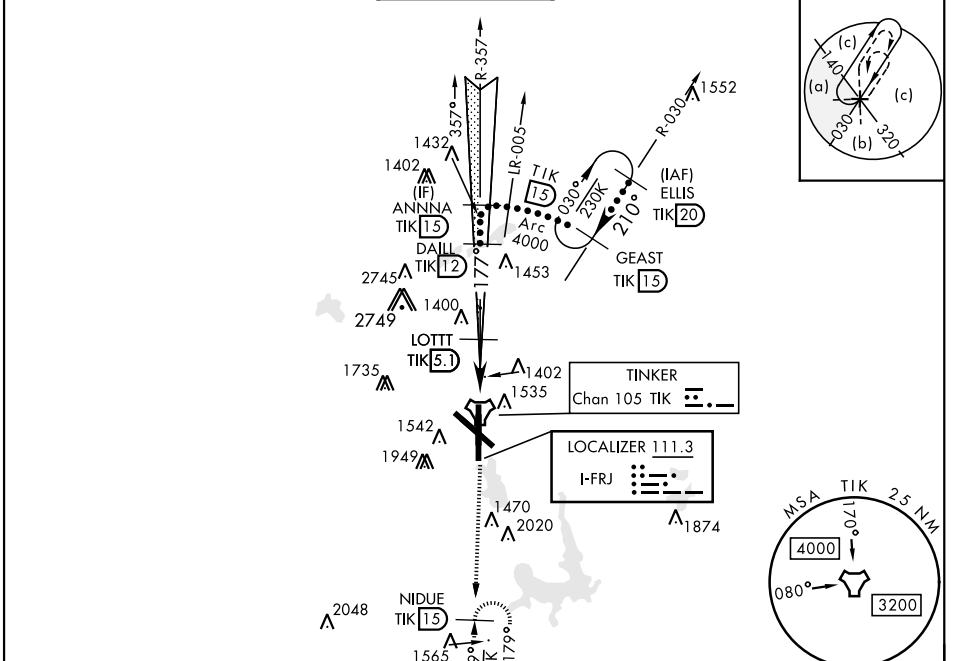
AL-299 [USAF]

TINKER AFB (KTIK)

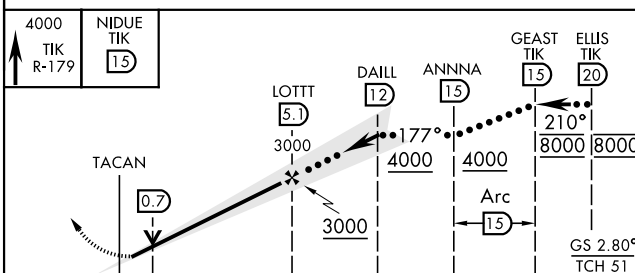
▼ * When ALS inop, increase CAT CDE RVR to 55 and vis to 1 mile.
 ** CAT E circling NA in sector S of Rwy 13-31 and W of RWY 18. Circling NA to Rwy 18.

SALS

 MISSED APPROACH: Climb to 4000 on TIK TACAN R-179 to NIDUE and hold.

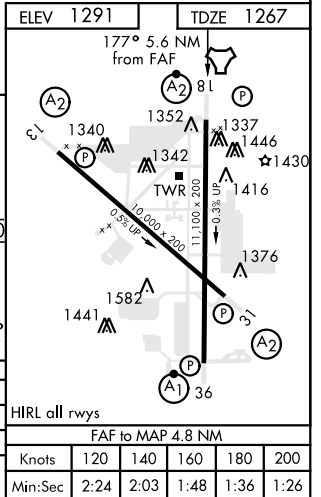
ATIS ★ 270.1	OKE CITY APP CON 124.2 336.4	TOWER 124.45 251.05	GND CON 121.8 275.8	CLNC DEL 119.7 335.8	ASR
------------------------	--	-------------------------------	-------------------------------	--------------------------------	-----



Localizer unusable from TIK 0.1 DME to rwy threshold.
 Localizer NA beyond 15° right of course.
 EMERG SAFE ALT 100 NM 4700



CATEGORY	C	D	E
S-ILS 18	1467/40	200	(200-¾)
S-LOC 18 *	1640/40	373	(400-¾)
CIRCLING **	1960-1¾ 669 (700-1¾)	1960-2 669 (700-2)	1960-2¼ 669 (700-2¼)



Knots	FAF to MAP 4.8 NM				
	120	140	160	180	200
Min:Sec	2:24	2:03	1:48	1:36	1:26

OKLAHOMA CITY, OKLAHOMA

35°25'N-97°23'W

TINKER AFB (KTIK)

Amtd 6 23APR20

HI-ILS or LOC/DME Y RWY 18

SC-1, 23 MAR 2023 to 20 APR 2023

SC-1, 23 MAR 2023 to 20 APR 2023