

HI-TACAN Y RWY 10

TACAN NGU Chan 86Y	APCH CRS 097°	Rwy ldg 8071 TDZE 14 Arpt Elev 15
------------------------------	-------------------------	--

AL-290 [USN]

NORFOLK NS (CHAMBERS FIELD) (KNGU)

RADAR required.

ALSF-2

MISSED APPROACH: Climbing left turn to 2300 on NGU TACAN R-053 then as directed by ATC.

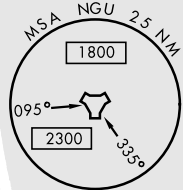
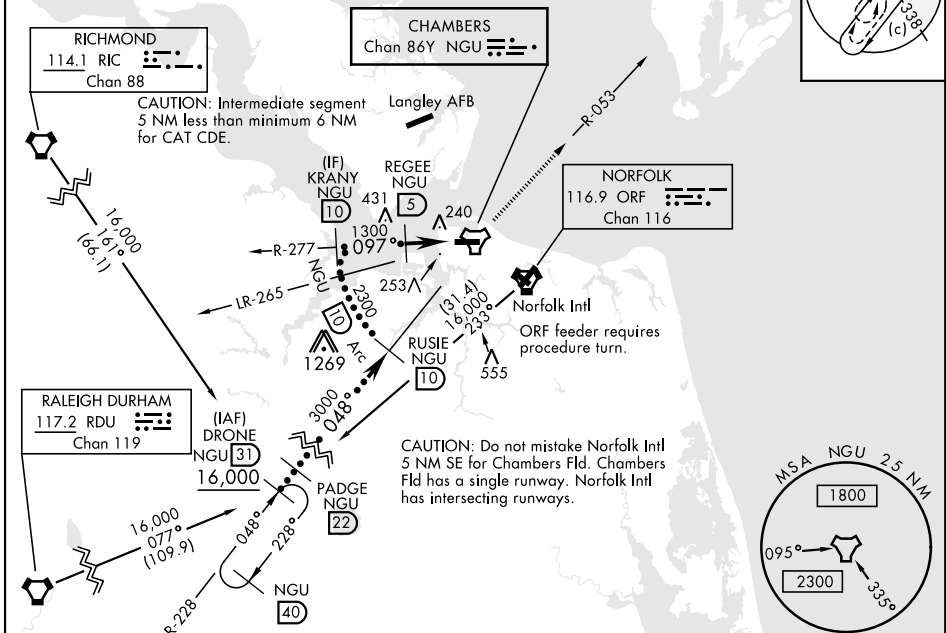
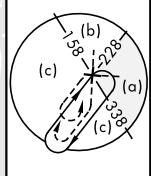
* When ALS inop, increase CAT CDE vis to 1½ miles.
** Circling not authorized S of Rwy 10-28.

ATIS 118.425 342.0	APP CON 118.9 273.475	CHAMBERS TOWER 124.3 379.15	GND CON 121.8 370.85	ASR/PAR
------------------------------	---------------------------------	---------------------------------------	--------------------------------	---------

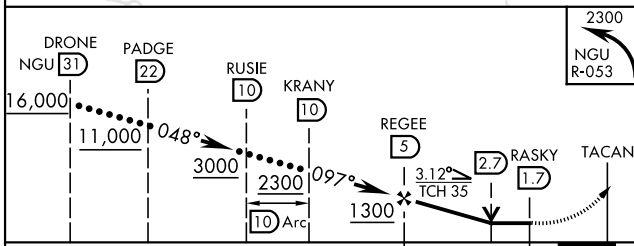
FAC 393 ft from rwy CL at 3000 ft from thld.

NORFOLK NS HELIPORT 1 NM NW
Use caution in circling approach.

A 758

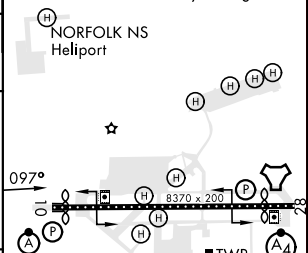


EMERG SAFE ALT 100 NM 4100



ELEV 15	TDZE 14
---------	---------

Rwy 10 ldg 8071'
Rwy 28 ldg 7375'



CATEGORY	C	D	E
S-10*	520-1	506	(600-1)
CIRCLING**	540-1½ 525 (600-1½)	580-2	565 (600-2)

HIRL Rwy 10-28
REIL Rwy 10-28
TDZL/CL Rwy 10-28

HI-TACAN Y RWY 10

NE-3, 23 MAR 2023 to 20 APR 2023

NE-3, 23 MAR 2023 to 20 APR 2023