

VOR/DME LGA	APP CRS	Rwy Idg	<b>7001</b>
<b>113.1</b>	<b>046°</b>	TDZE	<b>21</b>
Chan <b>78</b>		Apt Elev	<b>21</b>

# VOR RWY 4

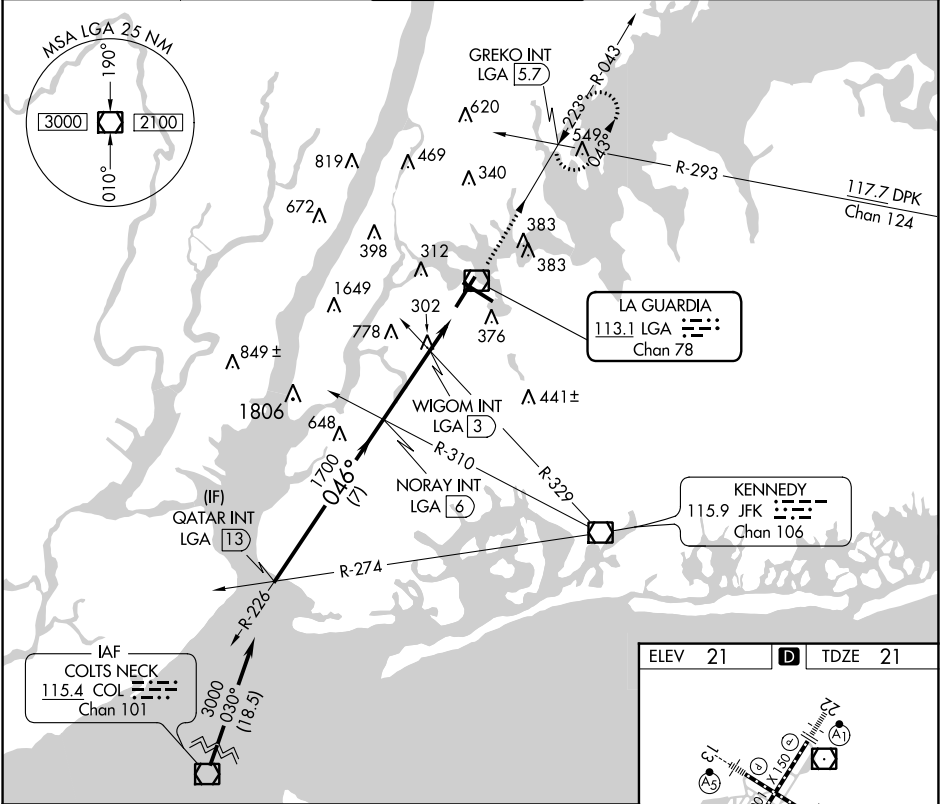
LAGUARDIA (LGA)

**▼** Inop table does not apply to Cats A and B.

**▲** MALSR 

MISSED APPROACH: Climb to 2000 on LGA VOR/DME R-043 to GREKO INT/LGA 5.7 DME and hold, continue climb-in-hold to 2000.

D-ATIS ARR	<b>125.95</b>	NEW YORK APP CON	<b>120.8 263.0</b>	LAGUARDIA TOWER	<b>118.7 263.0</b>	GND CON	<b>121.7 263.0</b>	CLNC DEL	<b>135.2</b>	CPDLC
D-ATIS DEP	<b>127.05</b>									



NE-2, 23 MAR 2023 to 20 APR 2023

NE-2, 23 MAR 2023 to 20 APR 2023

Procedure Turn NA	QATAR INT LGA 13	NORAY INT LGA 6	WIGOM INT LGA 3	GREKO INT
	3000	1700	700	LGA 1.1
	046°	3.11°	TCH 66	LGA R-043
	7 NM	3 NM	1.9 NM	
CATEGORY	A	B	C	D
S-4	560/50	539 (600-1)	560/60	539 (600-1 1/4)
<b>C</b> CIRCLING	700-1	679 (700-1)	1080-3	1260-3
			1059 (1100-3)	1239 (1300-3)

ELEV 21	<b>D</b> TDZE 21
---------	------------------

Diagram of Runway 4 showing taxiway layout, tower location (TWR 240), and runway dimensions (7003 X 150). Runway 4 is oriented at 046°.

TDZ/CL Rws 4, 13 and 22  
HIRL Rws 4-22 and 13-31  
REIL Rwy 31

FAC to MAP 4.9 NM					
Knots	60	90	120	150	180
Min:Sec	4:54	3:16	2:27	1:58	1:38