

APP CRS	Rwy Idg	7003
089°	TDZE	7
	Apt Elev	21

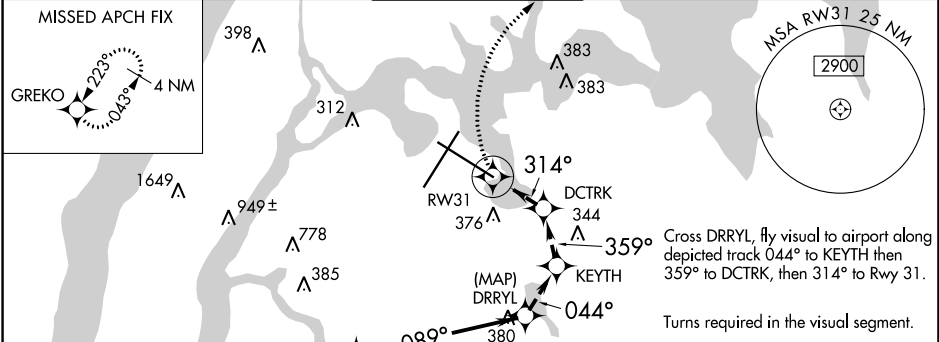
RNAV (GPS) X RWY 31

LAGUARDIA (LGA)

RNP APCH - GPS.
 RADAR required.
 ▼ Rwy 31 helicopter visibility reduction below ¾ SM NA.
 ▲

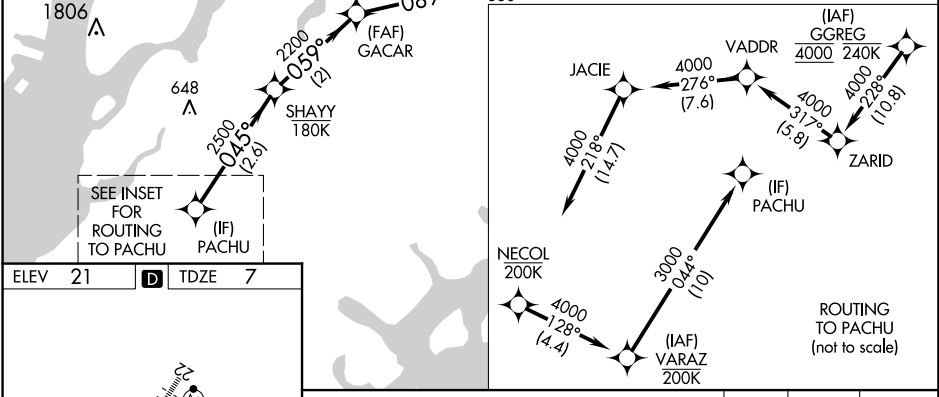
MISSED APPROACH: (Do not exceed 165K until Rwy 31 then do not exceed 210K until GREKO). Climb to 2000 on FMS lateral path to RW31, then climbing right turn direct GREKO and hold. If unable to follow the FMS lateral path, turn left heading 025° and climb to 2000 direct GREKO and hold.

D-ATIS ARR	125.95	NEW YORK APP CON	120.8 263.0	LAGUARDIA TOWER	118.7 263.0	GND CON	121.7 263.0	CLNC DEL	135.2	CPDLC
D-ATIS DEP	127.05									

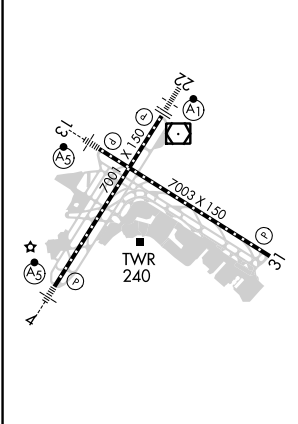


NE-2, 23 MAR 2023 to 20 APR 2023

NE-2, 23 MAR 2023 to 20 APR 2023



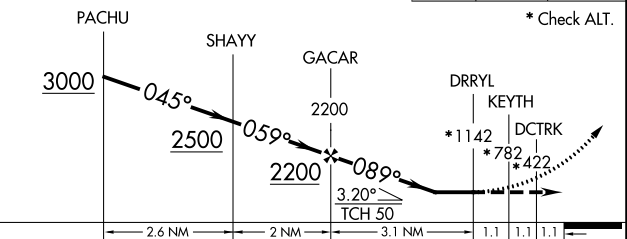
ELEV	21	D	TDZE	7
------	----	---	------	---



VGSI and descent angles not coincident (VGSI Angle 3.00/TCH 71).

2000 GREKO

* Check ALT.



CATEGORY	A	B	C	D
LNAV MDA	1160-4	1153 (1200-4)		