

# MILTON FOUR ARRIVAL

NE-2, 23 MAR 2023 to 20 APR 2023

## KEATING TRANSITION (ETG.MIP4):

## PHILPSBURG TRANSITION (PSB.MIP4):

## STONYFORK TRANSITION (SFK.MIP4):

From over MIP VORTAC on MIP R-117 and FJC R-298 to FJC VORTAC, then on SBJ R-295 to LIZZI INT, then on RBV VORTAC R-323 to BEUTY INT, then on COL VOR/DME R-303 to HARLM INT and DREMS INT, then on JFK VOR/DME R-263 to APPLE INT, then on LGA VOR/DME R-225 to PROUD INT.

Expect radar vectors to final approach course.

D-ATIS ARR  
125.95  
NEW YORK APP CON  
125.85 263.0

STONYFORK  
108.6 SFK  
Chan 23  
N41°41.72'-W77°25.19'  
L-30, H-10-12

KEATING  
116.0 ETG  
Chan 107  
N41°12.90'-W78°08.57'  
L-30, H-10-12

PHILPSBURG  
115.5 PSB  
Chan 102  
N40°54.98'-W77°59.56'  
L-30, H-10-12

MILTON  
109.2 MIP  
Chan 29  
N41°01.40'-W76°39.92'

WILKES-BARRE  
111.6 LVZ  
Chan 53  
N41°41.72'-W77°25.19'

ALENTOWN  
117.5 FIC  
Chan 122  
N40°43.60'-W75°27.28'

VIBES  
N40°45.79'  
W75°36.03'

BEUTY  
N40°34.15'  
W75°00.69'  
Expect to cross  
at 10000'

YARDLEY  
108.2 ARD  
Chan 19

ROBBINSVILLE  
113.8 RBV  
Chan 85

DREMS  
N40°25.67'  
W74°32.45'

COLTS NECK  
115.4 COL  
Chan 101

LA GUARDIA  
113.1 LGA  
Chan 78

SOLBERG  
112.9 SBJ  
Chan 76  
N40°34.98'-W74°44.51'

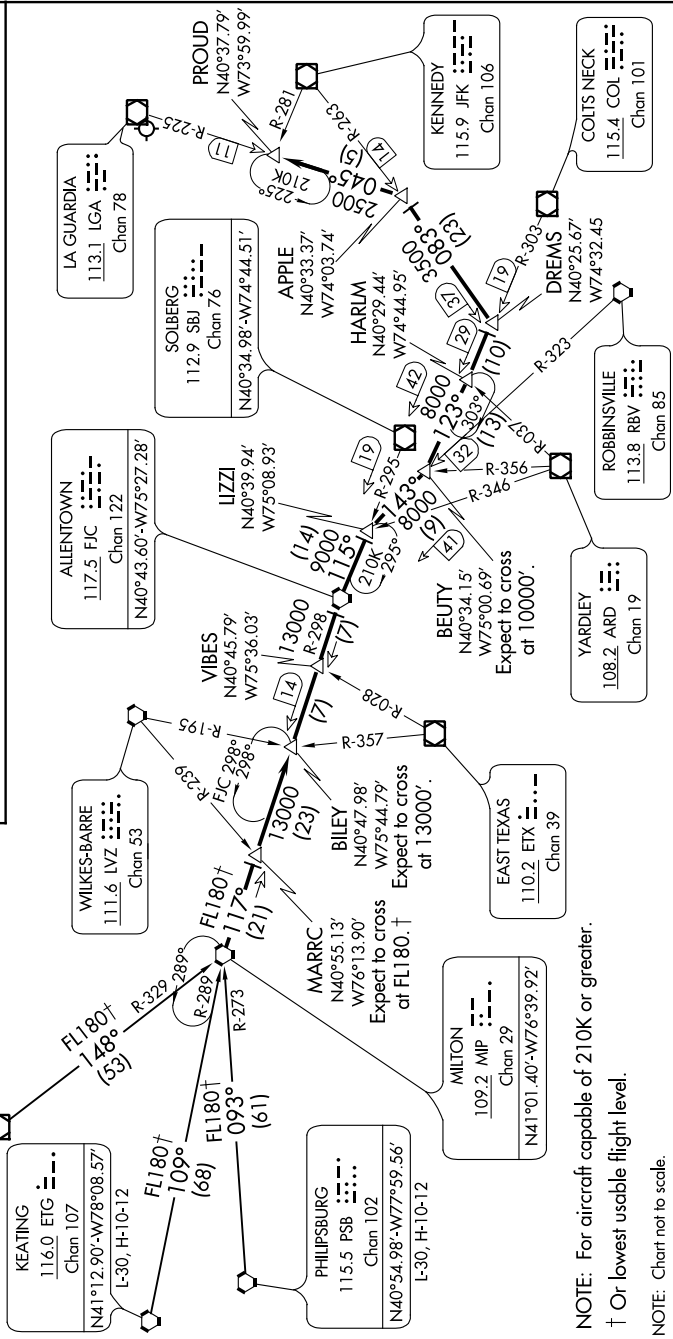
APPLE  
N40°33.37'  
W74°03.74'

HARLM  
N40°29.44'  
W74°44.95'

KENNEDY  
115.9 JFK  
Chan 106

ROBBINSVILLE  
113.8 RBV  
Chan 85

COLTS NECK  
115.4 COL  
Chan 101



NOTE: For aircraft capable of 210K or greater.

† Or lowest usable flight level.

NOTE: Chart not to scale.

# MILTON FOUR ARRIVAL

NE-2, 23 MAR 2023 to 20 APR 2023