

|   |                        |   |             |
|---|------------------------|---|-------------|
| LOC/DME I-LGA<br><b>110.5</b><br>Chan <b>42</b> | APP CRS<br><b>044°</b> | Rwy Idg<br>TDZE <b>21</b><br>Apt Elev <b>21</b> | <b>7001</b> |
|---|------------------------|---|-------------|

# ILS or LOC RWY 4 LAGUARDIA (LGA)

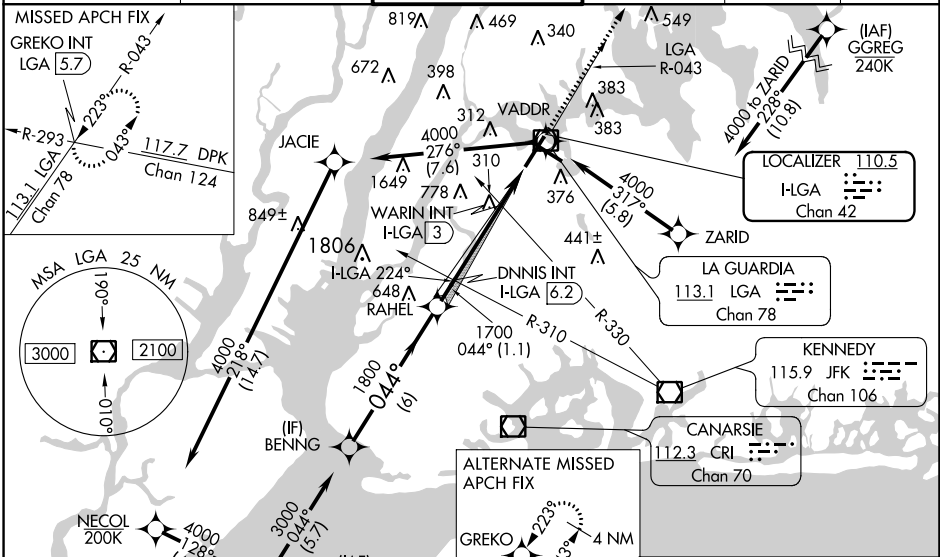
RNP APCH - GPS.

**▼** Rwy 4 helicopter visibility reduction below RVR 5000 NA. Inop table does not apply to S-ILS 4 all Cats, S-LOC 4 Cats A and B and WARIN fix minimums Cats A and B.  
**▲** For inop ALS increase S-ILS 4 all Cats visibility to RVR 4500. Going below glidepath may not provide obstacle clearance inside DA. Crossing Rwy threshold below charted TCH may not provide required visual area obstacle clearance. DME from LGA VOR/DME. Autopilot couple approach NA. Circling NA northwest of Rwy 4 and southwest of Rwy 13.  
 \* RVR 2400 authorized with use of FD or HUD to DA.



**MISSED APPROACH:**  
Climb to 2000 on LGA VOR/DME R-043 to GREKO INT/LGA 5.7 DME and hold, continue climb-in-hold to 2000.

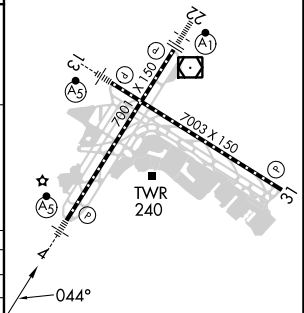
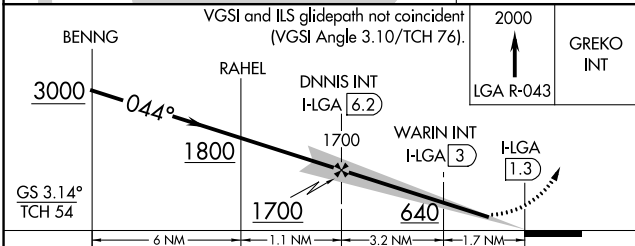
|  |  |                                       |                               |                          |       |
|--|--|---------------------------------------|-------------------------------|--------------------------|-------|
| D-ATIS ARR <b>125.95</b><br>D-ATIS DEP <b>127.05</b> | NEW YORK APP CON<br><b>120.8 263.0</b> | LAGUARDIA TOWER<br><b>118.7 263.0</b> | GND CON<br><b>121.7 263.0</b> | CLNC DEL<br><b>135.2</b> | CPDLC |
|--|--|---------------------------------------|-------------------------------|--------------------------|-------|



NE-2, 23 MAR 2023 to 20 APR 2023

NE-2, 23 MAR 2023 to 20 APR 2023

|         |                  |
|---------|------------------|
| ELEV 21 | <b>D</b> TDZE 21 |
|---------|------------------|



|   |                    |             |                      |                        |
|---|--------------------|-------------|----------------------|------------------------|
| CATEGORY  | A                  | B           | C                    | D                      |
| S-ILS 4 *   | 283/40 262 (300-¾) |             |                      |                        |
| S-LOC 4   | 640/50             | 619 (700-1) | 640-1⅓               | 619 (700-1⅓)           |
| <b>C</b> CIRCLING                                       | 680-1              | 659 (700-1) | 700-2<br>679 (700-2) | 760-2¼<br>739 (800-2¼) |
| WARIN FIX MINIMUMS (DUAL VOR RECEIVERS OR DME REQUIRED) |                    |             |                      |                        |
| S-LOC 4   | 560/50             | 539 (600-1) | 560/55               | 539 (600-1)            |
| <b>C</b> CIRCLING                                       | 680-1              | 659 (700-1) | 700-2<br>679 (700-2) | 760-2¼<br>739 (800-2¼) |

TDZ/CL Rws 4, 13 and 22  
HIRL Rws 4-22 and 13-31  
REIL Rwy 31

|                   |      |      |      |      |      |
|-------------------|------|------|------|------|------|
| FAF to MAP 4.9 NM |      |      |      |      |      |
| Knots             | 60   | 90   | 120  | 150  | 180  |
| Min:Sec           | 4:54 | 3:16 | 2:27 | 1:58 | 1:38 |