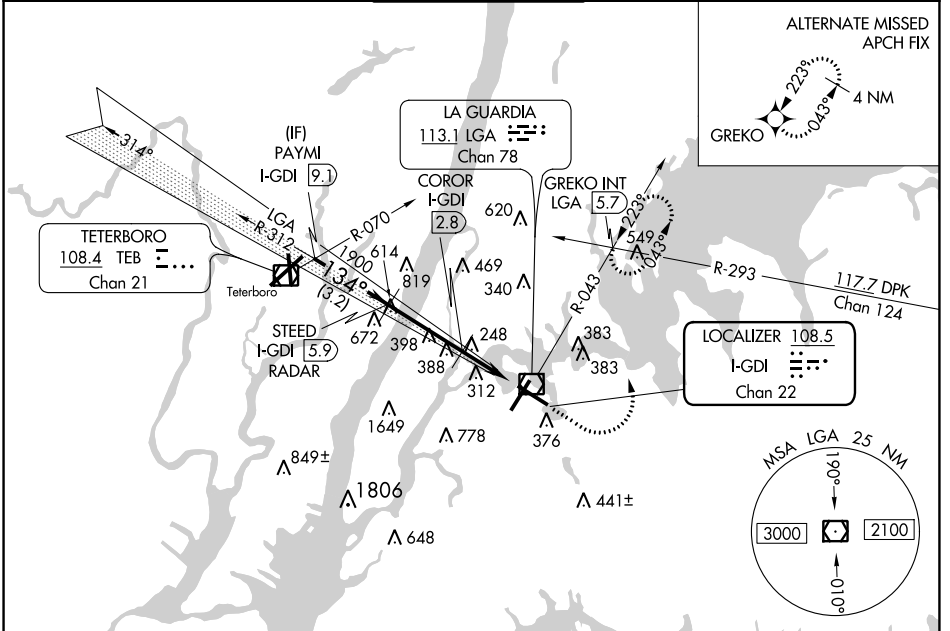


LOC/DME I-GDI <b>108.5</b> Chan <b>22</b>	APP CRS <b>134°</b>	Rwy Idg TDZE <b>12</b> Apt Elev <b>21</b>	<b>7003</b>
---	------------------------	---	-------------

# ILS or LOC RWY 13

LAGUARDIA (LGA)

Radar required for procedure entry. DME or RADAR required for LOC only.		MALSR	MISSED APPROACH: Climb to 800 then climbing left turn to 2000 on LGA VOR/DME R-043 to GREKO INT/LGA 5.7 DME and hold, continue climb-in-hold to 2000.	
⚠ For inop ALS, increase S-LOC 13 Cats C/D visibility to 2½ SM.				
D-ATIS ARR <b>125.95</b> D-ATIS DEP <b>127.05</b>	NEW YORK APP CON <b>120.8 263.0</b>	LAGUARDIA TOWER <b>118.7 263.0</b>	GND CON <b>121.7 263.0</b>	CLNC DEL <b>135.2</b> CPDLC



NE-2, 23 MAR 2023 to 20 APR 2023

NE-2, 23 MAR 2023 to 20 APR 2023

VGSi and ILS glidepath not coincident (VGSi Angle 3.10/TCH 55).		800	2000	GREKO INT
PAYMI I-GDI 9.1		# 1900 when assigned by ATC		* LOC only.
STEED I-GDI 5.9 RADAR		COROR I-GDI 2.8		* I-GDI 1.7
# 2800	134°	1900	* 800	
GS 3.10° TCH 49				
	3.2 NM	3.1 NM	1.1 NM	1.3 NM
CATEGORY	A	B	C	D
S-ILS 13	212/18		200 (200-½)	
S-LOC 13	800/24 788 (800-½)	800/40 788 (800-¾)	800-1¼	788 (800-1¼)
CIRCLING	800-1 779 (800-1)	800-1¼ 779 (800-1¼)	1080-3 1059 (1100-3)	1260-3 1239 (1300-3)
COROR FIX MINIMUMS				
S-LOC 13	500/24	488 (500-½)	500/50	488 (500-1)
CIRCLING	700-1	679 (700-1)	1080-3 1059 (1100-3)	1260-3 1239 (1300-3)
ELEV 21    TDZE 12				
TWR 240				
TDZ/CL Rws 4, 13 and 22 HIRL Rws 4-22 and 13-31 REIL Rwy 31				
FAF to MAP 5.5 NM				
Knots: 60 90 120 150 180 Min:Sec: 5:30 3:40 2:45 2:12 1:50				

# LAGUARDIA (LGA)

## ILS or LOC RWY 13