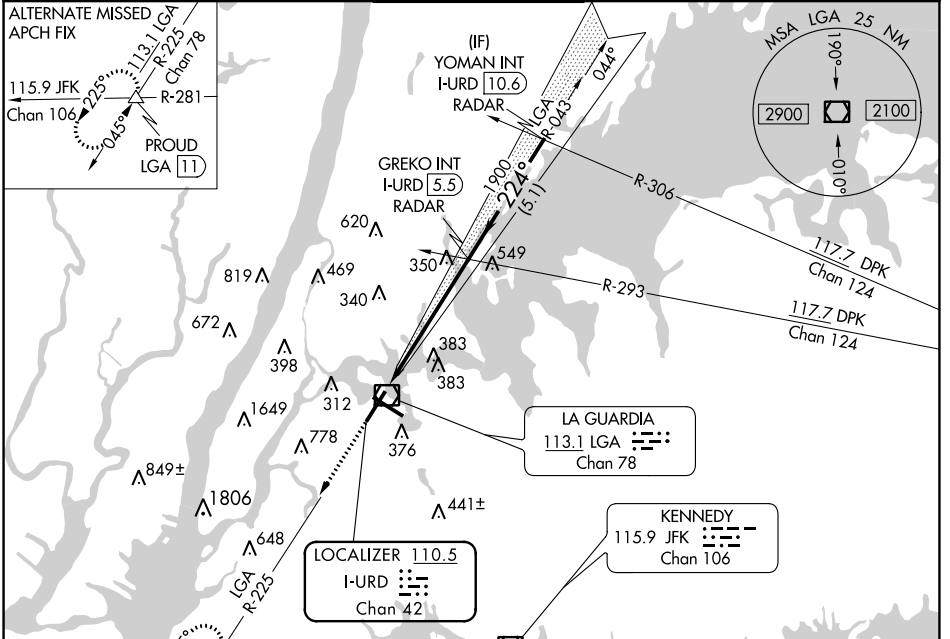


LOC/DME I-URD 110.5 Chan 42	APP CRS 224°	Rwy Idg TDZE 12 Apt Elev 21	7001
---	------------------------	---	-------------

ILS RWY 22 (SA CAT I & II) LAGUARDIA (LGA)

RADAR required for procedure entry.		ALSF-1 	MISSED APPROACH: Climb to 3000 on LGA VOR/DME R-225 to PROUD INT/LGA11 DME and hold, continue climb-in-hold to 3000.
<p>▼ SA CAT I: Requires specific OPSPEC, MSPEC or LOA approval and use of HUD to DH. SA CAT II: Reduced lighting: Requires specific OPSPEC, MSPEC, or LOA approval and use of autoland or HUD to touchdown.</p>			

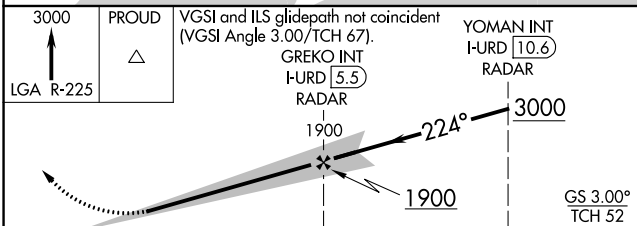
D-ATIS ARR 125.95	NEW YORK APP CON	LAGUARDIA TOWER	GND CON	CLNC DEL	CPDLC
D-ATIS DEP 127.05	120.8 263.0	118.7 263.0	121.7 263.0	135.2	



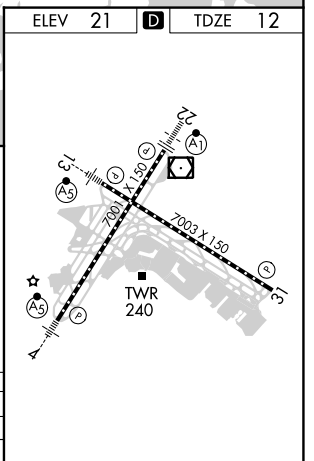
NE-2, 23 MAR 2023 to 20 APR 2023

NE-2, 23 MAR 2023 to 20 APR 2023

ELEV 21	D	TDZE 12
---------	----------	---------



3000	PROUD	VGSi and ILS glidepath not coincident (VGSi Angle 3.00/TCH 67).	YOMAN INT I-URD 10.6 RADAR
LGA R-225		GREKO INT I-URD 5.5 RADAR	
		1900	3000
		GS 3.00° TCH 52	
		5.7 NM	5.1 NM
CATEGORY	A	B	C
S-ILS 22	SA CAT I RA 162/14	150 DA 162	
S-ILS 22	SA CAT II RA 112/12	100 DA 112	



SA CATEGORY I & II ILS - SPECIAL AIRCREW & AIRCRAFT CERTIFICATION REQUIRED

TDZ/CL Rws 4, 13 and 22
HIRL Rws 4-22 and 13-31
REIL Rwy 31