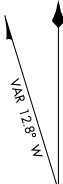


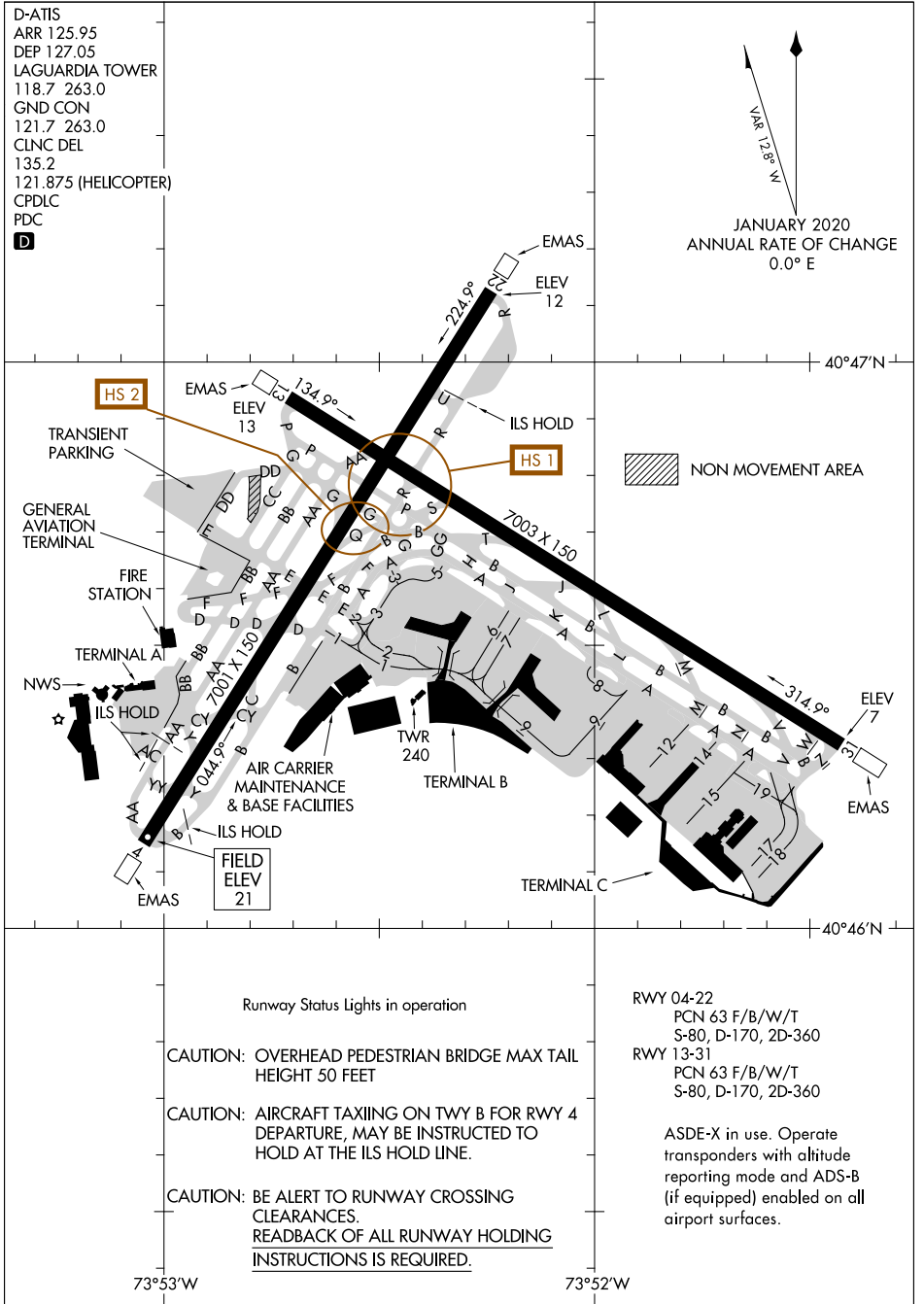
# AIRPORT DIAGRAM

AL-289 (FAA)

LAGUARDIA (L.G.A)  
NEW YORK, NEW YORK

D-ATIS  
 ARR 125.95  
 DEP 127.05  
 LAGUARDIA TOWER  
 118.7 263.0  
 GND CON  
 121.7 263.0  
 CLNC DEL  
 135.2  
 121.875 (HELICOPTER)  
 CPDLC  
 PDC  
**D**

  
 JANUARY 2020  
 ANNUAL RATE OF CHANGE  
 0.0° E



NE-2, 23 MAR 2023 to 20 APR 2023

NE-2, 23 MAR 2023 to 20 APR 2023

Runway Status Lights in operation

CAUTION: OVERHEAD PEDESTRIAN BRIDGE MAX TAIL HEIGHT 50 FEET

CAUTION: AIRCRAFT TAXIING ON TWY B FOR RWY 4 DEPARTURE, MAY BE INSTRUCTED TO HOLD AT THE ILS HOLD LINE.

CAUTION: BE ALERT TO RUNWAY CROSSING CLEARANCES. READBCK OF ALL RUNWAY HOLDING INSTRUCTIONS IS REQUIRED.

RWY 04-22  
 PCN 63 F/B/W/T  
 S-80, D-170, 2D-360

RWY 13-31  
 PCN 63 F/B/W/T  
 S-80, D-170, 2D-360

ASDE-X in use. Operate transponders with altitude reporting mode and ADS-B (if equipped) enabled on all airport surfaces.