

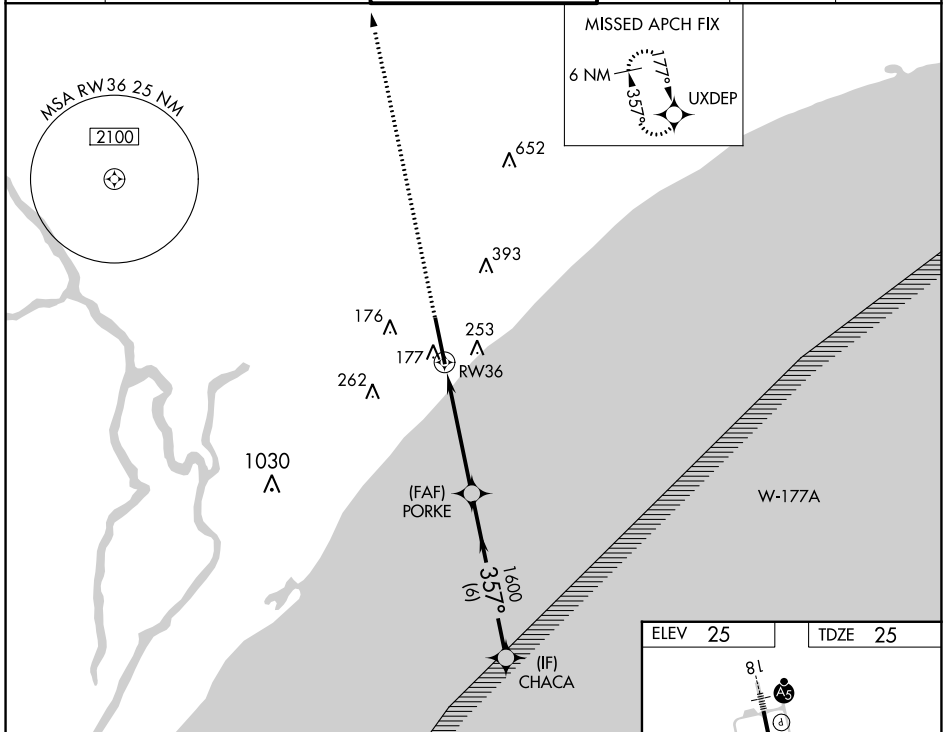
WAAS CH 93719 W36A	APP CRS 357°	Rwy Idg 9503 TDZE 25 Apt Elev 25
--	------------------------	---

RNAV (GPS) RWY 36

MYRTLE BEACH INTL (MYR)

RNP APCH.	<p>⚠ For uncompensated Baro-VNAV systems, LNAV/VNAV NA below -15°C or above 54°C.</p> <p>⚠ Inop table does not apply to LPV. For inop ALS, increase LNAV/VNAV Cats D/E visibility to RVR 6000, and LNAV Cats C/D/E visibility to 1 3/8 SM.</p>	MALSF 	MISSED APPROACH: Climb to 2000 direct UXDEP and hold.
-----------	--	-----------	--

ATIS 123.925	MYRTLE BEACH APP CON ★ (171° - 321°) 127.4 257.95 (322° - 170°) 119.2 350.3	MYRTLE BEACH TOWER ★ 128.45 (CTAF) 0 259.3	GND CON 120.3 275.8	CLNC DEL 120.3	UNICOM 122.95
------------------------	---	---	-------------------------------	--------------------------	-------------------------



SE-2, 23 MAR 2023 to 20 APR 2023

SE-2, 23 MAR 2023 to 20 APR 2023

2000	UXDEP	VGSi and RNAV glidepath not coincident (VGSi Angle 3.00/TCH 71).				
*LNAV only.						
CATEGORY	A	B	C	D	E	
LPV DA	225/40		200 (200-3/4)			
LNAV/VNAV DA	374/45		349 (400-7/8)			
LNAV MDA	480/40 455 (500-3/4)		480/50 455 (500-1)			
CIRCLING	560-1 535 (600-1)		740-2 715 (800-2)	740-2 1/4 715 (800-2 1/4)	740-2 1/2 715 (800-2 1/2)	

