

LOC/DME I-CJH <b>109.5</b> Chan <b>32</b>	APP CRS <b>240°</b>	Rwy Idg TDZE Apt Elev	<b>6501</b> <b>627</b> <b>629</b>
---	------------------------	-----------------------------	---

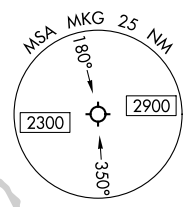
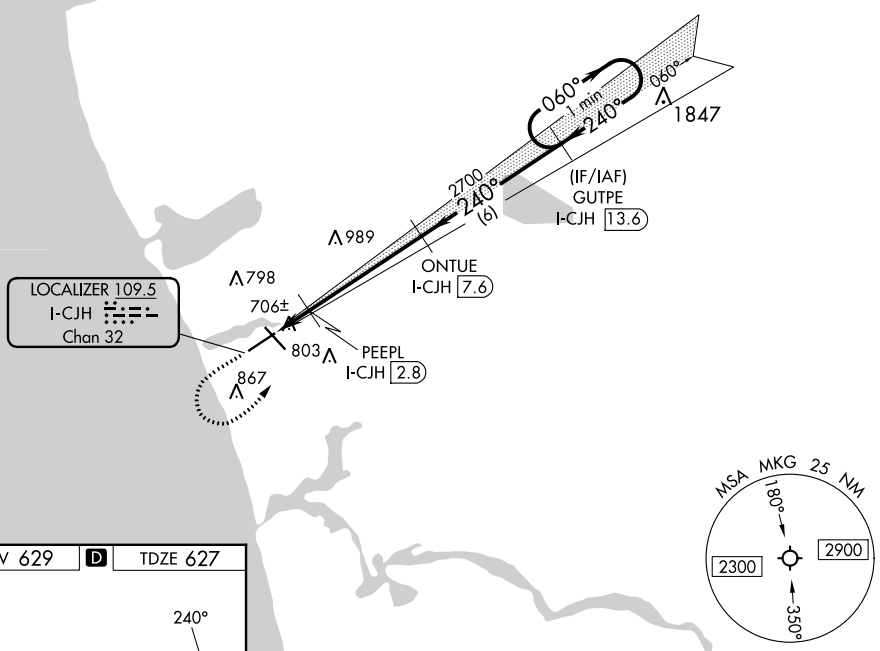
# ILS or LOC RWY 24

MUSKEGON COUNTY (MKG)

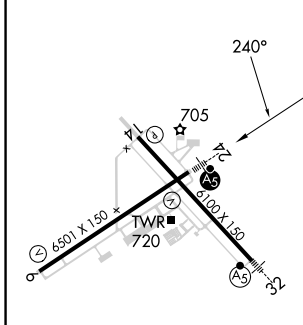
	DME required. RADAR required. RNAV 1-GPS required.	MALSR 	MISSED APPROACH: Climb to 2500 then climbing left turn to 3000 direct GUTPE and hold.
--	--	-----------	---

ATIS <b>124.3</b>	GREAT LAKES APP CON ★ <b>119.8 290.35</b> (North) <b>133.825 290.35</b> (South)	MUSKEGON TOWER ★ <b>126.25</b> (CTAF) <b>343.725</b>	GND CON <b>121.6</b>	UNICOM <b>122.95</b>
----------------------	---	---	-------------------------	-------------------------

## RADAR REQUIRED



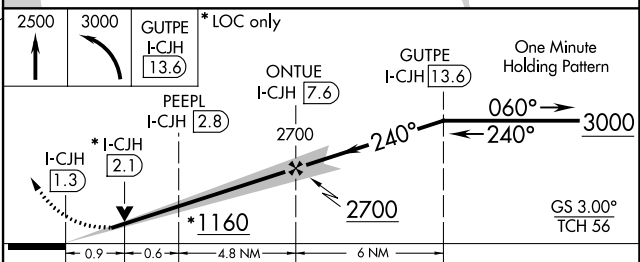
ELEV 629	<b>D</b>	TDZE 627
----------	----------	----------



REIL Rwy 6 **1**  
REIL Rwy 14  
HIRL Rwys 6-24 **1**  
HIRL Rwys 14-32

FAF to MAP 6.3 NM

Knots	60	90	120	150	180
Min:Sec	6:18	4:12	3:09	2:31	2:06



CATEGORY	A	B	C	D
S-ILS 24		827-½	200 (200-½)	
S-LOC 24		960-½	333 (400-½)	
<b>C</b> CIRCLING	1080-1 451 (500-1)	1180-1 551 (600-1)	1200-1½ 571 (600-1½)	1200-2 571 (600-2)

EC-1, 23 MAR 2023 to 20 APR 2023

EC-1, 23 MAR 2023 to 20 APR 2023