

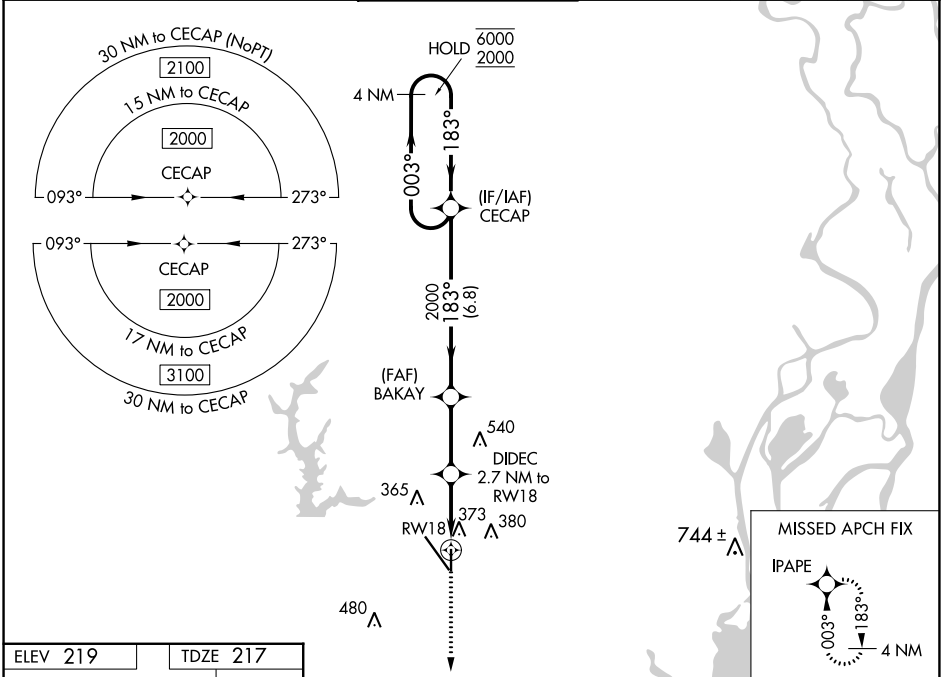
WAAS CH <b>78128</b> <b>W18A</b>	APP CRS <b>183°</b>	Rwy ldg TDZE Apt Elev	<b>4376</b> <b>217</b> <b>219</b>
--	------------------------	-----------------------------	---

# RNAV (GPS) RWY 18

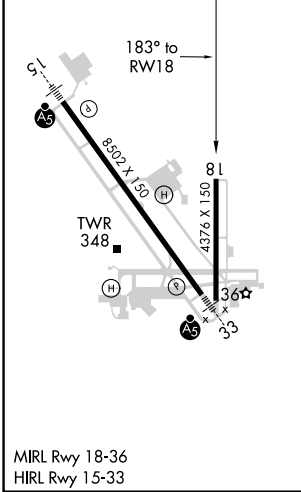
MOBILE RGNL (MOB)

RNP APCH - GPS.	MISSED APPROACH: Climb to 2000 direct IPAPE and hold.
▼ For uncompensated Baro-VNAV systems, LNAV/VNAV NA below -4°C or above 42°C. Rwy 18 helicopter visibility reduction below 3/4 SM NA.	

ATIS <b>124.75 257.85</b>	MOBILE APP CON ★ <b>118.5 269.3</b>	MOBILE TOWER ★ <b>118.3 (CTAF) 239.0</b>	GND CON <b>121.9 348.6</b>	CLNC DEL <b>119.85</b>	UNICOM <b>122.95</b>
------------------------------	--	---	-------------------------------	---------------------------	-------------------------



ELEV 219	TDZE 217
----------	----------



4 NM Holding Pattern	CECAP	BAKAY	DIDECE 2.7 NM to RWY18	1.3 NM to RWY18
6000 ← 003°	2000 → 183°	2000	1120	
GP 3.00°	TCH 45			
	6.8 NM	2.8 NM	1.4 NM	1.3
CATEGORY	A	B	C	D
LPV DA		508-1	291 (300-1)	
LNAV/VNAV DA		624-1 3/8	407 (500-1 3/8)	
LNAV MDA	640-1	423 (500-1)	640-1 1/4	423 (500-1 1/4)
CIRCLING	680-1	461 (500-1)	740-1 1/2	780-2
			521 (600-1 1/2)	561 (600-2)

SE-4, 23 MAR 2023 to 20 APR 2023

SE-4, 23 MAR 2023 to 20 APR 2023