

VOR/DME MSO <b>112.8</b> Chan <b>75</b>	APP CRS <b>339°</b>	Rwy Idg TDZE Apt Elev <b>N/A</b> <b>N/A</b> <b>3206</b>
---	------------------------	--

# VOR-B

MISSOULA MONTANA (MSO)

RADAR required for procedure entry at JEPSN. DME required.

MISSOULA TOWER ★ **118.4 (CTAF) 0 377.175**

GND CON **121.9**

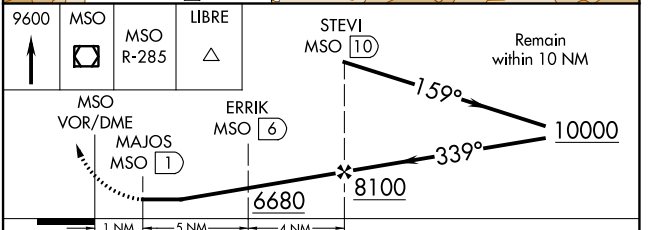
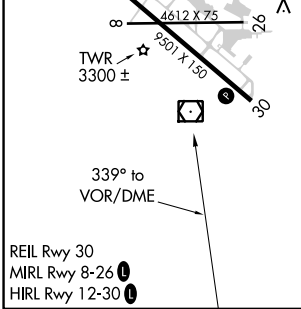
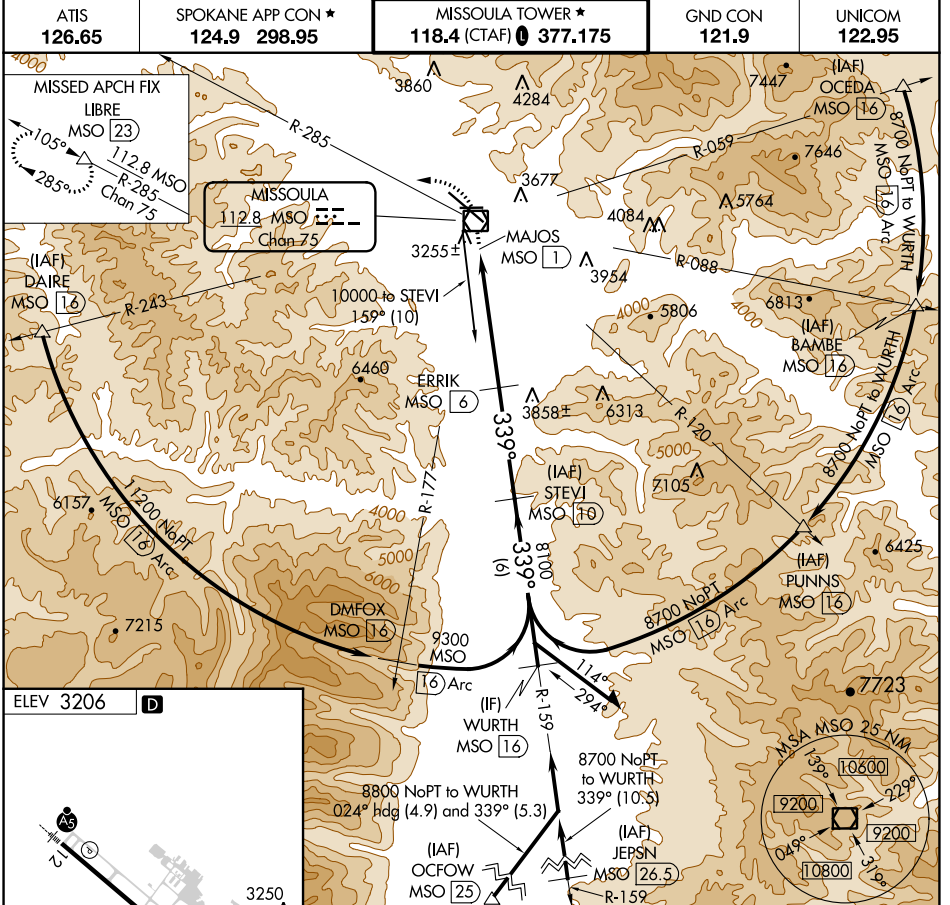
UNICOM **122.95**

ATIS **126.65**

SPOKANE APP CON ★ **124.9 298.95**

MISSOULA APCH FIX LIBRE MSO [23]  
112.8 MSO R-285 Chan 75

MISSED APPROACH: Climb to 9600 direct MSO VOR/DME and on MSO VOR/DME R-285 to LIBRE/MSO 23 DME and hold, continue climb-in-hold to 9600.



CATEGORY	A	B	C	D
☐ CIRCLING	4920-1¼ 1714 (1800-1¼)	4920-1½ 1714 (1800-1½)	4920-3 1714 (1800-3)	5160-3 1954 (2000-3)

NW-1, 23 MAR 2023 to 20 APR 2023

NW-1, 23 MAR 2023 to 20 APR 2023