

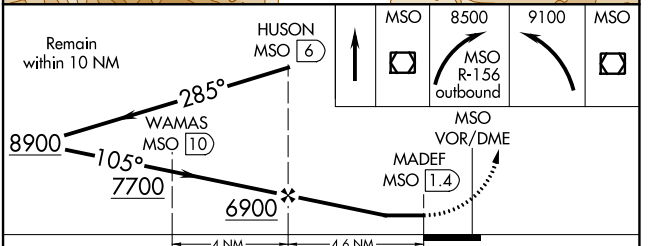
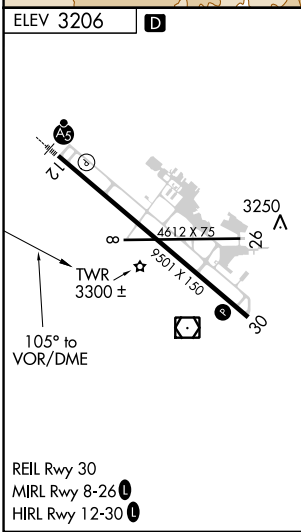
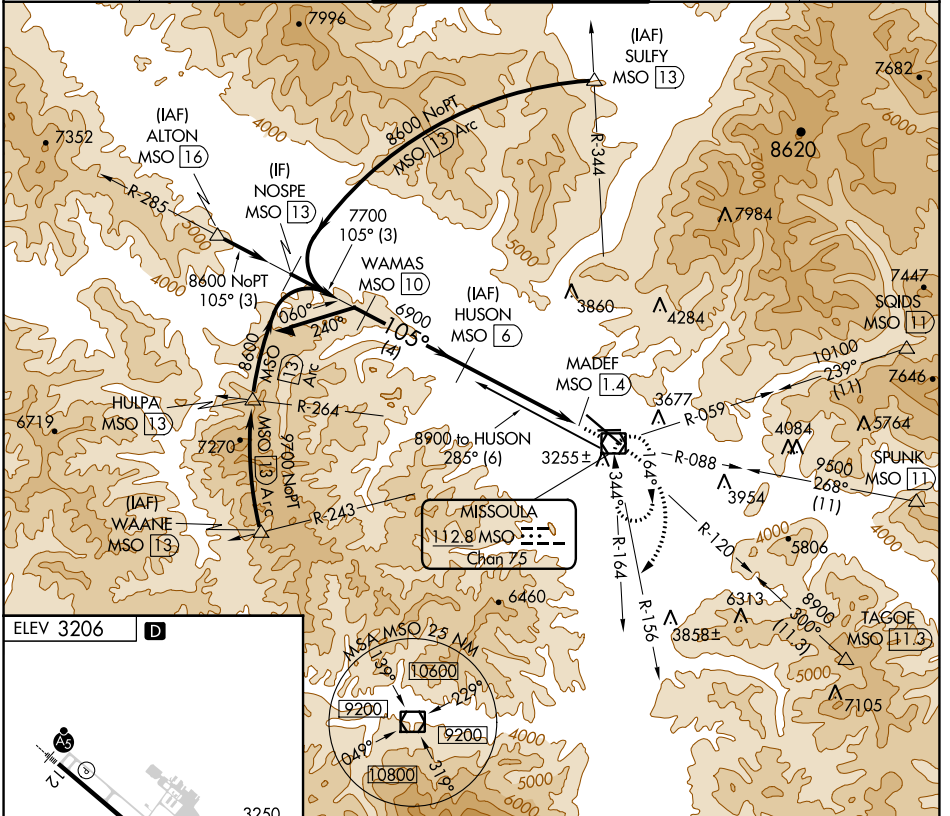
VOR/DME MSO <b>112.8</b> Chan <b>75</b>	APP CRS <b>105°</b>	Rwy Idg TDZE Apt Elev <b>N/A</b> <b>N/A</b> <b>3206</b>
---	------------------------	--

# VOR-A

MISSOULA MONTANA (MSO)

DME required.		<p>MISSED APPROACH: Climb direct MSO VOR/DME then climbing right turn to 8500 on MSO VOR/DME R-156 outbound then climbing left turn to 9100 direct to MSO VOR/DME and hold.</p>			
<p>▽ ▲ ❄️ -12°C</p>	<p>ATIS <b>126.65</b></p>	<p>SPOKANE APP CON * <b>124.9 298.95</b></p>	<p>MISSOULA TOWER * <b>118.4 (CTAF) 377.175</b></p>	<p>GND CON <b>121.9</b></p>	<p>UNICOM <b>122.95</b></p>

ATIS <b>126.65</b>	SPOKANE APP CON * <b>124.9 298.95</b>	MISSOULA TOWER * <b>118.4 (CTAF) 377.175</b>	GND CON <b>121.9</b>	UNICOM <b>122.95</b>
-----------------------	--	---	-------------------------	-------------------------



CATEGORY	A	B	C	D
<b>C</b> CIRCLING	5120-1¼ 1914 (2000-1¼)	5120-1½ 1914 (2000-1½)	5120-3 1914 (2000-3)	5160-3 1954 (2000-3)

NW-1, 23 MAR 2023 to 20 APR 2023

NW-1, 23 MAR 2023 to 20 APR 2023