

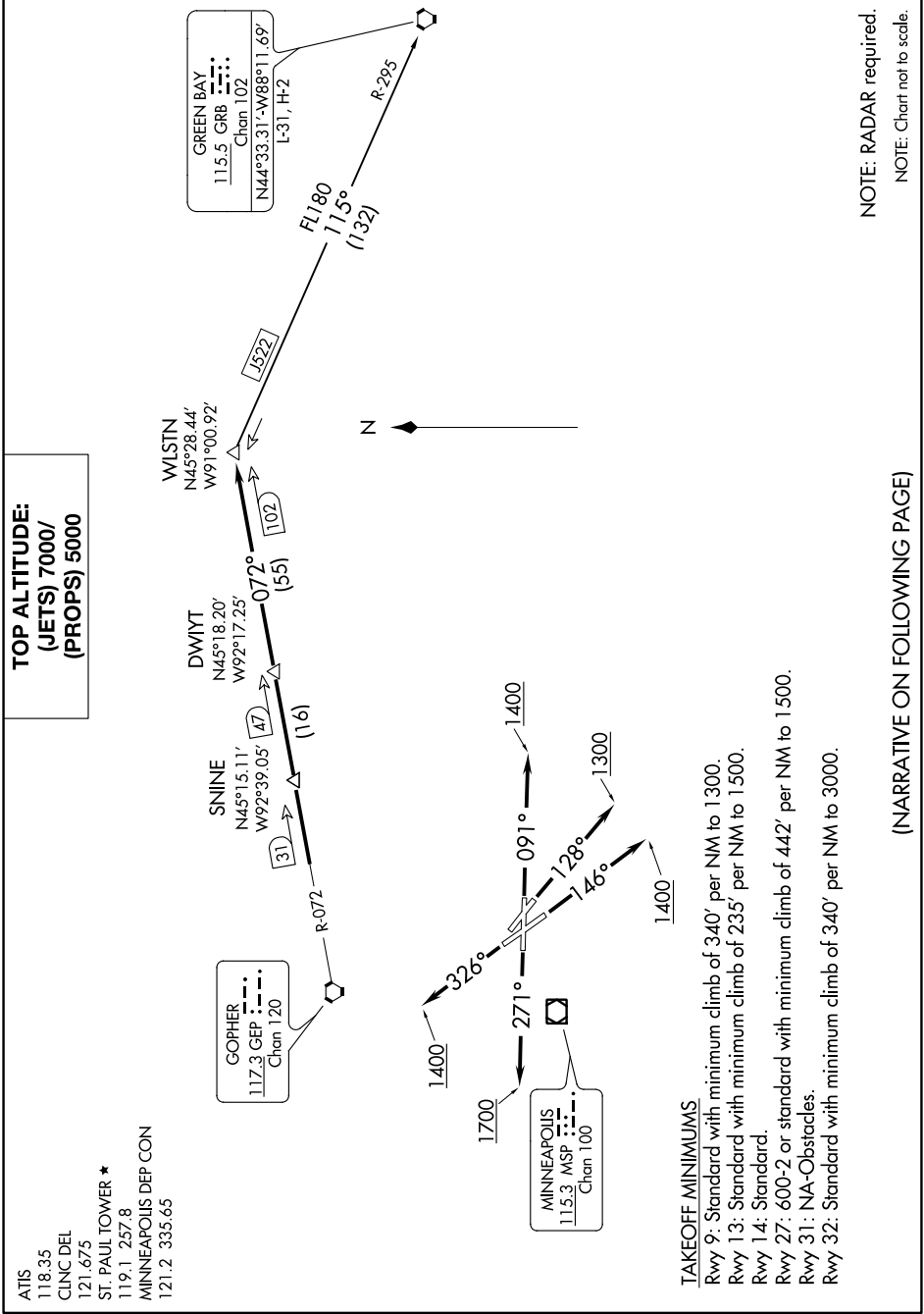
WLSTN SEVEN DEPARTURE

ST PAUL DOWNTOWN HOLMAN FLD (STP)
ST. PAUL, MINNESOTA

AL-263 (FAA)

21112

NC-1, 23 MAR 2023 to 20 APR 2023



**TOP ALTITUDE:
(JETS) 7000/
(PROPS) 5000**

ATIS 118.35
CLINC DEL 121.675
ST. PAUL TOWER * 119.1 257.8
MINNEAPOLIS DEP CON 121.2 335.65

TAKEOFF MINIMUMS
Rwy 9: Standard with minimum climb of 340' per NM to 1300.
Rwy 13: Standard with minimum climb of 235' per NM to 1500.
Rwy 14: Standard.
Rwy 27: 600-2 or standard with minimum climb of 442' per NM to 1500.
Rwy 31: NA-Obstacles.
Rwy 32: Standard with minimum climb of 340' per NM to 3000.

NOTE: RADAR required.
NOTE: Chart not to scale.

WLSTN SEVEN DEPARTURE
(WLSTN7.WLSTN) 17AUG17

ST. PAUL, MINNESOTA
ST PAUL DOWNTOWN HOLMAN FLD (STP)

(NARRATIVE ON FOLLOWING PAGE)

NC-1, 23 MAR 2023 to 20 APR 2023