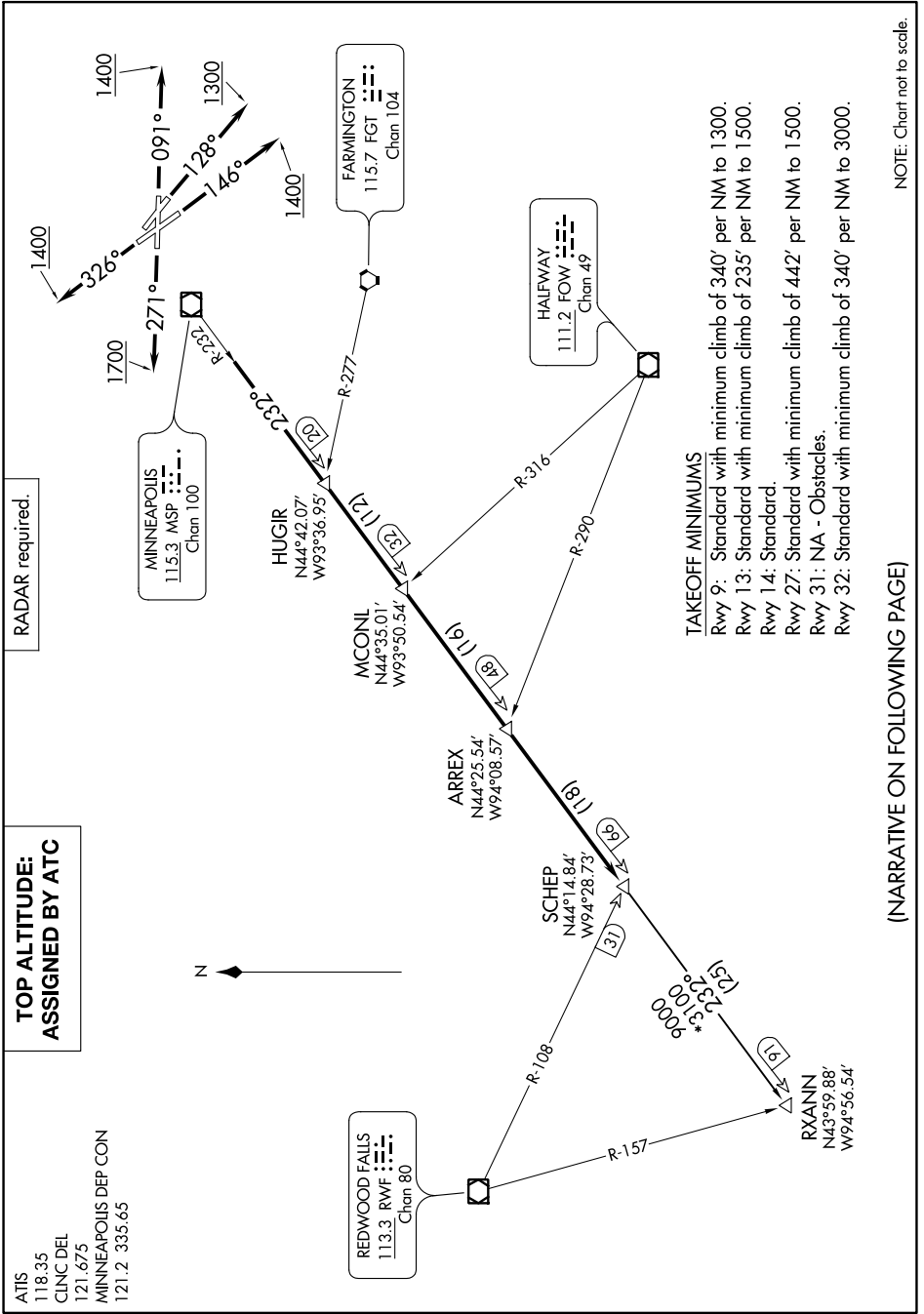


NC-1, 23 MAR 2023 to 20 APR 2023

RADAR required.

TOP ALTITUDE:
ASSIGNED BY ATC

ATIS
118.35
CLNCDEL
121.675
MINNEAPOLIS DEP CON
121.2 335.65



TAKEOFF MINIMUMS

- Rwy 9: Standard with minimum climb of 340' per NM to 1300.
- Rwy 13: Standard with minimum climb of 235' per NM to 1500.
- Rwy 14: Standard.
- Rwy 27: Standard with minimum climb of 442' per NM to 1500.
- Rwy 31: NA - Obstacles.
- Rwy 32: Standard with minimum climb of 340' per NM to 3000.

(NARRATIVE ON FOLLOWING PAGE)

NOTE: Chart not to scale.

NC-1, 23 MAR 2023 to 20 APR 2023