

LOC/DME I-BAO 111.5 Chan 52	APP CRS 326°	Rwy Idg TDZE Apt Elev	6109 704 705
--	------------------------	-----------------------------	---

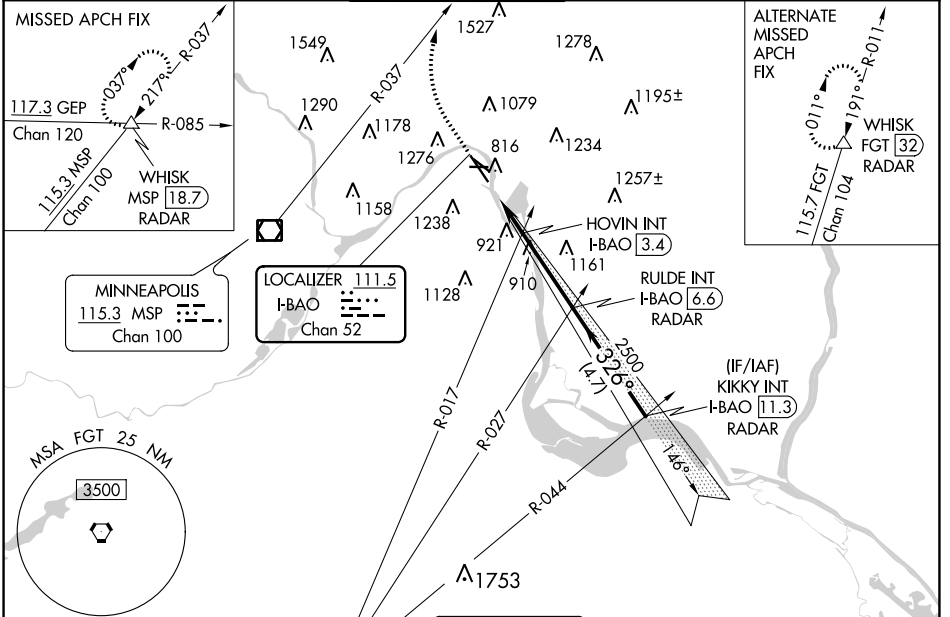
ILS or LOC RWY 32
ST PAUL DOWNTOWN HOLMAN FLD (STP)

DME or RADAR required. RADAR required for procedure entry.

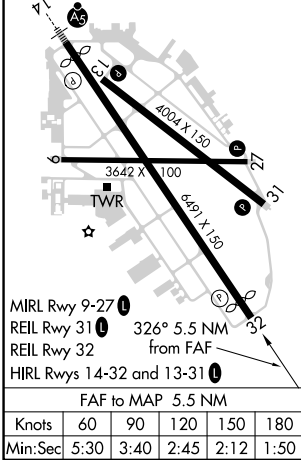
⚠ Rwy 32 helicopter visibility reduction below RVR 4000 NA. Inop table does not apply to S-ILS 32 all Cats and S-LOC all Cats. HOVIN FIX MINIMUMS: Inop table does not apply to Cats A/B. For inop ALS, increase Cats C/D visibility to 1 1/2 SM.

MISSED APPROACH: Climb to 1300 then climbing right turn to 4000 on heading 010° and MSP R-037 to WHISK INT/MSP 18.7 DME/RADAR and hold.

ATIS 118.35	MINNEAPOLIS APP CON 121.2 335.65	ST. PAUL TOWER * 119.1 (CTAF) 0 257.8	GND CON 121.675	CLNC DEL 121.675	UNICOM 122.95
-----------------------	--	---	---------------------------	----------------------------	-------------------------



ELEV 705	D	TDZE 704
----------	----------	----------



1300	4000	MSP R-037	WHISK	RULDE INT I-BAO [6.6] RADAR	KIKKY INT I-BAO [11.3] RADAR
*LOC only		I-BAO [1.1]	*I-BAO [2.6]	HOVIN INT I-BAO [3.4]	2500
		1460*	2500	326°	2500
		1.5 NM	0.8 NM	3.2 NM	4.7 NM
CATEGORY	A	B	C	D	
S-ILS 32	1011/50 307 (400-1)				
S-LOC 32	1460/55 756 (800-1)	1460/60 756 (800-1 1/4)	1460-2	756 (800-2)	
C CIRCLING	1580-1 1/4	875 (900-1 1/4)	1580-2 1/2	875 (900-2 1/2)	
HOVIN FIX MINIMUMS					
S-LOC 32	1220/55	516 (600-1)	1220-1 1/4	516 (600-1 1/4)	
C CIRCLING	1580-1 1/4	875 (900-1 1/4)	1580-2 1/2	875 (900-2 1/4)	

NC-1, 23 MAR 2023 to 20 APR 2023

NC-1, 23 MAR 2023 to 20 APR 2023