

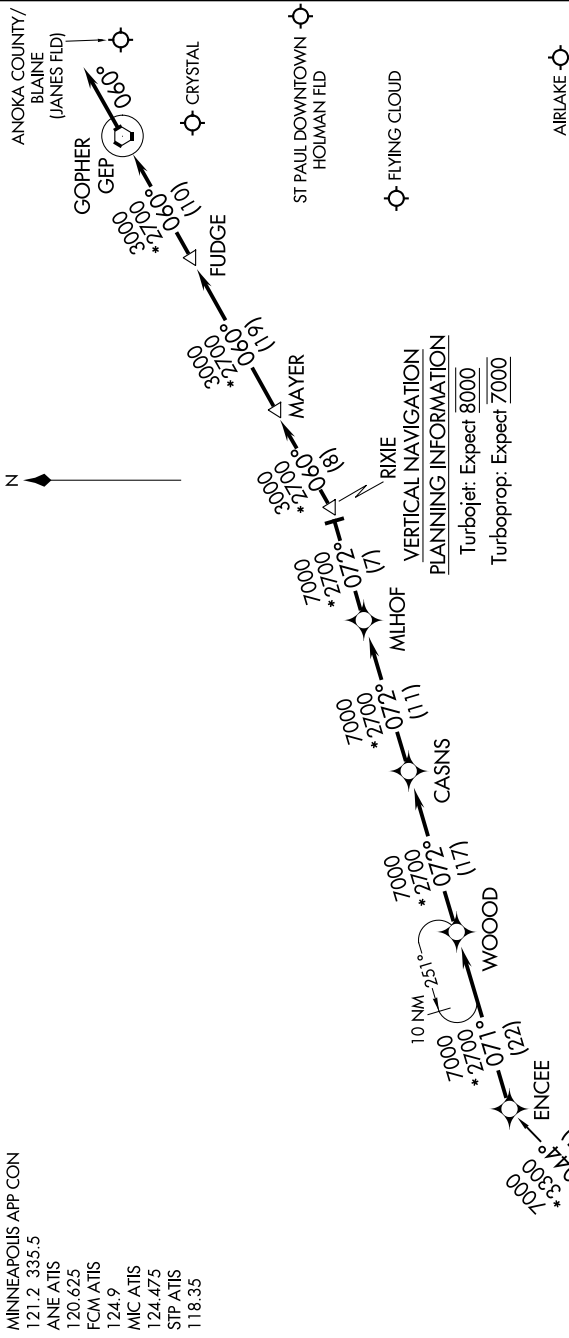
ENCEE TWO ARRIVAL (RNAV)

AL-263 (FAA)

MINNEAPOLIS-ST PAUL, MINNESOTA

NC-1, 23 MAR 2023 to 20 APR 2023

MINNEAPOLIS APP CON
 121.2 335.5
 ANE ATIS
 120.625
 FCM ATIS
 124.9
 MIC ATIS
 124.475
 STP ATIS
 118.35



NOTE: GPS required.

NOTE: For use by /E, /F, /G, and /R (RNP-2.0) equipped aircraft only.

ARRIVAL ROUTE DESCRIPTION

SIoux FALLS TRANSITION (FSD.ENCEE2)

From over ENCEE as depicted to RIXIE, thence as depicted to GEP VORTAC. Thence heading 060°, expect RADAR vectors to final approach course.

NOTE: Chart not to scale.

NC-1, 23 MAR 2023 to 20 APR 2023

ENCEE TWO ARRIVAL (RNAV)

MINNEAPOLIS-ST PAUL, MINNESOTA