

WAAS CH 81816 W28A	APP CRS 285°	Rwy Idg TDZE Apt Elev	7610 2858 2872
--	------------------------	-----------------------------	---

RNAV (GPS) RWY 28

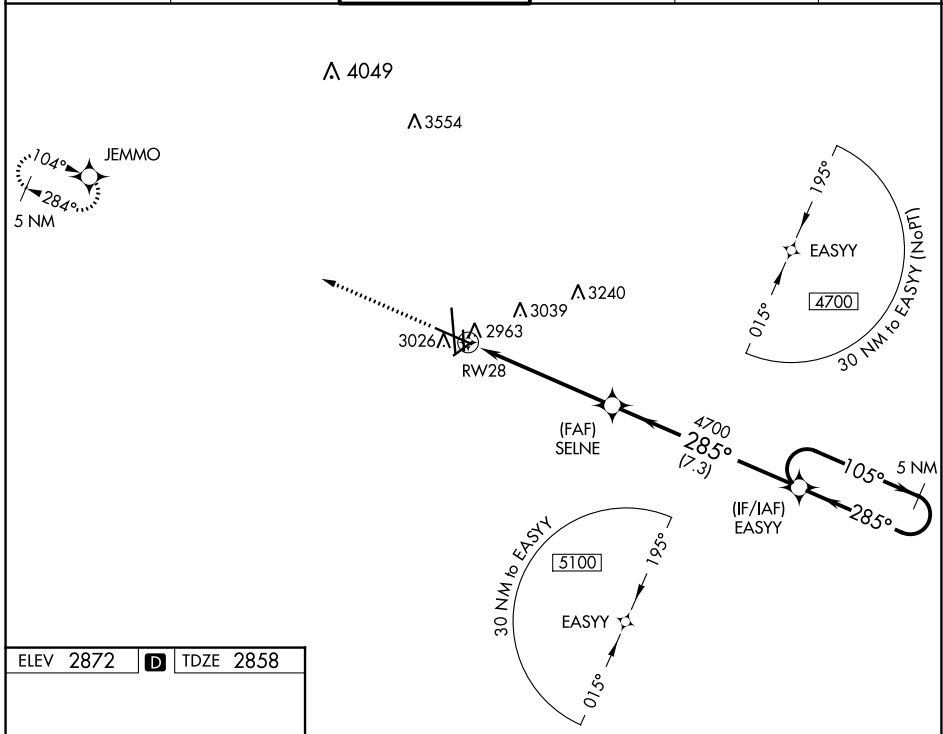
MIDLAND INTL AIR AND SPACE PORT (M.A.F.)

▽ For uncompensated Baro-VNAV systems, LNAV/VNAV NA below -11°C (13°F) or above 25°C (77°F). Circling Rwy 16L NA at night. DME/DME RNP-0.3 NA. Inop table does not apply to LPV all Cats.

MALS

MISSED APPROACH: Climb to 5000 direct JEMMO and hold.

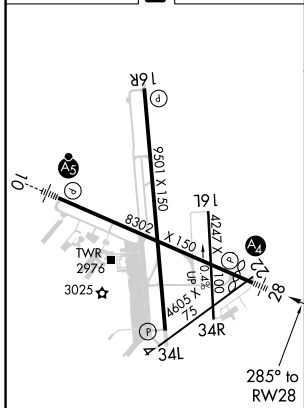
ATIS 126.8 235.975	MIDLAND APP CON * 124.6 290.4	MIDLAND TOWER * 118.7 (CTAF) 0273.45	GND CON 121.9 348.6	CLNC DEL 118.05 317.65	UNICOM 122.95
------------------------------	---	--	-------------------------------	----------------------------------	-------------------------



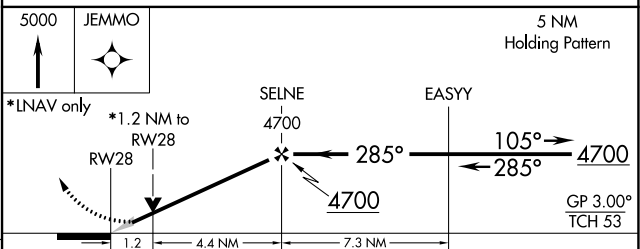
SC-3, 23 MAR 2023 to 20 APR 2023

SC-3, 23 MAR 2023 to 20 APR 2023

ELEV 2872	D	TDZE 2858
-----------	----------	-----------



REIL Rwy 34L
MIRL Rwy 4-22 and 16L-34R
HIRL Rwy 10-28 and 16R-34L



CATEGORY	A	B	C	D
LPV DA	DA	3058-3/4	200 (200-3/4)	
LNAV/VNAV DA	DA	3271-1 1/8	413 (500-1 1/8)	
LNAV MDA	3280-3/4	422 (500-3/4)	3280-1	422 (500-1)
CIRCLING	3440-1	568 (600-1)	3440-1 1/2 568 (600-1 1/2)	3520-2 648 (700-2)