

WAAS CH 53644 W30A	APP CRS 308°	Rwy Idg TDZE Apt Elev	6800 8 8
--	------------------------	-----------------------------	-------------------------------------

RNAV (GPS) RWY 30

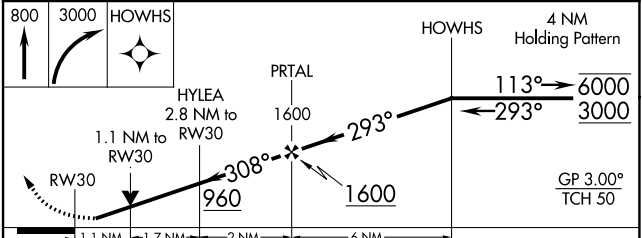
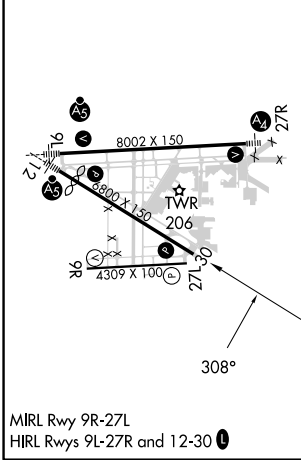
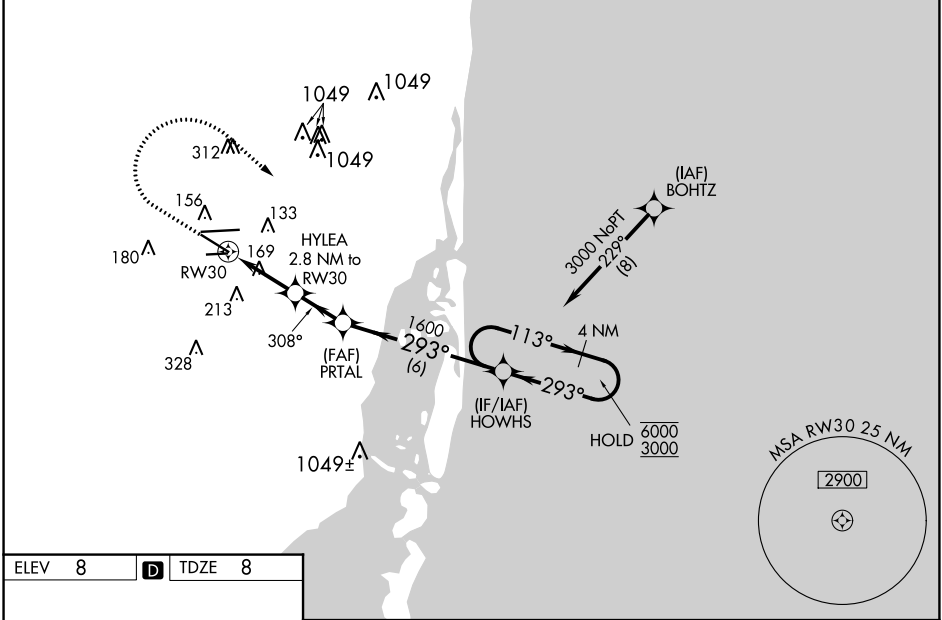
MIAMI-OPA LOCKA EXEC (OPF)

RNP APCH - GPS.

▼ Baro-VNAV and VDP NA when using Miami Intl altimeter setting.
▲ Rwy 30 helicopter visibility reduction below $\frac{3}{4}$ SM NA. For uncompensated Baro-VNAV systems, LNAV/VNAV NA below 7°C or above 54°C. When local altimeter setting not received, use Miami Intl altimeter setting; increase LPV DA to 276 feet and all visibilities $\frac{1}{8}$ SM; increase LNAV/VNAV DA to 438 feet and all visibilities $\frac{1}{8}$ SM; increase all MDAs 20 feet and LNAV visibility Cat C/D $\frac{1}{8}$ SM and Circling visibility Cat D $\frac{1}{4}$ SM.

MISSED APPROACH: Climb to 800 then climbing right turn to 3000 direct HOWHS and hold, continue climb-in-hold to 3000.

ATIS 125.9	MIAMI APP CON 128.6 306.975	OPA LOCKA TOWER ★ 134.675 (CTAF) 0	GND CON 120.025	CLNC DEL 119.2	GCO 119.45
----------------------	---------------------------------------	--	---------------------------	--------------------------	----------------------



CATEGORY	A	B	C	D
LPV DA	258- $\frac{3}{4}$		250 (300- $\frac{3}{4}$)	
LNAV/VNAV DA	420- $\frac{1}{8}$		412 (500- $\frac{1}{8}$)	
LNAV MDA	420-1	412 (500-1)	420- $\frac{1}{8}$	412 (500- $\frac{1}{8}$)
C CIRCLING	480-1 472 (500-1)	520-1 512 (600-1)	620- $\frac{1}{4}$ 612 (700- $\frac{1}{4}$)	740- $\frac{1}{4}$ 732 (800- $\frac{1}{4}$)

SE-3, 23 MAR 2023 to 20 APR 2023

SE-3, 23 MAR 2023 to 20 APR 2023