

(HURCN3.HURCN) 22139

AL-256 (FAA)

MIAMI-OPA LOCKA EXEC (OPF)
MIAMI, FLORIDA

HURCN THREE DEPARTURE (RNAV)

RNAV-1 DME/DME/IRU or GPS.

RADAR required.

**TOP ALTITUDE:
ASSIGNED BY ATC**

ATIS
125.9
CLNC DEL
119.2
GND CON
120.025
OPA LOCKA TOWER ★
134.675 (CTAF)
MIAMI DEP CON
119.45 290.325

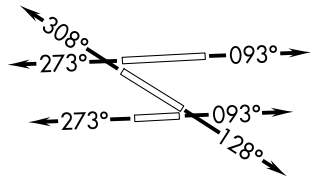
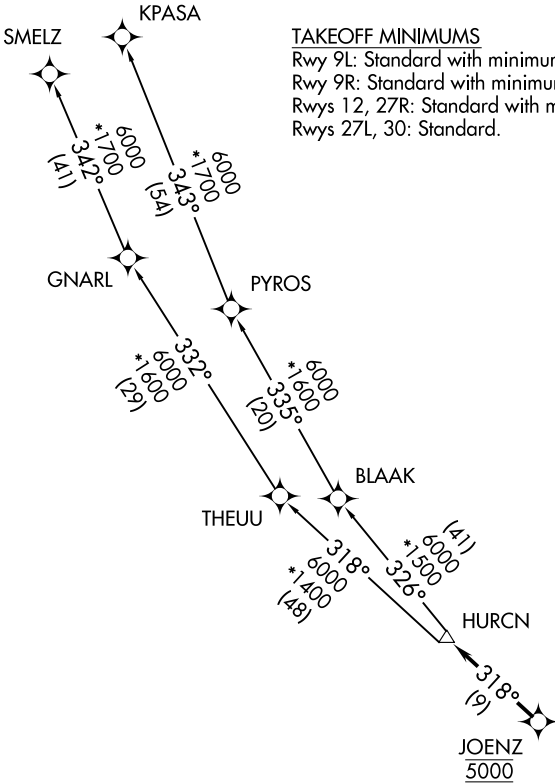
TAKEOFF MINIMUMS

Rwy 9L: Standard with minimum climb of 500' per NM to 1000.

Rwy 9R: Standard with minimum climb of 500' per NM to 700.

Rwys 12, 27R: Standard with minimum climb of 500' per NM to 600.

Rwys 27L, 30: Standard.



NOTE: Jet aircraft only.
NOTE: Accelerate to 250K, if unable, advise ATC.

NOTE: Chart not to scale.

(NARRATIVE ON FOLLOWING PAGE)

SE-3, 23 MAR 2023 to 20 APR 2023

SE-3, 23 MAR 2023 to 20 APR 2023

HURCN THREE DEPARTURE (RNAV)
(HURCN3.HURCN) 19MAY22

MIAMI, FLORIDA
MIAMI-OPA LOCKA EXEC (OPF)