

# FOLZZ TWO DEPARTURE (RNAV)

ATIS  
125.9  
CLNC DEL  
119.2  
GND CON  
120.025  
OPA LOCKA TOWER ★  
134.675 (CTAF)  
MIAMI DEP CON  
119.45 290.325

**TOP ALTITUDE:  
ASSIGNED BY ATC**

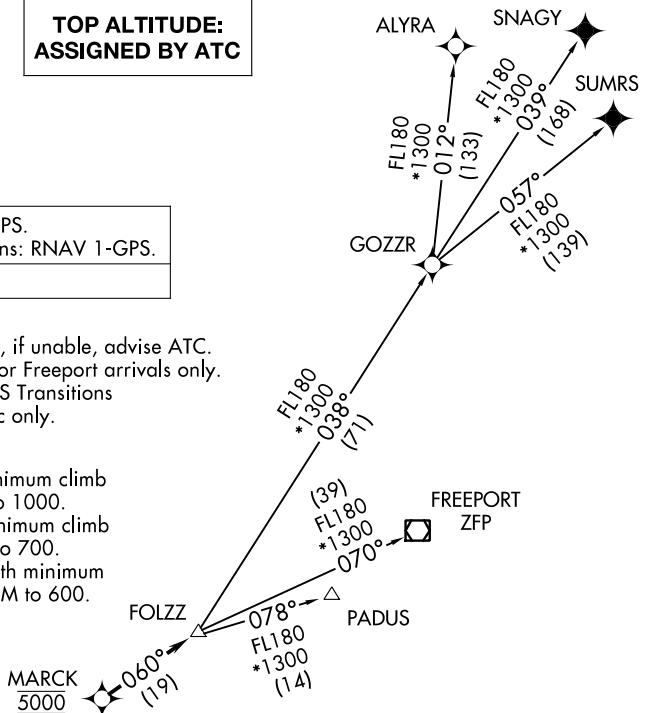
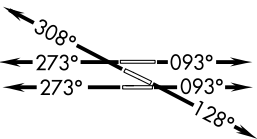
RNAV-1 DME/DME/IRU or GPS.  
SNAGY and SUMRS Transitions: RNAV 1-GPS.

RADAR required.

NOTE: Jet aircraft only.  
NOTE: Accelerate to 250K, if unable, advise ATC.  
NOTE: PADUS Transition for Freeport arrivals only.  
NOTE: SNAGY and SUMRS Transitions for European traffic only.

### TAKEOFF MINIMUMS

- Rwy 9L: Standard with minimum climb of 500' per NM to 1000.
- Rwy 9R: Standard with minimum climb of 500' per NM to 700.
- Rwy 12, 27R: Standard with minimum climb 500' per NM to 600.
- Rwy 27L, 30: Standard.



NOTE: Chart not to scale.

### DEPARTURE ROUTE DESCRIPTION

**TAKEOFF RUNWAYS 9L/R:** Climb on heading 093° or as assigned for RADAR vectors to cross MARCK at 5000, thence. . .

**TAKEOFF RUNWAY 12:** Climb on heading 128° or as assigned for RADAR vectors to cross MARCK at 5000, thence. . .

**TAKEOFF RUNWAYS 27L/R:** Climb on heading 273° or as assigned for RADAR vectors to cross MARCK at 5000, thence. . .

**TAKEOFF RUNWAY 30:** Climb on heading 308° or as assigned for RADAR vectors to cross MARCK at 5000, thence. . .

. . . on track 060° to FOLZZ, then on transition. Maintain ATC assigned altitude, expect clearance to filed altitude within 10 minutes after departure.

- ALYRA TRANSITION (FOLZZ2.ALYRA)
- FREEPORT TRANSITION (FOLZZ2.ZFP)
- GOZZR TRANSITION (FOLZZ2.GOZZR)
- PADUS TRANSITION (FOLZZ2.PADUS)
- SNAGY TRANSITION (FOLZZ2.SNAGY)
- SUMRS TRANSITION (FOLZZ2.SUMRS)

SE-3, 23 MAR 2023 to 20 APR 2023

SE-3, 23 MAR 2023 to 20 APR 2023