

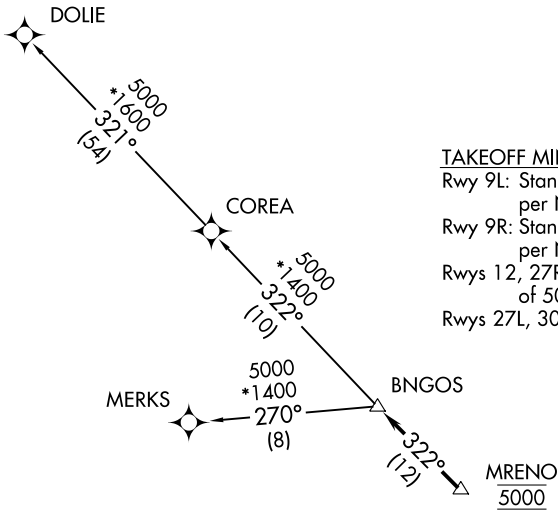
BNGOS THREE DEPARTURE (RNAV)

RNAV-1 DME/DME/IRU or GPS.

RADAR required.

**TOP ALTITUDE:
ASSIGNED BY ATC**

ATIS 125.9
CLNC DEL 119.2
GND CON 120.025
OPA LOCKA TOWER ★ 134.675 (CTAF)
MIAMI DEP CON 119.45 290.325



TAKEOFF MINIMUMS

Rwy 9L: Standard with minimum climb of 500' per NM to 1000.

Rwy 9R: Standard with minimum climb of 500' per NM to 700.

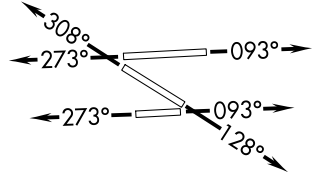
Rwys 12, 27R: Standard with minimum climb of 500' per NM to 600.

Rwys 27L, 30: Standard.

NOTE: Jet aircraft only.

NOTE: Accelerate to 250K, if unable, advise ATC.

NOTE: MERKS Transition ATC assigned only except aircraft landing: MKY, RSW, APF, PGD and FMY.



NOTE: Chart not to scale.



DEPARTURE ROUTE DESCRIPTION

TAKEOFF RUNWAYS 9L/R: Climb on heading 093° or as assigned for RADAR vectors to cross MRENO at 5000, thence. . .

TAKEOFF RUNWAY 12: Climb on heading 128° or as assigned for RADAR vectors to cross MRENO at 5000, thence. . .

TAKEOFF RUNWAYS 27L/R: Climb on heading 273° or as assigned for RADAR vectors to cross MRENO at 5000, thence. . .

TAKEOFF RUNWAY 30: Climb on heading 308° or as assigned for RADAR vectors to cross MRENO at 5000, thence. . .

. . . on track 322° to BNGOS, then on transition, maintain ATC assigned altitude, expect clearance to filed altitude within 10 minutes after departure.

COREA TRANSITION (BNGOS3.COREA)

DOLIE TRANSITION (BNGOS3.DOLIE)

MERKS TRANSITION (BNGOS3.MERKS)