

APP CRS 143°	Rwy Idg 8800
TDZE 1303	Apt Elev 1335


RNAV (RNP) Z RWY 14

ROGUE VALLEY INTL-MEDFORD (MFR)

RNP AR APCH-GPS.

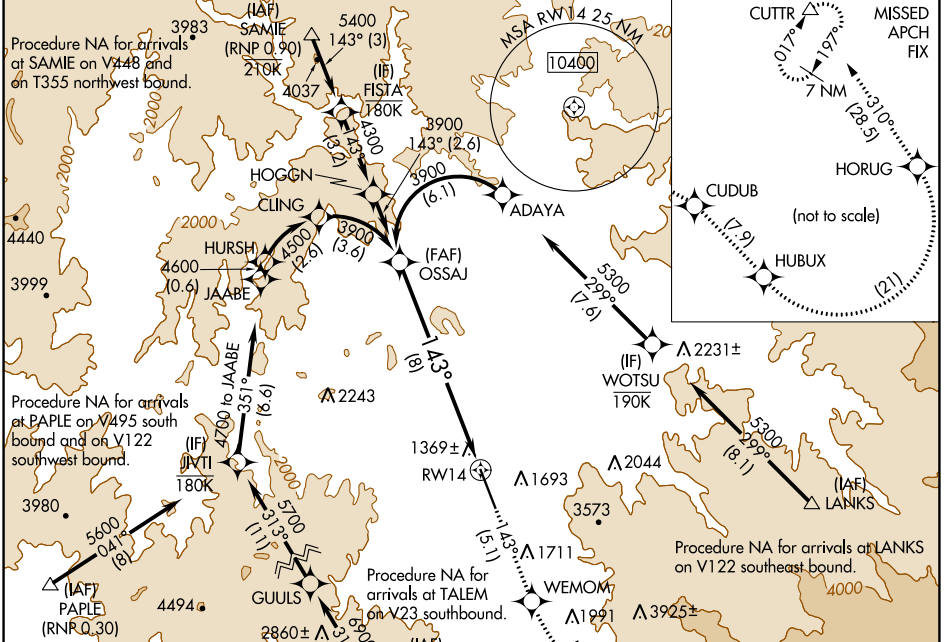
For uncompensated Baro-VNAV systems, procedure NA below -6°C or above 54°C. For inop ALS, increase RNP 0.30 all Cats visibility to 2 SM.

MALSR

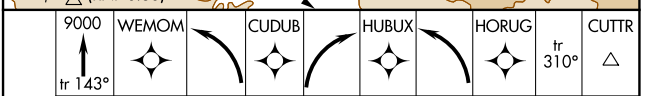
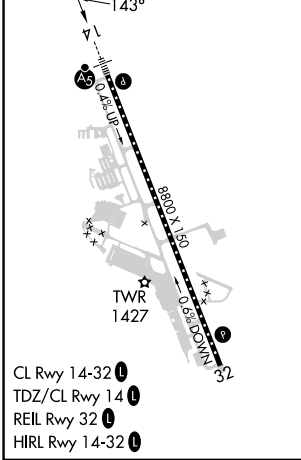


MISSED APPROACH: Climb to 9000 on track 143° to WEMOM, left turn to CUDUB, right turn HUBUX, left turn HORUG, then on track 310° to CUTTR and hold. * Missed approach requires minimum climb of 244 feet per NM to 5000.

ATIS 127.25	CASCADE APP CON * 124.3 379.9	MEDFORD TOWER * 119.4 (CTAF) 0 257.8	GND CON 121.8	UNICOM 122.95
-----------------------	---	--	-------------------------	-------------------------



ELEV 1335	TDZE 1303
------------------	------------------



OSAJ 3900

GP 3.00° TCH 58

8 NM

VGSI and RNAV glidepath not coincident (VGSI Angle 3.00/TCH 73). See planview for multiple IF locations.

CATEGORY	A	B	C	D
RNP 0.30 DA*	1759/45 456 (500-7%)			
RNP 0.30 DA	2049-1¾ 746 (800-1¾)			

AUTHORIZATION REQUIRED

NW-1, 23 MAR 2023 to 20 APR 2023

NW-1, 23 MAR 2023 to 20 APR 2023