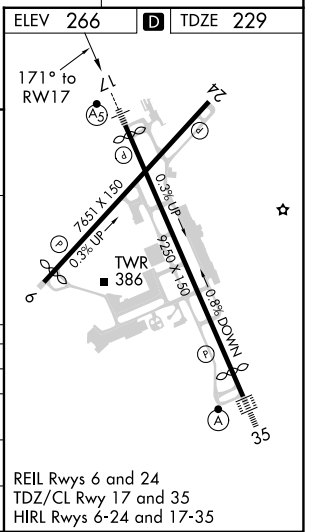
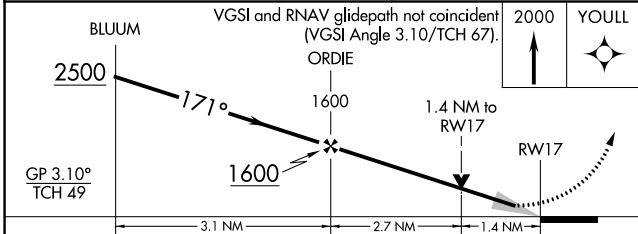
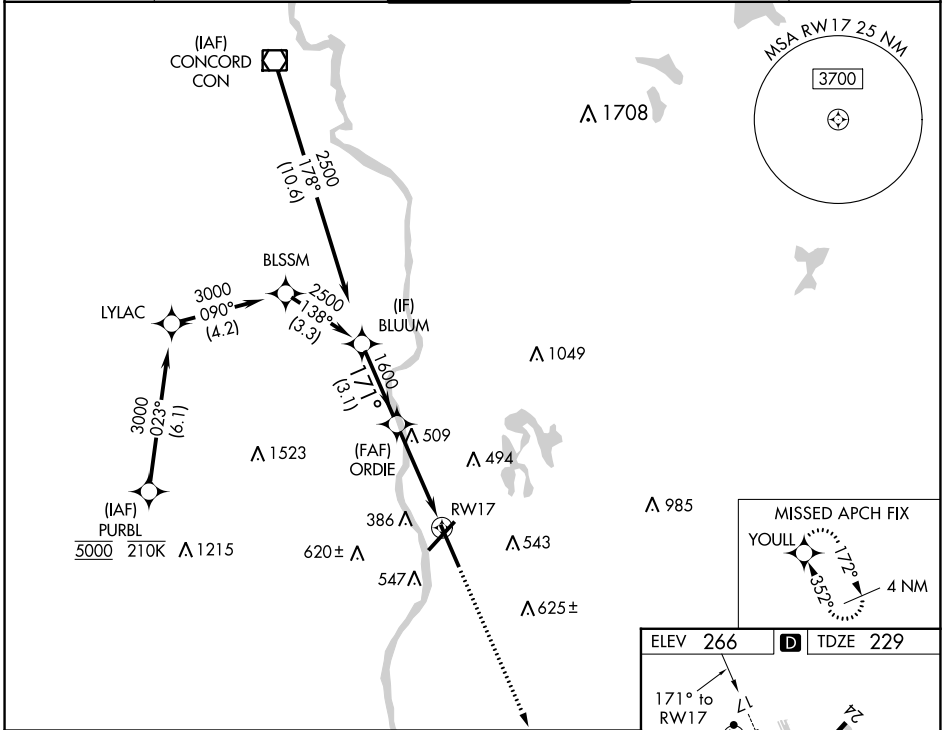


WAAS CH 93807 W17A	APP CRS 171°	Rwy Idg 8914 TDZE 229 Apt Elev 266
--	------------------------	---

RNAV (GPS) Y RWY 17

MANCHESTER BOSTON RGNL (MHT)

RNP APCH-GPS.		MALSR		MISSED APPROACH: Climb to 2000 direct YOUULL and hold.	
▼ For uncompensated Baro-VNAV systems, LNAV/VNAV NA below -19°C or above 54°C. ▲ For inop ALS, increase LNAV CAT A/B visibility to RVR 5500.					
ATIS 119.55	BOSTON APP CON 124.9 269.075	MANCHESTER TOWER 121.3 239.025	GND CON 121.9	CLNC DEL 135.9	



CATEGORY	A	B	C	D
LPV DA		429/18	200 (200-½)	
LNAV/VNAV DA		760/55	531 (500-1)	
LNAV MDA	760/24	531 (500-½)	760/55	531 (500-1)
CIRCLING	880-1	614 (700-1)	980-2 714 (800-2)	1100-2¾ 834 (900-2¾)

NE-1, 23 MAR 2023 to 20 APR 2023

NE-1, 23 MAR 2023 to 20 APR 2023