

APP CRS	Rwy Idg	<b>7650</b>
<b>352°</b>	TDZE	<b>265</b>
	Apf Elev	<b>266</b>

# RNAV (RNP) Z RWY 35

MANCHESTER BOSTON RGNL (MHT)

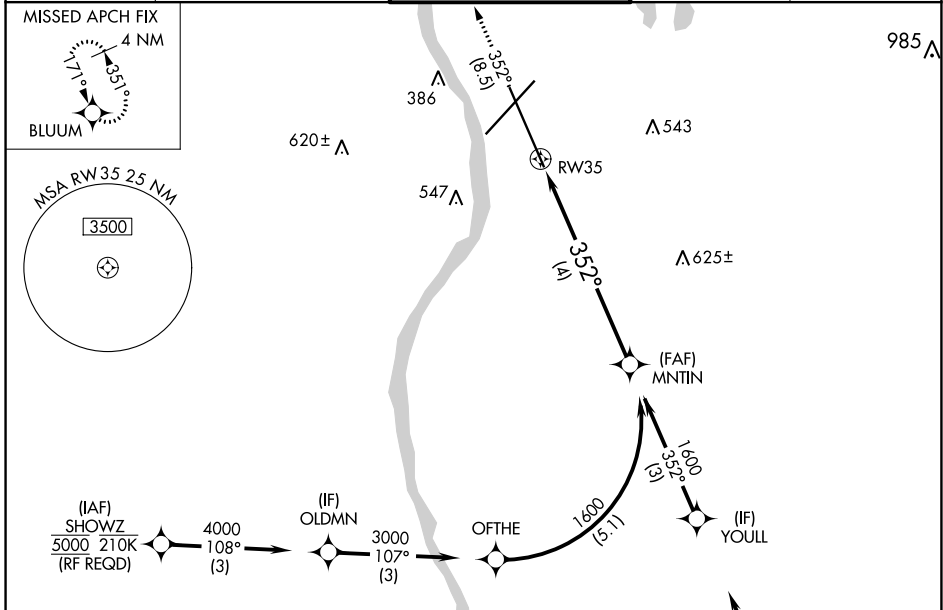
**▼** For uncompensated Baro-VNAV systems, procedure NA below -18°C (0°F) or above 54°C (130°F). GPS required. When local altimeter not received, procedure NA. For inop ALSF-2, increase RNP 0.20 all Cats visibility to 1 3/8 SM and RNP 0.30 all Cats visibility to 1 3/4 SM.

ALFS-2

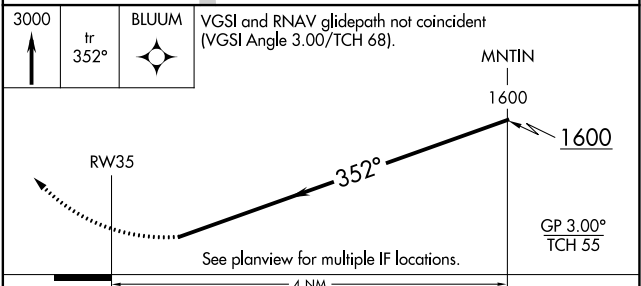
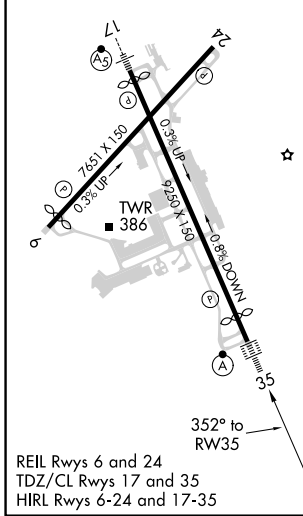


MISSED APPROACH: Climb to 3000 on track 352° to BLUUM and hold, continue climb-in-hold to 3000.

ATIS	BOSTON APP CON	MANCHESTER TOWER	GND CON	CLNC DEL
<b>119.55</b>	<b>124.9 269.075</b>	<b>121.3 239.025</b>	<b>121.9</b>	<b>135.9</b>



ELEV 266	<b>D</b>	TDZE 265
----------	----------	----------



CATEGORY	A	B	C	D
RNP 0.20 DA		755/60	490 (500-1 1/4)	
RNP 0.30 DA		802-1 3/8	537 (600-1 3/8)	

## AUTHORIZATION REQUIRED

NE-1, 23 MAR 2023 to 20 APR 2023

NE-1, 23 MAR 2023 to 20 APR 2023