

LOC IDLT 111.9	APP CRS 264°	Rwy Idg 8003
		TDZE 3255
		Apt Elev 3282

ILS or LOC RWY 26

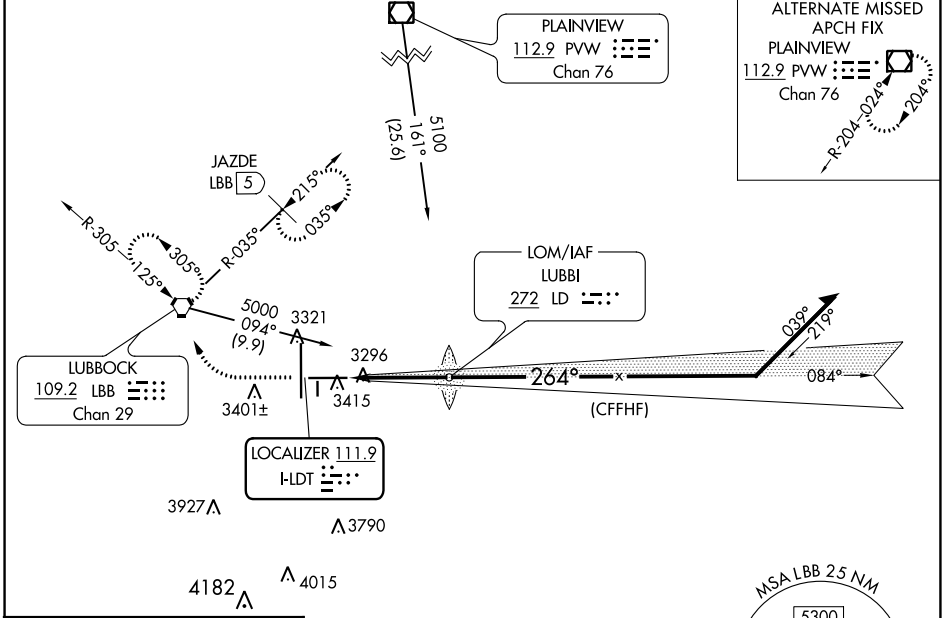
LUBBOCK PRESTON SMITH INTL (LBB)

▽ For inop MALSR, increase S-ILS 26 Cat E visibility to RVR 4000 and increase S-LOC 26 Cat C/D/E visibility to RVR 4500.
△ ASR #RVR 1800 authorized with use of FD or AP or HUD to DA.

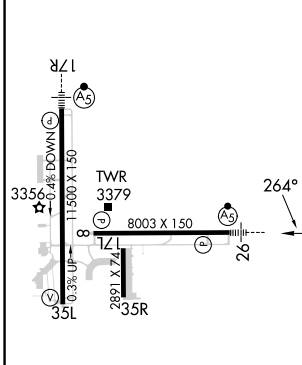
MALSR
ASR

MISSED APPROACH: Climb to 3800 then climbing right turn to 4800 direct LBB VORTAC and hold (TACAN aircraft climb to 3800 then climbing right turn to 5100 on heading 300° and on LBB VORTAC R-035 to JAZDE/LBB 5 DME and hold northeast left turn 215° inbound).

ATIS 125.3 270.275	LUBBOCK APP CON 119.2 351.8	LUBBOCK TOWER 120.5 239.3	GND CON 121.9 348.6	CLNC DEL 125.8 281.55
------------------------------	---------------------------------------	-------------------------------------	-------------------------------	---------------------------------



ELEV 3282	D	TDZE 3255
-----------	----------	-----------



REIL Rwy 8	3350	11500 X 150	8003 X 150	2881 X 74	35R
HIRL Rwy 8-26 and 17R-35L	3379				
FAF to MAP 3.7 NM					
Knots	60	90	120	150	180
Min:Sec	3:42	2:28	1:51	1:29	1:14
<input checked="" type="checkbox"/> CIRCLING	3720-1 438 (500-1)	3740-1 458 (500-1)	3880-1½ 598 (600-1½)	3940-2 658 (700-2)	4100-3 818 (900-3)

SC-2, 23 MAR 2023 to 20 APR 2023

SC-2, 23 MAR 2023 to 20 APR 2023