


LOC/DME I-LBB <b>111.7</b> Chan <b>54</b>	APP CRS <b>174°</b>	Rwy Idg <b>11500</b> TDZE <b>3282</b> Apt Elev <b>3282</b>
---	------------------------	--

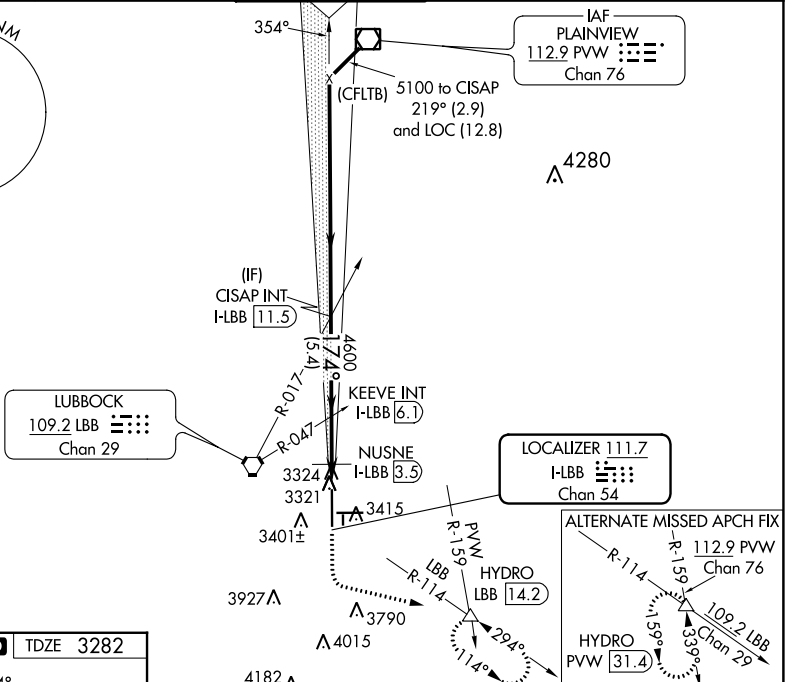
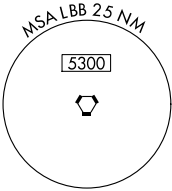
# ILS or LOC RWY 17R

LUBBOCK PRESTON SMITH INTL (LBB)

**⚠** For inop MALS, increase S-ILS 17R Cat E visibility to RVR 4000, S-LOC 17R Cat C/D/E visibility to 1½ mile, and NUSNE DME Fix Minimums, increase S-LOC 17R Cat C/D/E visibility to RVR 5000.  
#RVR 1800 authorized with the use of FD or AP or HUD to DA.

**MALS**  MISSED APPROACH: Climb to 3700 then climbing left turn to 6000 via LBB VORTAC R-114 to HYDRO INT/LBB 14.2 DME and hold, continue climb-in-hold to 6000.

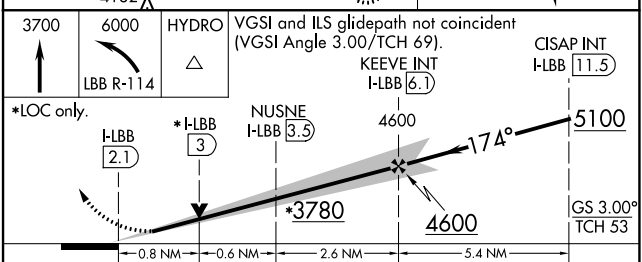
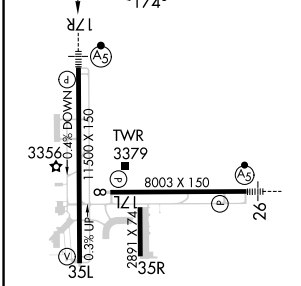
ATIS <b>125.3 270.275</b>	LUBBOCK APP CON <b>119.2 351.8</b>	LUBBOCK TOWER <b>120.5 239.3</b>	GND CON <b>121.9 348.6</b>	CLNC DEL <b>125.8 281.55</b>
------------------------------	---------------------------------------	-------------------------------------	-------------------------------	---------------------------------



SC-2, 23 MAR 2023 to 20 APR 2023

SC-2, 23 MAR 2023 to 20 APR 2023

ELEV <b>3282</b>	<b>D</b>	TDZE <b>3282</b>
------------------	----------	------------------



REIL Rwy 8 HIRL Rwys 8-26 and 17R-35L FAF to MAP 4 NM	3700	6000	HYDRO	VGSi and ILS glidepath not coincident (VGSi Angle 3.00/TCH 69).		CISAP INT I-LBB (11.5)	
	<b>*LOC only.</b>	<b>*H-LBB 3</b>	NUSNE I-LBB (3.5)	4600	5100	GS 3.00° TCH 53	
	I-LBB (2.1)	I-LBB (3)	I-LBB (3.5)	4600	5100		
				0.8 NM	0.6 NM	2.6 NM	5.4 NM
	CATEGORY	A	B	C	D	E	
	S-ILS 17R	#3482/24 200 (200-½)					
	S-LOC 17R	3780/24	498 (500-½)	3780/50	498 (500-1)		
	<b>C</b> CIRCLING	3780-1	498 (500-1)	3880-1½ 598 (600-1½)	3940-2 658 (700-2)	4100-3 818 (900-3)	
		NUSNE FIX MINIMUMS (DME REQUIRED)					
	S-LOC 17R	3620/24	338 (400-½)	3620/26	338 (400-½)		
	<b>C</b> CIRCLING	3720-1 438 (500-1)	3740-1 458 (500-1)	3880-1½ 598 (600-1½)	3940-2 658 (700-2)	4100-3 818 (900-3)	

LUBBOCK, TEXAS  
Amdt 18 05JAN17

33°40'N-101°49'W

# LUBBOCK PRESTON SMITH INTL (LBB) ILS or LOC RWY 17R