

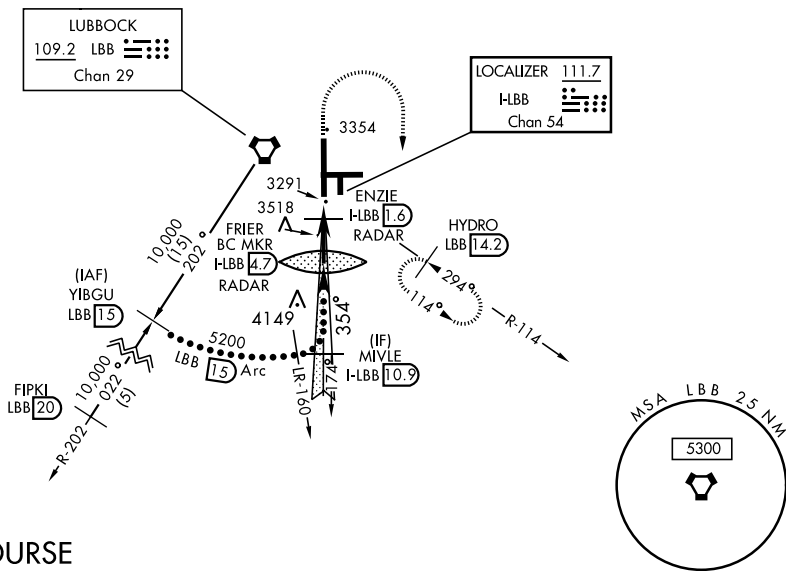
LUBBOCK, TEXAS

# HI-LOC/DME BC RWY 35L

LOC I-LBB <b>111.7</b> Chan <b>54</b>	APCH CRS <b>354°</b>	Rwy Idg <b>11,500</b> TDZE <b>3254</b> Arpt Elev <b>3282</b>	AL-241 [USAF]	LUBBOCK PRESTON SMITH INTL (KLBB)
---	-------------------------	--	---------------	-----------------------------------

**V** Use I-LBB DME when on Localizer course.  
**A** MISSED APPROACH: Climb to 4000, then climbing right turn to 5200 on Hdg 170° and on LBB VORTAC R-114 to HYDRO INT/LBB 14.2 DME and hold.

ATIS <b>125.3 270.275</b>	APP CON <b>119.2 351.8</b>	TOWER <b>120.5 239.3</b>	GND CON <b>121.9 348.6</b>	CLNC DEL <b>125.8 281.55</b>
------------------------------	-------------------------------	-----------------------------	-------------------------------	---------------------------------



## BACKCOURSE

EMERG SAFE ALT 100 NM 7300

	ELEV 3282	TDZE 3254	
	YIBGU LBB (15) 10,000 Intcp LOC MIVLE I-LBB (0.9) 5200 FRIER BC MKR I-LBB (4.7) 4800 ENZIE RADAR I-LBB (1.6) 3820 NOLOE I-LBB (0.3) 4000 HYDRO LBB R-114 (14.2) 5200	HIRL Rwy 8-26, 17R-35L REIL Rwy 8	
CATEGORY	C	D	E
S-35L	3560-7/8	306 (300-7/8)	
CIRCLING	3880-1 1/2 598 (600-1 1/2)	3940-2 658 (700-2)	4100-3 818 (900-3)

LUBBOCK, TEXAS  
Orig C 21MAY20

33°40'N-101°49'W

LUBBOCK PRESTON SMITH INTL (KLBB)

# HI-LOC/DME BC RWY 35L

SC-2, 23 MAR 2023 to 20 APR 2023

SC-2, 23 MAR 2023 to 20 APR 2023