

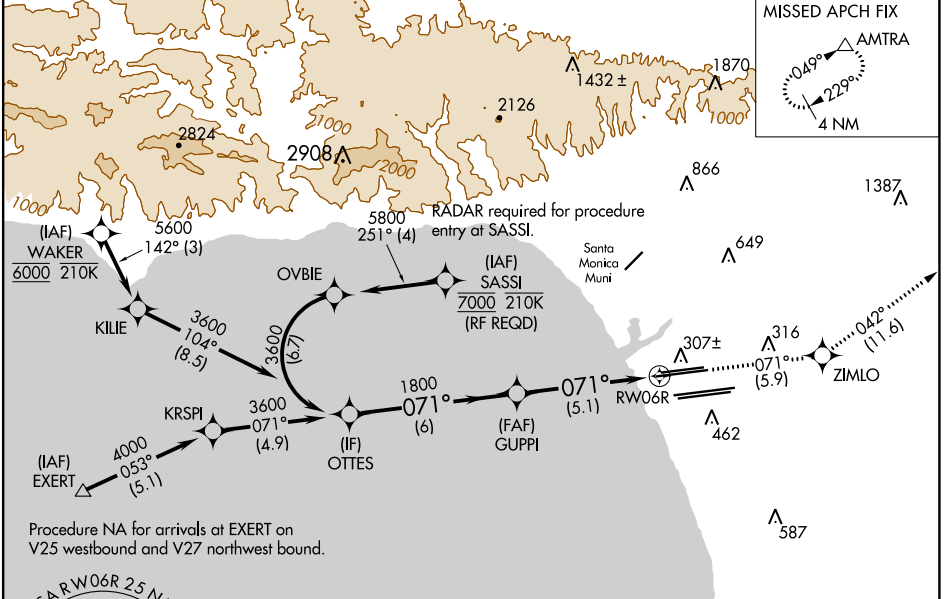
APP CRS	Rwy Idg	9748
071°	TDZE	116
	Apt Elev	128

RNAV (RNP) Z RWY 6R

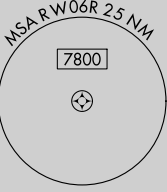
LOS ANGELES INTL (LAX)

<p>▼ For uncompensated Baro-VNAV systems, procedure NA below 5°C (41°F) or above 54°C (130°F). GPS required. Simultaneous approach authorized. For inop ALS, increase RNP 0.30 all Cats visibility to RVR 6000.</p>	<p>MALSR</p>	<p>MISSED APPROACH: Climb to 3000 on track 071° to ZIMLO and on track 042° to AMTRA and hold.</p>

D-ATIS	SOCAL APP CON		LOS ANGELES TOWER		GND CON		CLNC DEL	CPDLC
ARR 133.8	124.3 363.2	124.9 269.0	N 133.9 239.3	N 121.65 327.0	S 121.75 327.0	W 121.4 327.0	120.35 327.0	
DEP 135.65	124.5 235.975	128.5 360.7	S 120.95 379.1					
	(APCH FM WEST)	(090°-224°)						
	(225°-044°)	(045°-089°)						

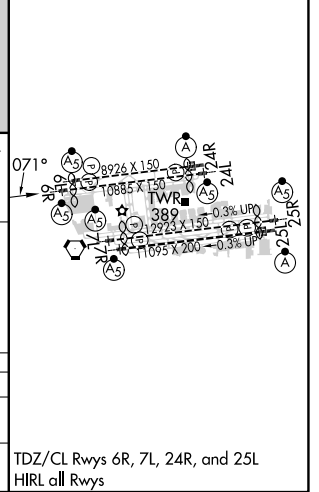


Procedure NA for arrivals at EXERT on V25 westbound and V27 northwest bound.



ELEV 128	D TDZE 116
----------	-------------------

<p>VGSI and RNAV glidepath not coincident (VGSI Angle 3.00/TCH 69).</p>				<p>3000</p> <p>↑</p> <p>tr 071°</p>	<p>ZIMLO</p> <p>✧</p> <p>tr 042°</p>	<p>AMTRA</p> <p>△</p>
<p>OTTES</p> <p>3600</p>	<p>071°</p>		<p>GUUPI</p> <p>1800</p>	<p>RW06R</p>		
<p>GP 3.00°</p> <p>TCH 53</p>	<p>6 NM</p>		<p>5.1 NM</p>			
CATEGORY	A	B	C	D		
RNP 0.30 DA	471/40		355 (400-¾)			
AUTHORIZATION REQUIRED						



SW-3, 23 MAR 2023 to 20 APR 2023

SW-3, 23 MAR 2023 to 20 APR 2023