

APP CRS	Rwy Idg	11134
251°	TDZE	104
	Apt Elev	128

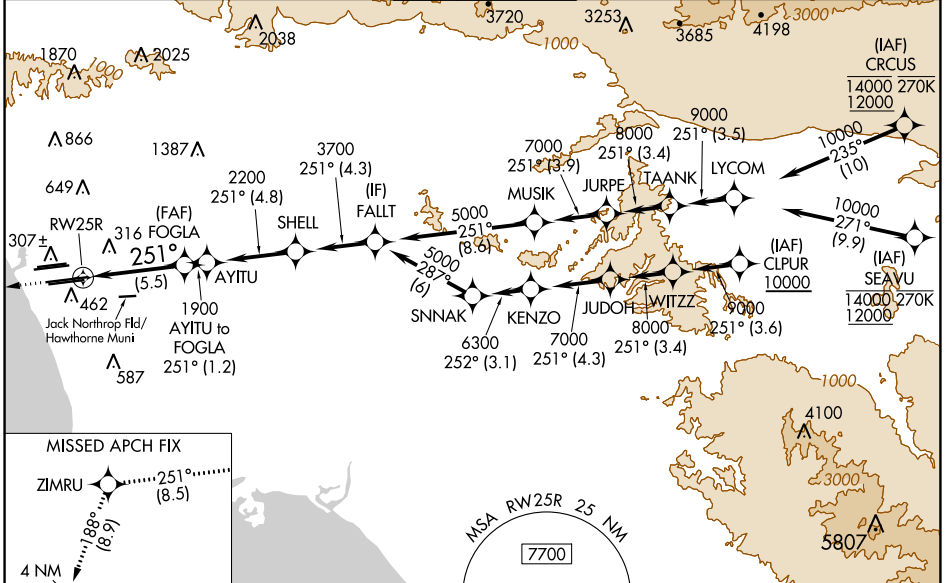
RNAV (RNP) Z RWY 25R

LOS ANGELES INTL (LAX)

For uncompensated Baro-VNAV systems, procedure NA below 5°C (41°F) or above 54°C (130°F). Simultaneous approach authorized. Simultaneous approach authorized with HHR. GPS required. For inop ALS, increase RNP 0.11 all Cats visibility to RVR 6000.

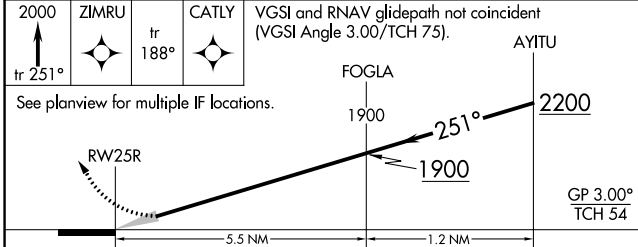
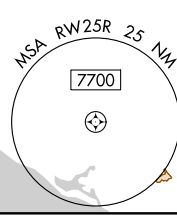
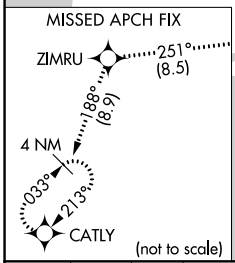
MALSR	MISSED APPROACH: Climb to 2000 on track 251° to ZIMRU and track 188° to CATLY and hold.
-------	---

D-ATIS	SOCAL APP CON		LOS ANGELES TOWER		GND CON		CLNC DEL	CPDLC
ARR 133.8	124.3 363.2 (APCH FM WEST)	124.9 269.0 (090°-224°)	N 133.9 239.3	S 120.95 379.1	N 121.65 327.0	S 121.75 327.0	120.35 327.0	
DEP 135.65	124.5 235.975 (225°-044°)	128.5 360.7 (045°-089°)			W 121.4 327.0			



SW-3, 23 MAR 2023 to 20 APR 2023

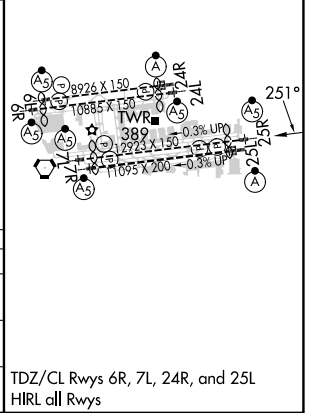
SW-3, 23 MAR 2023 to 20 APR 2023



ELEV 128	TDZE 104
----------	----------

CATEGORY	A	B	C	D
RNP 0.11 DA		453/40	349 (400-¾)	
RNP 0.30 DA		544/50	440 (500-1)	

AUTHORIZATION REQUIRED



TDZ/CL Rwy's 6R, 7L, 24R, and 25L
HIRL all Rwy's