

SW-3, 23 MAR 2023 to 20 APR 2023

TOP ALTITUDE:
FL230

TAKEOFF MINIMUMS

Rwys 6L/R, 7L/R: NA-AIC.

Rwys 24L/R, 25L/R: Standard with minimum climb of 500' per NM to 640.

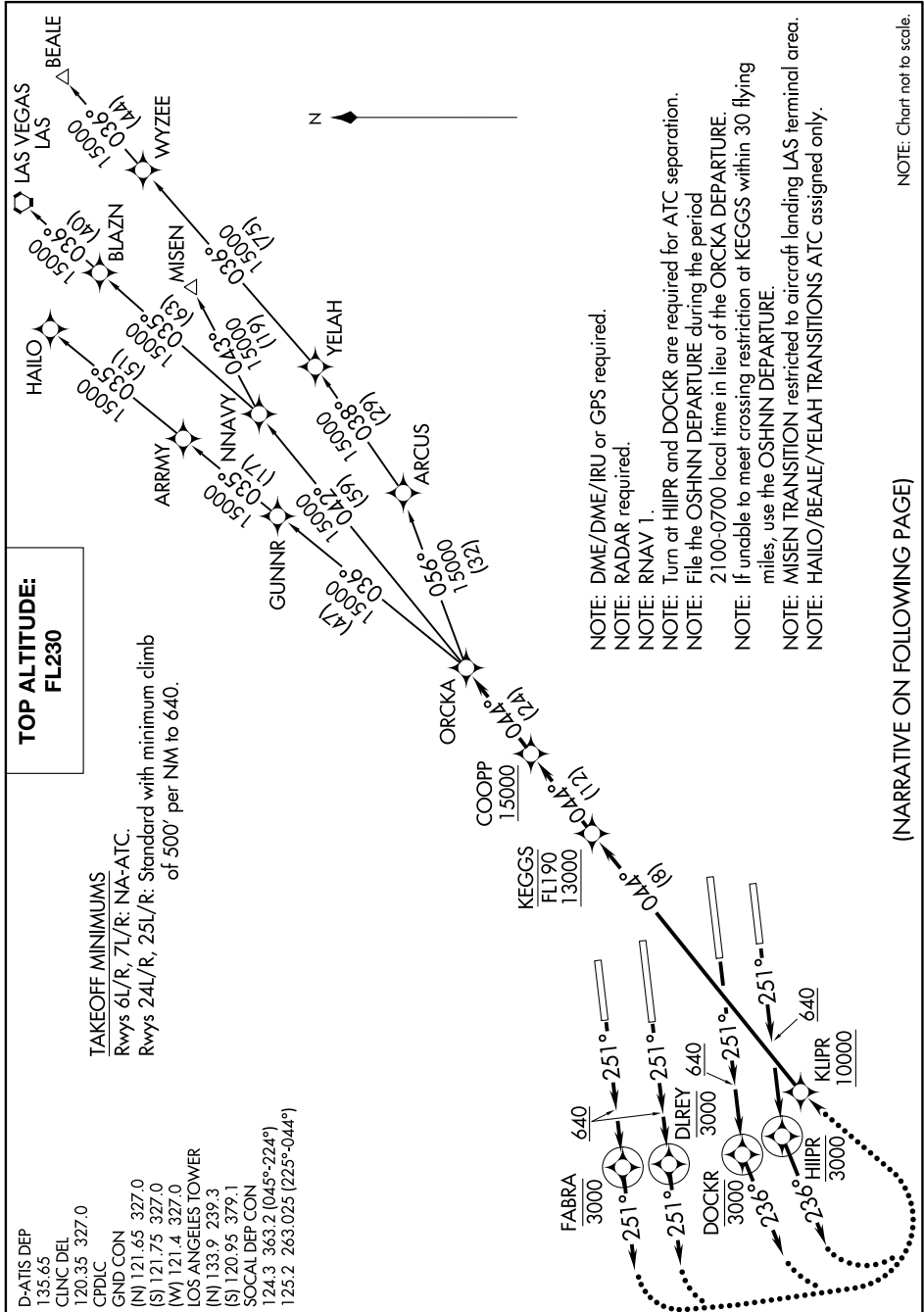
D-ATIS DEP
135.65
CUNCDL
120.35 327.0
CPDLC

GND CON
(N) 121.65 327.0
(S) 121.75 327.0
(W) 121.4 327.0

LOS ANGELES TOWER
(N) 133.9 239.3
(S) 120.95 379.1
SOCAL DEP CON
124.3 363.2 (045°-224°)
125.2 263.025 (225°-044°)

ORCKA FIVE DEPARTURE (RNAV)
(ORCA5.ORCKA) 10SEP20

LOS ANGELES, CALIFORNIA
LOS ANGELES INTL (LAX)



NOTE: DME/DME/IRU or GPS required.

NOTE: RADAR required.

NOTE: RNAV 1.

NOTE: Turn at HIIPR and DOCKR are required for ATC separation.

NOTE: File the OSHNN DEPARTURE during the period

2100-0700 local time in lieu of the ORCKA DEPARTURE.

NOTE: If unable to meet crossing restriction at KEGGS within 30 flying

miles, use the OSHNN DEPARTURE.

NOTE: MISEN TRANSITION restricted to aircraft landing LAS terminal area.

NOTE: HAILO/BEALE/YELAH TRANSITIONS ATC assigned only.

(NARRATIVE ON FOLLOWING PAGE)

NOTE: Chart not to scale.

SW-3, 23 MAR 2023 to 20 APR 2023