

LOC/DME I-LAX 109.9 Chan 36	APP CRS 251°	Rwy ldg 11095 TDZE 104 Apt Elev 128
--	------------------------	--

ILS RWY 25L (CAT II & III)

LOS ANGELES INTL (LAX)

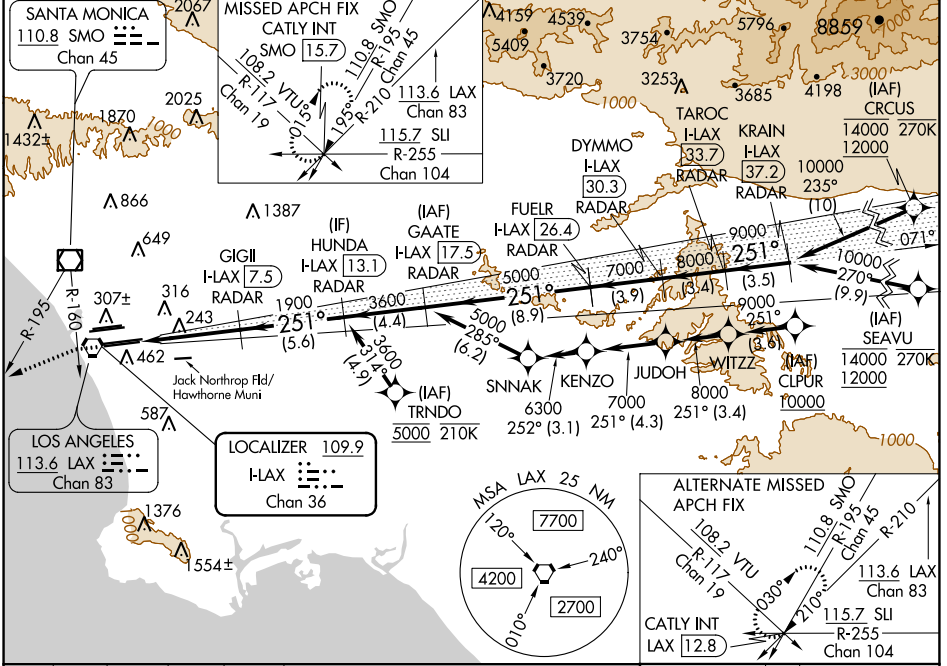
DME or RADAR required.
RNP APCH-GPS. From CLPUR or CRCUS or SEAVU or TRNDO.

ALSIF-2

MISSED APPROACH: Climb to 2000 on heading 251° until crossing the SMO R-160 then left turn on heading 236° and on the SMO R-195 to CATLY INT/SMO 15.7 DME and hold.

Simultaneous approach authorized.
Simultaneous approach authorized with HHR.

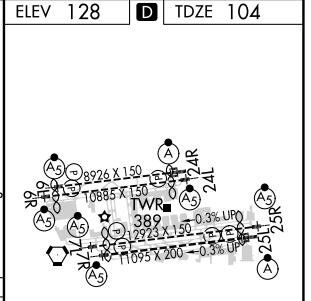
D-ATIS ARR 133.8 DEP 135.65	SOCAL APP CON 124.3 363.2 (APCH FM WEST) (225°-044°)	124.9 269.0 (090°-224°)	LOS ANGELES TOWER N 133.9 239.3 S 120.95 379.1	GND CON N 121.65 327.0 S 121.75 327.0 W 121.4 327.0	CLNC DEL 120.35 327.0	CPDLC
---	--	-----------------------------------	--	---	---	-------



SW-3, 23 MAR 2023 to 20 APR 2023

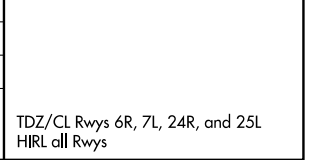
SW-3, 23 MAR 2023 to 20 APR 2023

2000 hdg 251°	SMO R-160 hdg 236°	SMO R-195	CATLY INT	TAROC I-LAX 33.7 RADAR	KRAIN I-LAX 37.2 RADAR	GAATE I-LAX 17.5 RADAR	FUELR I-LAX 26.4 RADAR	DYMMO I-LAX 30.3 RADAR	GIGII I-LAX 7.5 RADAR	HUNDA I-LAX 13.1 RADAR
				10000	9000	7000	8000	10000	1900	3600
				GS 3.00°	TCH 54	VGS1 and ILS glidepath not coincident (VGS1 Angle 3.00/TCH 70).				
1000'		5.5 NM	5.6 NM	4.4 NM	8.9 NM	3.9 NM	3.4 NM	3.5 NM		



CATEGORY	A	B	C	D
S-ILS 25L	CAT II RA 107/12 100 DA 204			
S-ILS 25L	CAT III RVR 06			

CATEGORY II & III ILS - SPECIAL AIRCREW & AIRCRAFT CERTIFICATION REQUIRED



TDZ/CL Rwyrs 6R, 7L, 24R, and 25L
HIRL all Rwyrs