

DIRBY ONE ARRIVAL (RNAV)

SW-3, 23 MAR 2023 to 20 APR 2023

ARRIVAL ROUTE DESCRIPTION

RDHOT TRANSITION (RDHOT.DIRBY1)

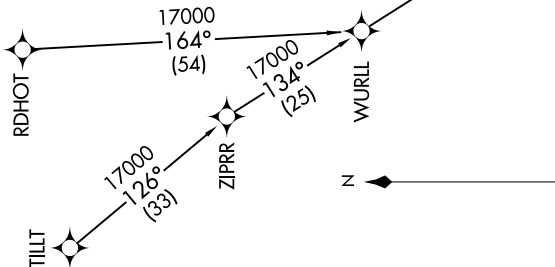
TILLT TRANSITION (TILLT.DIRBY1)

From DIRBY on track 082° to cross PHUNN at or below 14000, then on track 034° to cross SHHOW at or below 12000, then on track 346° to cross ZAPPP at or above 9000, then on track 346° to cross BUFILE at or below 8000, then on track 332° to cross SLI VORTAC at 7000 and at 210K, then on track 326° to cross TRNDO at 5000 and at 210K. Expect RADAR vectors to ILS or RNAV (RNP) Z RWY 25L final approach course.

LOST COMMUNICATIONS

In the event of lost communications: RNP arrivals proceed on the RNAV (RNP) Z RWY 25L approach. All other aircraft proceed on the ILS or LOC RWY 25L.

D-ATIS ARR 133.8
SOCAL APP CON 127.4, 387.025
LOS ANGELES TOWER 133.9, 239.3 (N)
120.95, 379.1 (S)



NOTE: RADAR required.

NOTE: RNAV 1.

NOTE: DME/DME/IRU or GPS required.

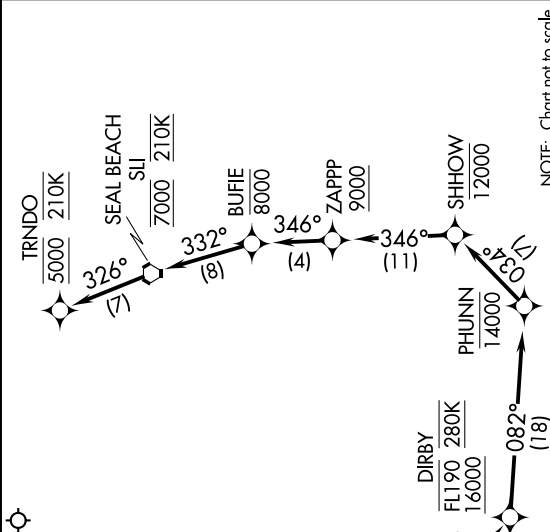
NOTE: Turbojet aircraft only.

NOTE: ATC assigned only, do not file.

NOTE: Expect runway 25L unless otherwise assigned by ATC.

NOTE: Non RNP AR aircraft expect RADAR vector to final approach course after SLI VORTAC.

DIRBY ONE ARRIVAL (RNAV)



NOTE: Chart not to scale.

SW-3, 23 MAR 2023 to 20 APR 2023