

LAS VEGAS, NEVADA

HI-ILS or LOC Z RWY 21L

LOC I-DIQ 109.1	APCH CRS 209°	Rwy ldg 21L	10,051	21R	10,120
		TDZE	1865		1869
		Arprt Elev	1869		

AL-227 (USAF)

NELLIS AFB (KLSV)

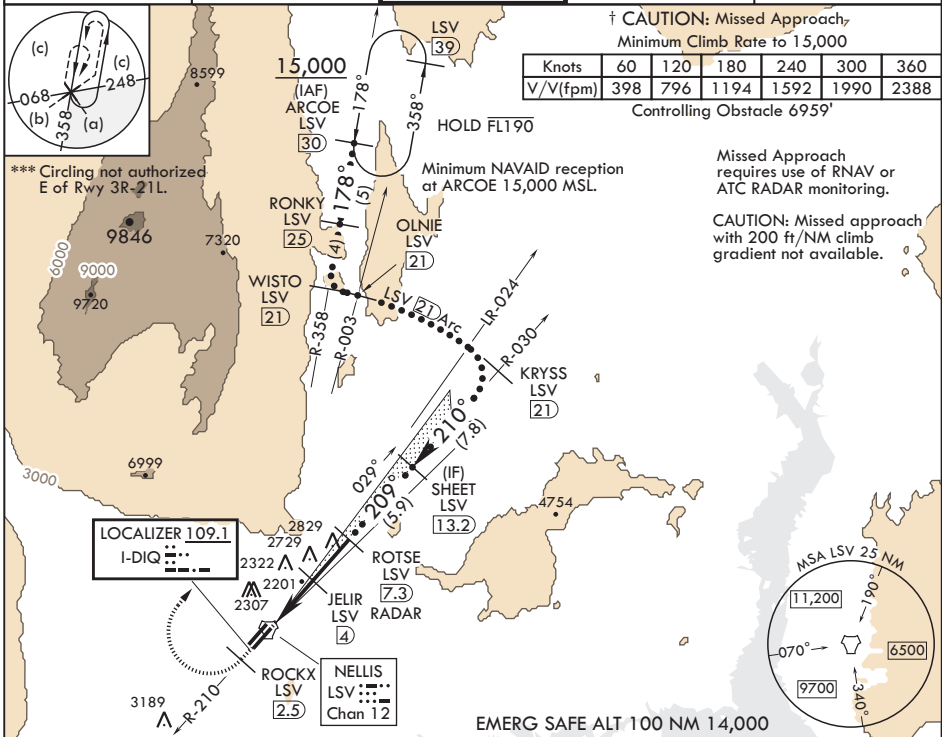
DME or RADAR required.

⚠ * When ALS inop, increase RVR to 40, vis to 3/4 mile.
** When ALS inop, increase vis to 1 3/4 miles.



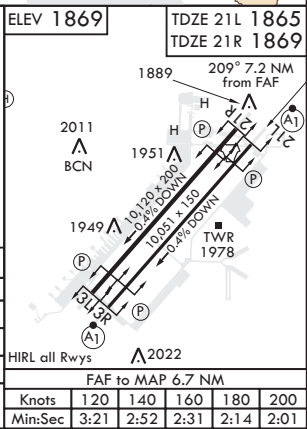
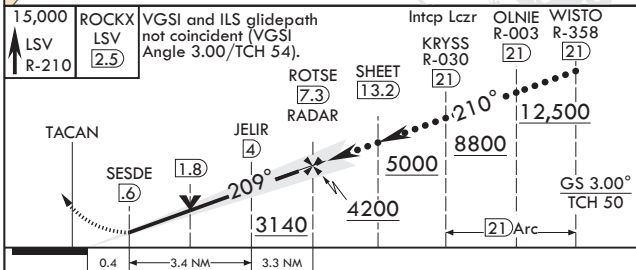
† MISSED APPROACH: Climb to 15,000, intercept LSV TACAN R-210 to 2.5 DME (ROCKX), then climbing right turn heading 028° to join LSV R-358 to ARCOE and hold, continue climb in hold to 15,000. Missed approach not for civil use.

ATIS 270.1	APP CON 124.95 273.55	TOWER 132.55 327.0	GND CON 121.8 275.8	CLNC DEL 120.9 289.4
----------------------	---------------------------------	------------------------------	-------------------------------	--------------------------------



SW-4, 23 MAR 2023 to 20 APR 2023

SW-4, 23 MAR 2023 to 20 APR 2023



CATEGORY	C	D	E
S-ILS 21L*	2065/24	200	(200-1/2)
S-LOC 21L**	2460-1 1/4	595	(600-1 1/4)
SIDESTEP 21R	2500-1 1/4	631	(700-1 1/4)
⚠ CIRCLING***	2620-2 1/4 751 (800-2 1/4)	2840-3 971 (1000-3)	3040-3 1171 (1200-3)

LAS VEGAS, NEVADA
Amdt 9 22APR21

36°14'N - 115°02'W

NELLIS AFB (KLSV)

HI-ILS or LOC Z RWY 21L