

# NDB RWY 24

LAKEHURST MAXFIELD FLD,  
(JOINT BASE MC GUIRE DIX LAKEHURST) (KNEL)

NDB NEL <b>396</b>	APCH CRS <b>241°</b>	Rwy Ldg TDZE Arpt Elev <b>5002</b> <b>101</b> <b>101</b>
-----------------------	-------------------------	---

AL-223 [USN]

(JOINT BASE MC GUIRE DIX LAKEHURST) (KNEL)

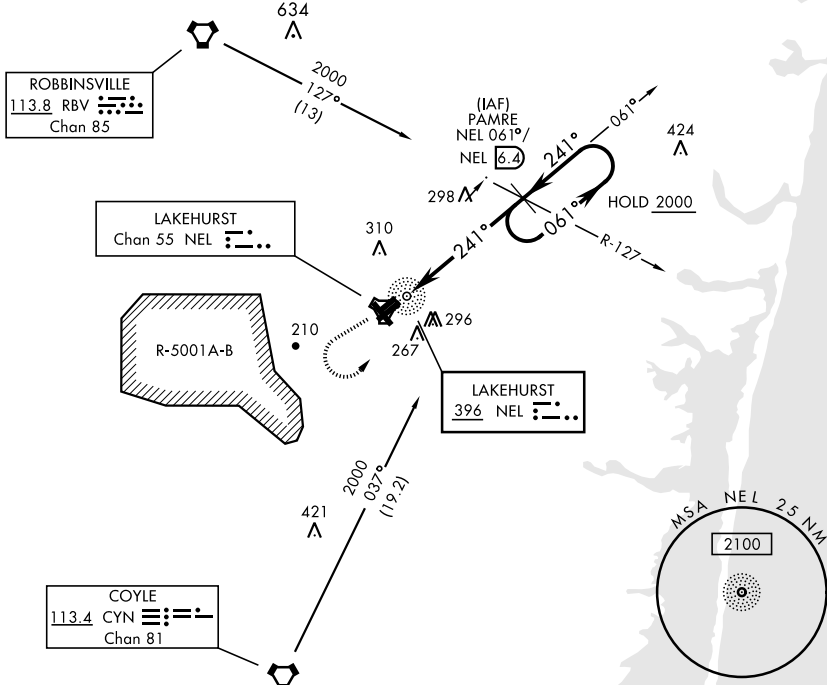
▼ \* When ALS inop, increase, CAT AB vis to 1 mile, CAT CD vis to 1¼ miles.



MISSED APPROACH: Climb to 800, then climbing left turn to 2000 to intercept NEL NDB 061° bearing to PAMRE and hold.

ATIS ★ <b>276.525</b>	MC GUIRE APP CON <b>126.475 363.8</b>	TOWER ★ <b>127.775 360.2</b>	GND CON <b>118.375 307.375</b>
--------------------------	--	---------------------------------	-----------------------------------

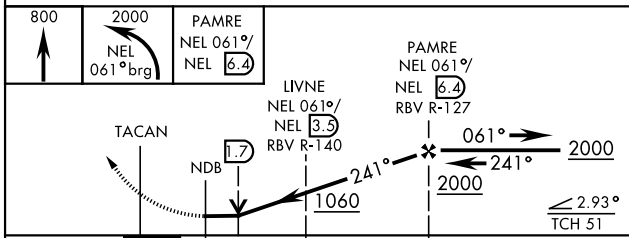
DME source NEL TACAN Chan 55



NE-2, 23 MAR 2023 to 20 APR 2023

NE-2, 23 MAR 2023 to 20 APR 2023

EMERG SAFE ALT 100 NM 4100



ELEV 101	TDZE 101
----------	----------

HIRL Rwy 6-24	MIRL Rwy 063°-243°				
FAF to MAP 5.5 NM					
Knots	60	90	120	150	180
Min:Sec	5:30	3:40	2:45	2:12	1:50

CATEGORY	A	B	C	D
S-24 *	540-¾	439	(500-¾)	
CIRCLING	640-1 539 (600-1)	720-1 619 (700-1)	720-1¼ 619 (700-1¾)	720-2 619 (700-2)

# NDB RWY 24