

APP CRS	Rwy Idg	11200
050°	TDZE	747
	Apt Elev	796

RNAV (RNP) Z RWY 5L

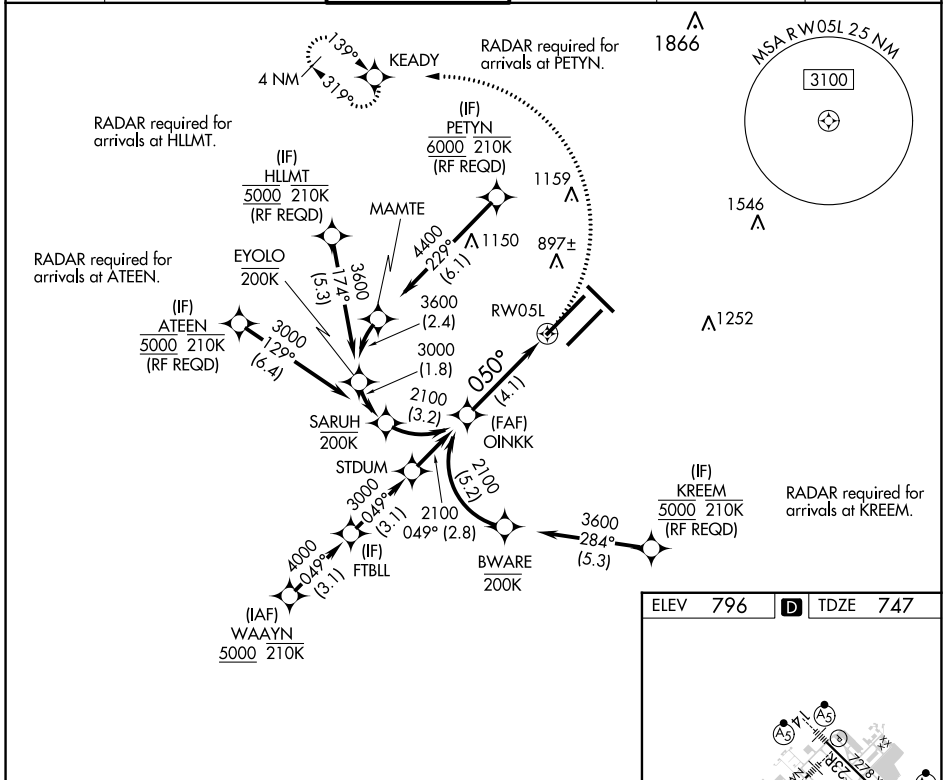
INDIANAPOLIS INTL (IND)

▼ For uncompensated Baro-VNAV systems, procedure NA below -18°C (0°F) or above 54°C (130°F). GPS required. For inop ALS, increase RNP 0.30 all Cats visibility to 1½ SM. Simultaneous approach authorized.

ALSF-2

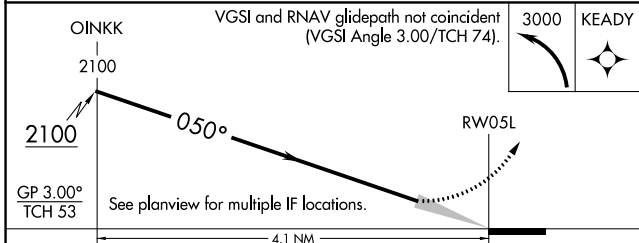
MISSED APPROACH: Climbing left turn to 3000 direct KEADY and hold.

D-ATIS	INDIANAPOLIS APP CON	INDY TOWER	GND CON	CLNC DEL	CPDLC
134.25	128.175 317.8	120.9 257.8	121.9	128.75 257.8	

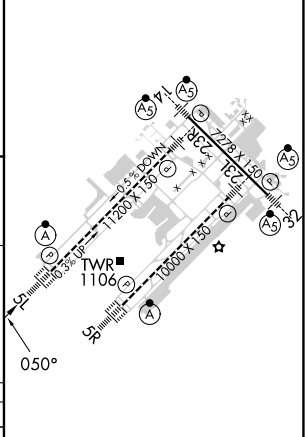


EC-2, 23 MAR 2023 to 20 APR 2023

EC-2, 23 MAR 2023 to 20 APR 2023



ELEV	796	D	TDZE	747
------	------------	----------	------	------------



CATEGORY	A	B	C	D
RNP 0.30 DA		1197/60	450 (500-1½)	

AUTHORIZATION REQUIRED

HIRL all Rwys
TDZ/CL Rwys 5L and 5R