

(ROCKY1.ROCKY) 18032
ROCKY ONE DEPARTURE

AL-203 (FAA)

INDIANAPOLIS INTL (IND)
 INDIANAPOLIS, INDIANA

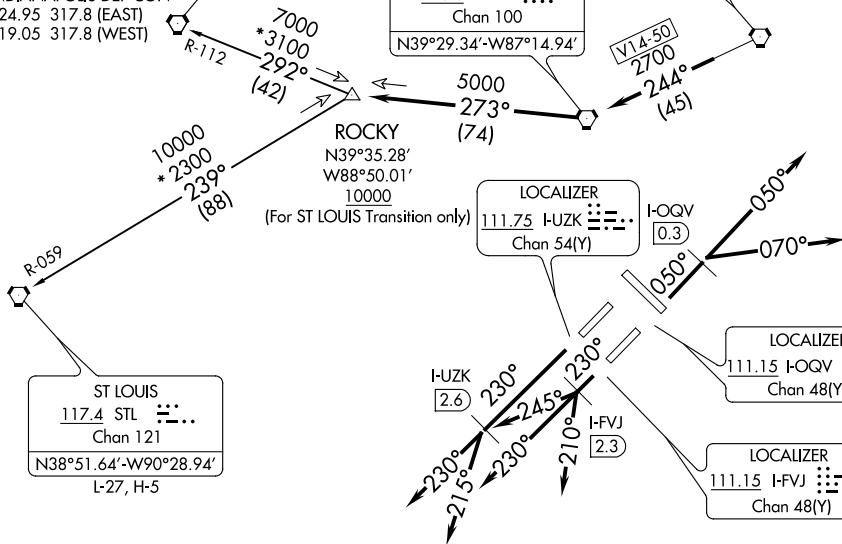
D-ATIS
 134.25
 CLNC DEL
 128.75 257.8
 CPDLC
 GND CON
 121.9
 INDY TOWER
 120.9 257.8
 INDIANAPOLIS DEP CON
 124.95 317.8 (EAST)
 119.05 317.8 (WEST)

SPINNER
 112.7 SPI
 Chan 74
 N39°50.38'-W89°40.66'
 L-27, H-5

TERRE HAUTE
 115.3 TTH
 Chan 100
 N39°29.34'-W87°14.94'

BRICKYARD
 116.3 VHP
 Chan 110

TOP ALTITUDE:
(JETS) 5000
(PROPS) 3000

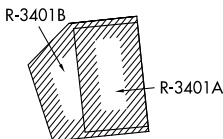


ST LOUIS
 117.4 STL
 Chan 121
 N38°51.64'-W90°28.94'
 L-27, H-5

LOCALIZER
 111.75 I-UZK
 Chan 54(Y)
 I-OQV 0.3

LOCALIZER
 111.15 I-OQV
 Chan 48(Y)

LOCALIZER
 111.15 I-FVJ
 Chan 48(Y)



TAKEOFF MINIMUMS

Rwys 5L/R, 14, 23L/R, 32: Standard.

NOTE: RADAR required.

NOTE: Select appropriate localizer/DME frequency/channel prior to departure.

NOTE: Turbojets accelerate to 250K until reaching 10000, if unable advise ATC.

NOTE: Assigned to aircraft with a requested altitude of 11000 or above.

(NARRATIVE ON FOLLOWING PAGE)

NOTE: Chart not to scale.

(ROCKY1.ROCKY) 01FEB18
ROCKY ONE DEPARTURE

INDIANAPOLIS, INDIANA
 INDIANAPOLIS INTL (IND)

EC-2, 23 MAR 2023 to 20 APR 2023

EC-2, 23 MAR 2023 to 20 APR 2023