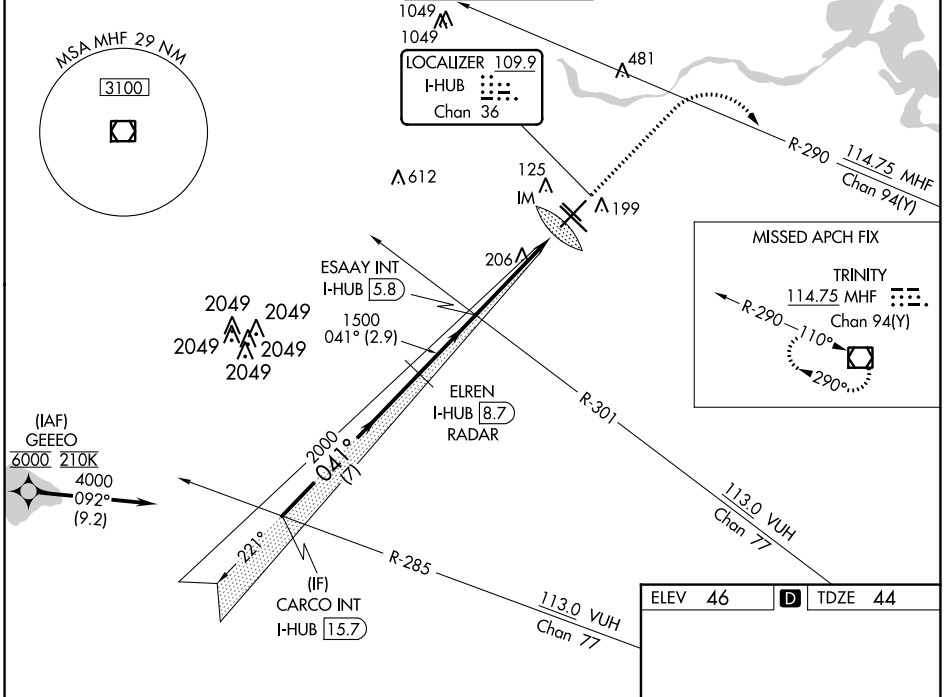


LOC/DME I-HUB <b>109.9</b> Chan <b>36</b>	APP CRS <b>041°</b>	Rwy Idg <b>7602</b> TDZE <b>44</b> Apt Elev <b>46</b>
---	------------------------	---

# ILS RWY 4 (SA CAT I)

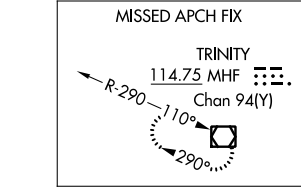
WILLIAM P HOBBY (HOU)

Aircraft not GPS equipped - RADAR required for procedure entry. From GEEEO: RNAV 1- GPS required.		ALSF-2 	MISSED APPROACH: Climb to 1500 then climbing right turn to 3000 on MHF VOR/DME R-290 to MHF VOR/DME and hold.		
Requires specific OPSPEC, MSPEC, or LOA approval and use of HUD to DH.					
D-ATIS <b>124.6</b>	HOUSTON APP CON <b>120.05 379.1</b> EAST <b>124.35 316.15</b> WEST	HOBBY TOWER <b>118.7 256.9</b>	GND CON <b>121.9</b>	CLNC DEL <b>125.45</b>	CPDLC

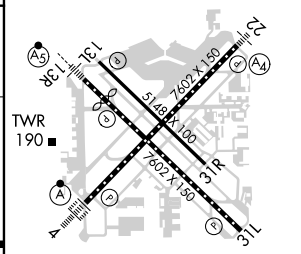
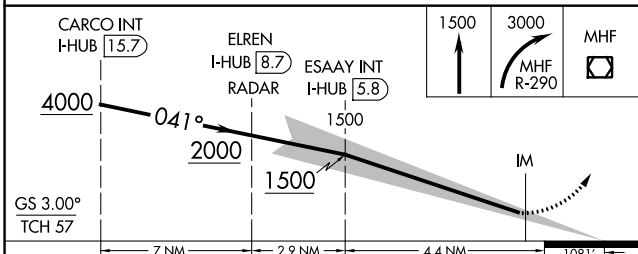


SC-5, 23 MAR 2023 to 20 APR 2023

SC-5, 23 MAR 2023 to 20 APR 2023



ELEV 46	<b>D</b> TDZE 44
---------	------------------



CATEGORY	A	B	C	D
S-ILS 4	RA 146/14		150 DA 194	

## SA CATEGORY I ILS - SPECIAL AIRCREW & AIRCRAFT CERTIFICATION REQUIRED

REIL Rwy 31L  
 MRL Rwy 13L-31R  
 HIRL Rws 4-22 and 13R-31L  
 TDZ/CL Rws 4, 13R and 31L