

WAAS CH <b>48820</b> <b>W35A</b>	APP CRS <b>352°</b>	Rwy Idg TDZE Apt Elev	<b>6002</b> <b>917</b> <b>930</b>
--	------------------------	-----------------------------	---

# RNAV (GPS) RWY 35R

SOUTH TEXAS RGNL AT HONDO (HDO)

RNP APCH.

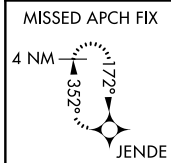
Baro-VNAV NA when using Castroville altimeter setting. For uncompensated Baro-VNAV systems, LNAV/VNAV NA below -16°C (4°F) or above 47°C (116°F). Visibility reduction by helicopters NA. When local altimeter setting not received, use Castroville altimeter setting and increase all DA 62 feet and all MDA 80 feet, increase LNAV/VNAV all Cats, and LNAV and Circling Cats C and D visibility ¼ mile. Circling Rwy 8, 13, 17R, 26, 31, 35L NA at night.

MISSED APPROACH:  
Climb to 3700 direct  
JENDE and hold.

ASOS  
**119.675**

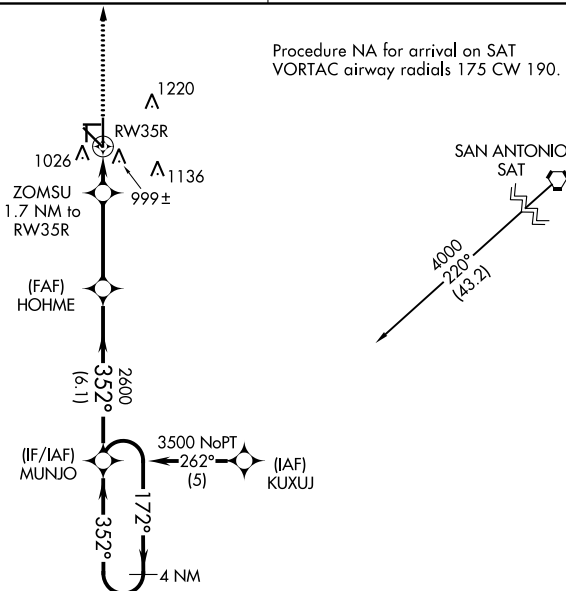
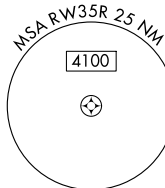
HOUSTON CENTER  
**134.95 269.4**

UNICOM  
**122.725 (CTAF)**



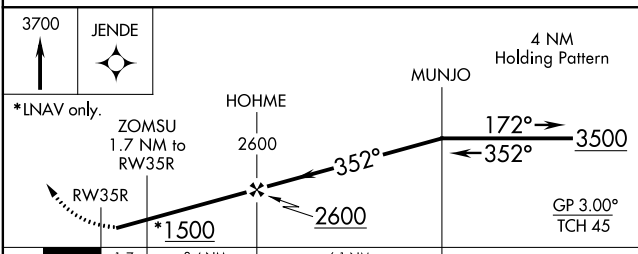
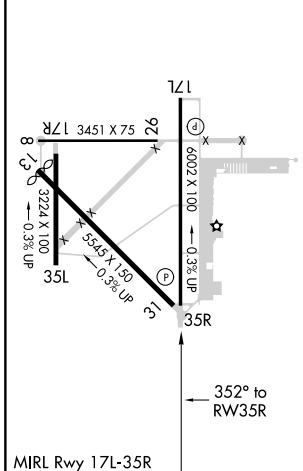
△  
1448

Procedure NA for arrival on SAT  
VORTAC airway radials 175 CW 190.



SC-3, 23 MAR 2023 to 20 APR 2023

ELEV 930	TDZE 917
----------	----------



CATEGORY	A	B	C	D
LPV DA	1170-1		253 (300-1)	
LNAV/VNAV DA	1293-1¼		376 (400-1¼)	
LNAV MDA	1360-1	443 (500-1)	1360-1¼ 443 (500-1¼)	1360-1½ 443 (500-1½)
CIRCLING	1440-1 510 (600-1)	1520-1 590 (600-1)	1580-1¾ 650 (700-1¾)	1580-2 650 (700-2)