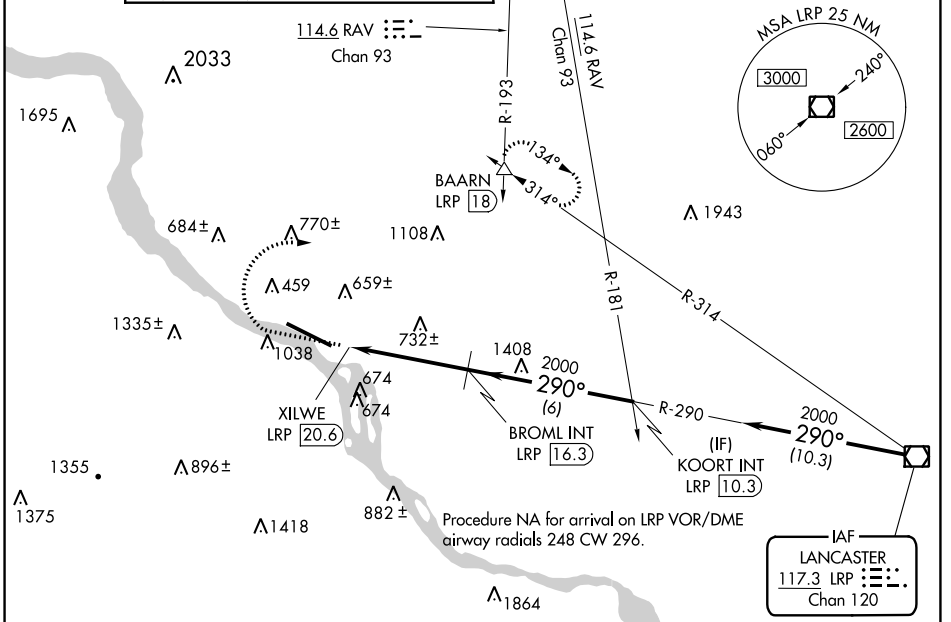


VOR/DME LRP 117.3 Chan 120	APP CRS 290°	Rwy Idg TDZE 308 Apt Elev 310
--	------------------------	---

VOR RWY 31

HARRISBURG INTL (MDT)

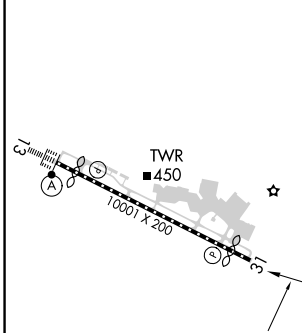
V A 3 -17°C	Circling NA south of Rwy 13-31. Rwy 31 helicopter visibility reduction below 3/4 SM NA.	MISSED APPROACH: Climb to 1500 then climbing right turn to 3000 on heading 090° and RAV VORTAC R-193 to BAARN INT/LRP 18 DME and hold.	
ATIS 118.8	HARRISBURG APP CON (080°-179°) 126.45 281.525 (180°-309°) 124.1 273.525 (310°-079°) 118.25 269.45	HARRISBURG INTL TOWER 124.8 269.35	GND CON 121.7 348.6



NE-4, 23 MAR 2023 to 20 APR 2023

NE-4, 23 MAR 2023 to 20 APR 2023

ELEV 310	D	TDZE 308
----------	----------	----------



FAF to MAP 4.3 NM					
Knots	60	90	120	150	180
Min:Sec	4:18	2:52	2:09	1:43	1:26

1500	3000	RAV R-193	BAARN	BROML INT LRP (16.3)	KOORT INT LRP (10.3)
↑	hdg 090°		△		
XILWE LRP (20.6)		2000		290°	
≤ 3.00° TCH 51					
0.9		4.3 NM		6 NM	
CATEGORY	A	B	C	D	
S-31	1260-1 1/4 952 (1000-1 1/4)	1260-1 1/2 952 (1000-1 1/2)	1260-3	952 (1000-3)	
CIRCLING	1260-1 1/4 950 (1000-1 1/4)	1260-1 1/2 950 (1000-1 1/2)	1260-3 950 (1000-3)	1440-3 1130 (1200-3)	